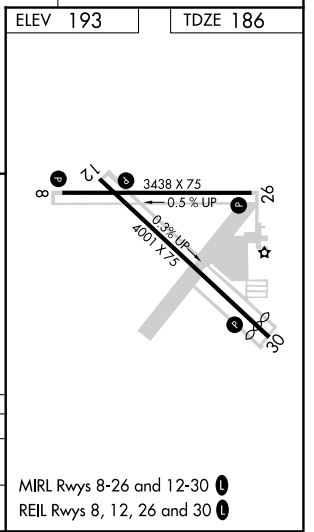
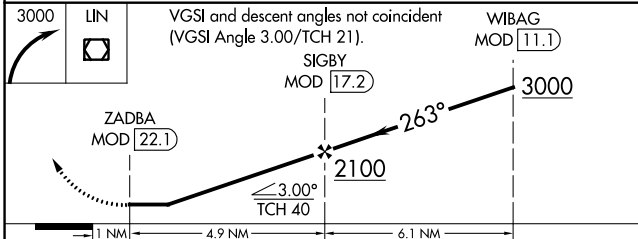
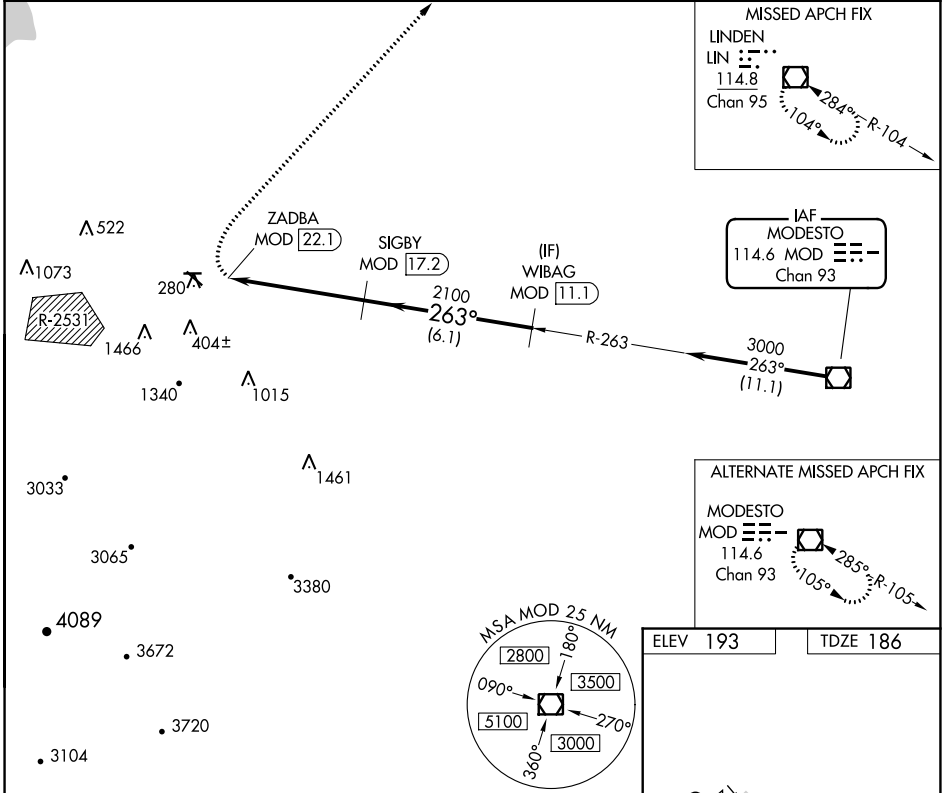


VOR/DME MOD <b>114.6</b> Chan <b>93</b>	APP CRS <b>263°</b>	Rwy Idg TDZE <b>186</b> Apt Elev <b>193</b>	<b>3438</b>
---	------------------------	---	-------------

# VOR RWY 26

TRACY MUNI (TCY)

DME required.		MISSED APPROACH: Climbing right turn to 3000 direct LIN VOR/DME and hold.
AWOS-3 <b>118.375</b>	NORCAL APP CON <b>123.85 278.3</b>	UNICOM <b>123.075 (CTAF) 0</b>



CATEGORY	A	B	C	D
S-26	760-1¼	574 (600-1¼)	760-1⅝ 574 (600-1⅝)	NA
<b>C</b> CIRCLING	760-1¼	567 (600-1¼)	760-1⅝ 567 (600-1⅝)	NA

SW-2, 25 FEB 2021 to 25 MAR 2021

SW-2, 25 FEB 2021 to 25 MAR 2021