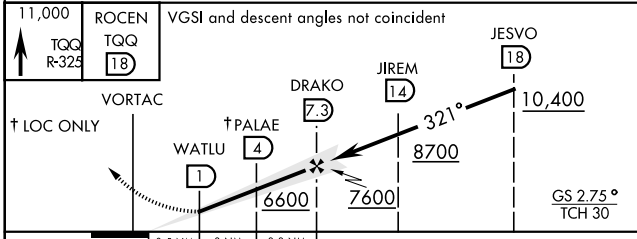
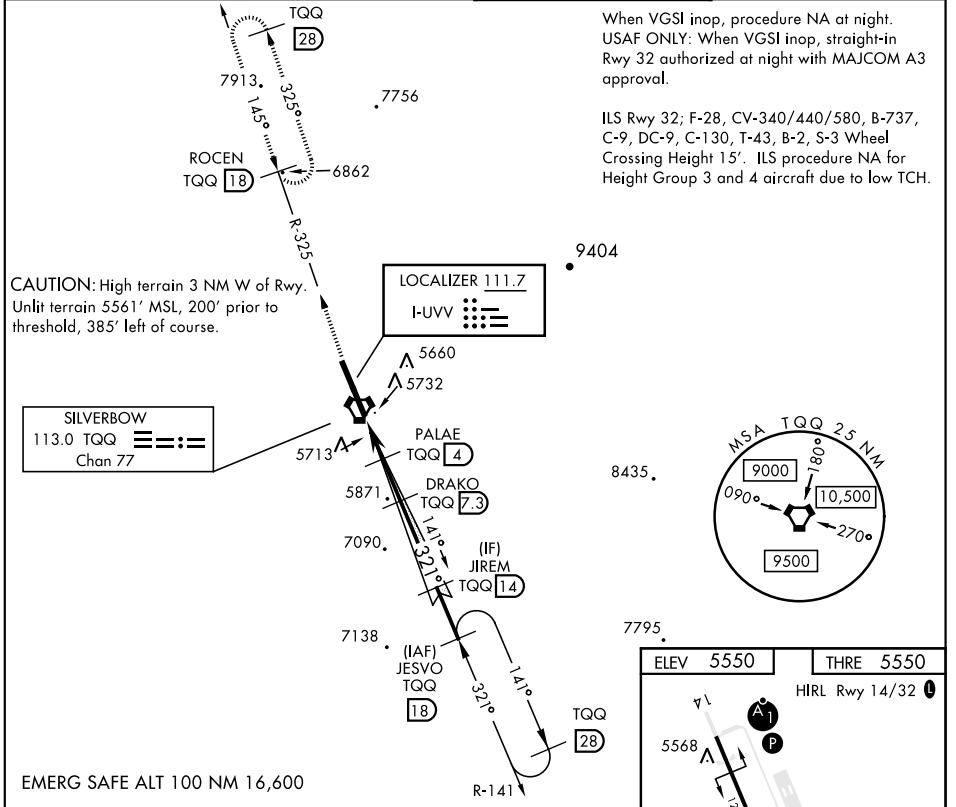


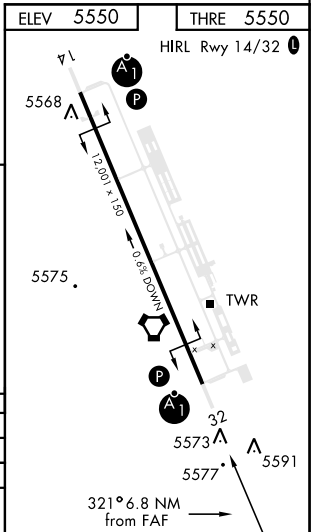
ILS or LOC/DME RWY 32

LOC I-UVV 111.7	APCH CRS 321°	Rwy Idg 12,001	THRE 5550	Arprt Elev 5550	AL-3188 [USAF]	TONOPAH TEST RANGE (KTNX)
* When ALS inop, increase CAT CDE vis to 1/4 miles. ** Circling NA West of Rwy 14/32					ALSF-1 	MISSED APPROACH: Climb to 11,000 via TQQ VORTAC R-325 to ROCEN and hold, continue climb in hold to 11,000.

AWOS 113.0	NELLIS CONTROL 119.35 254.4	SILVERBOW TOWER ★ 124.75 257.95 0	GND CON 127.25 335.5
----------------------	---------------------------------------	---	--------------------------------



	A	B	C	D	E
S-ILS 32		5800-1	250 (300-1)		
S-LOC 32*		5980-1	430 (500-1)		
CIRCLING**	6040-1 490 (500-1)	6040-1 1/2 490 (500-1/2)	6100-2 550 (600-2)		



ILS or LOC/DME RWY 32

SW-4, 25 FEB 2021 to 25 MAR 2021

SW-4, 25 FEB 2021 to 25 MAR 2021