

TONOPAH, NEVADA

RNAV (GPS) RWY 14

APCH CRS 141°	Rwy ldg 12,001' TDZE 5496' Arprt Elev 5550'
-------------------------	--

AL-3188 [USAF]

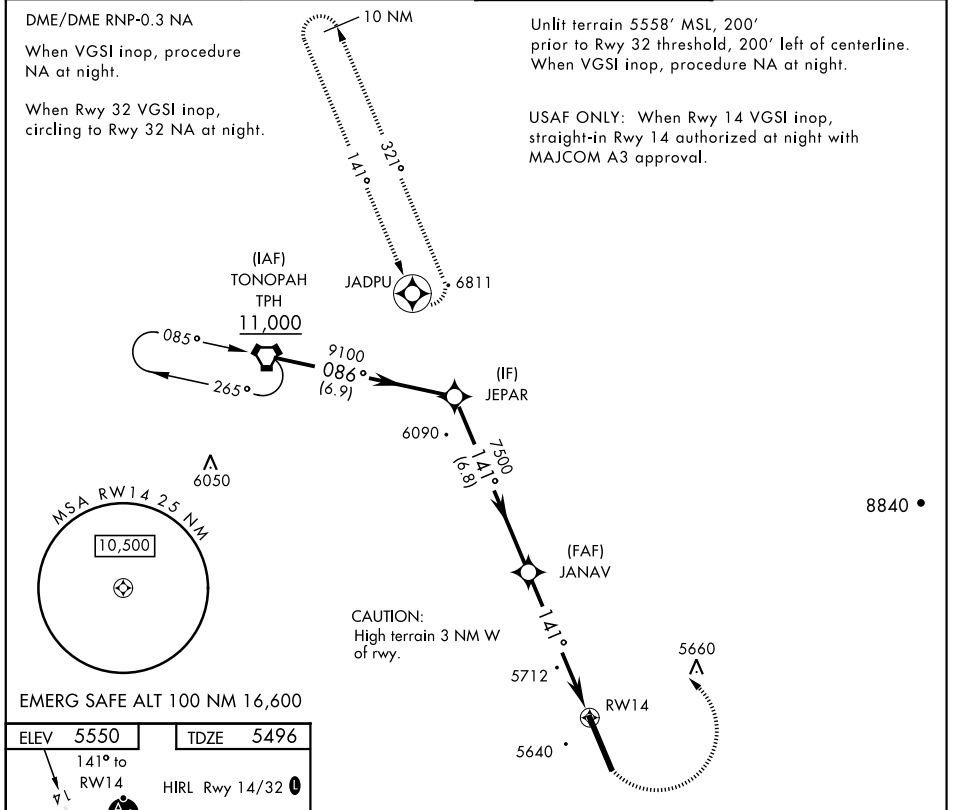
TONOPAH TEST RANGE (KTNX)

▼ * When ALS inop, increase CAT AB RVR to 55, vis to 1 mile, CAT CD vis to 1 3/8 miles.
 ** Circling not authorized West of Rwy 14/32.

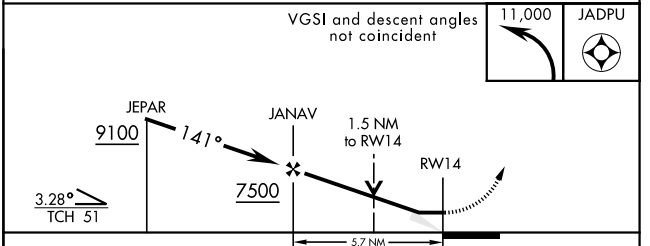
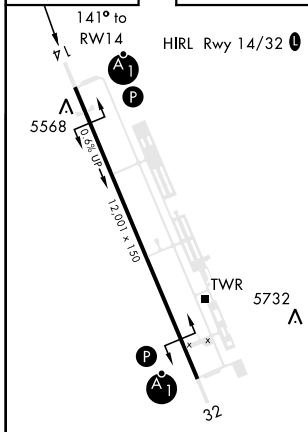


MISSED APPROACH: Turn left climbing to 11,000 direct JADPU and hold, continue climb-in-hold to 11,000.

AWOS 113.0	NELLIS CONTROL 119.35 254.4	SILVERBOW TOWER ★ 124.75 257.95 0	GND CON 127.25 335.5
-----------------------------	--	--	---------------------------------------



ELEV 5550 TDZE 5496



CATEGORY	A	B	C	D
LNVA MDA *	5960/24 464 (500-1/2)	5960/50 464 (500-1)		
C CIRCLING **	6040-1 490 (500-1)	6040-1 1/2 490 (500-1 1/2)	6100-2 550 (600-2)	

TONOPAH, NEVADA
Amdt 4 29MAR18

37°47'N-116°47'W

TONOPAH TEST RANGE (KTNX)

RNAV (GPS) RWY 14

SW-4, 25 FEB 2021 to 25 MAR 2021

SW-4, 25 FEB 2021 to 25 MAR 2021