

VOR/DME or TACAN RWY 14

VORTAC TQQ 113.0 Chan 77	APCH CRS 145°	Rwy Ldg THRE 12,001 5473 Arprt Elev 5550
--	-------------------------	---

AL-3188 [USAF]

TONOPAH TEST RANGE (KTNX)

▼ * When ALS inop, increase CAT AB vis to 1 mile, CAT CDE vis to 1 3/8 miles.
** Circling not authorized West of Rwy 32.



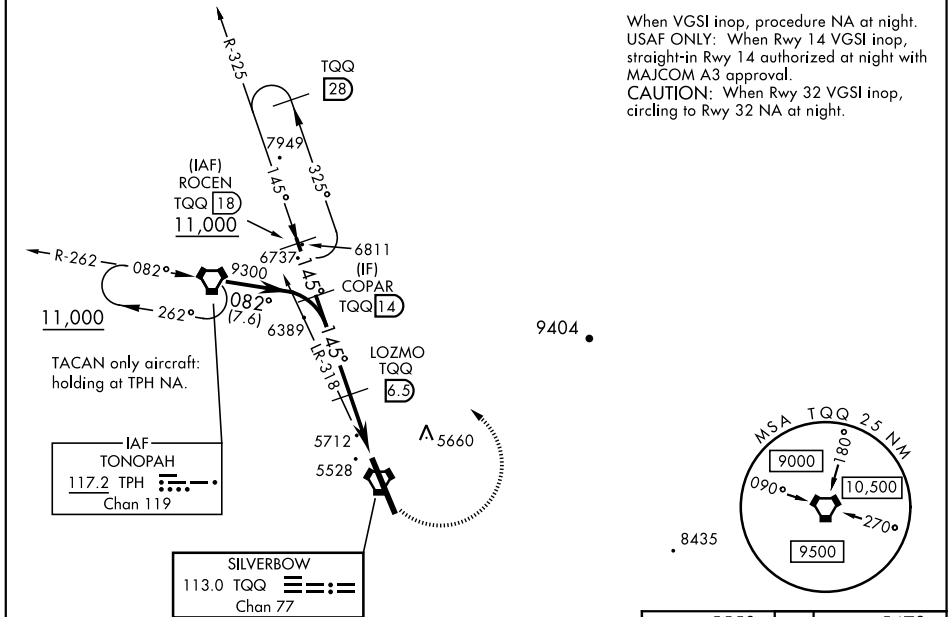
MISSED APPROACH: Turn left climbing to 11,000 via TQQ R-325 to ROCEN and hold, continue climb-in-hold to 11,000.

AWOS 113.0	NELLIS CONTROL 119.35 254.4	SILVERBOW TOWER ★ 124.75 257.95 0	GND CON 17.25 335.5
----------------------	---------------------------------------	---	-------------------------------

CAUTION: High terrain 3 NM W of Rwy. Unlit terrain 5558' MSL, 200' prior to Rwy 32 threshold, 200' left of centerline.

When VGSi inop, procedure NA at night. USAF ONLY: When Rwy 14 VGSi inop, straight-in Rwy 14 authorized at night with MAJCOM A3 approval.

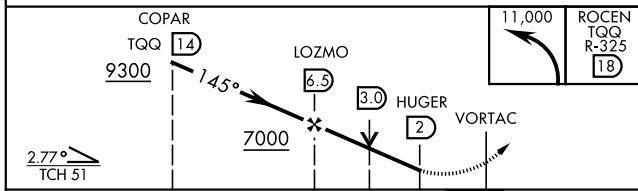
CAUTION: When Rwy 32 VGSi inop, circling to Rwy 32 NA at night.



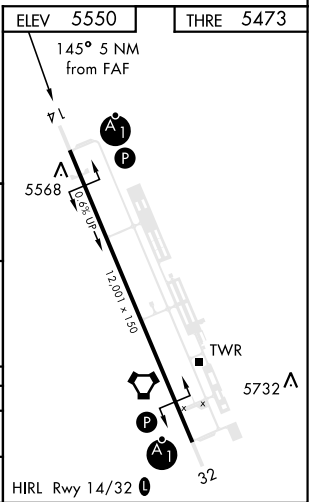
SW-4, 25 FEB 2021 to 25 MAR 2021

SW-4, 25 FEB 2021 to 25 MAR 2021

EMERG SAFE ALT 100 NM 16,600



CATEGORY	A	B	C	D	E
S-14 *	5980-1/2 507 (500-1/2)		5980-1	507 (500-1)	
☑ CIRCLING **	6040-1 490 (500-1)		6040-1 1/2 490 (500-1 1/2)	6100-2 550 (600-2)	



VOR/DME or TACAN RWY 14