

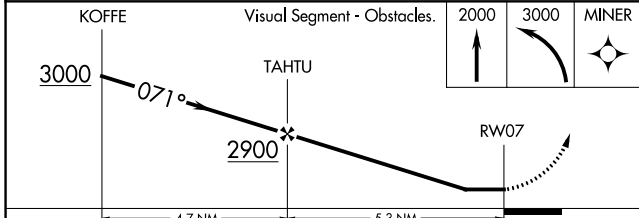
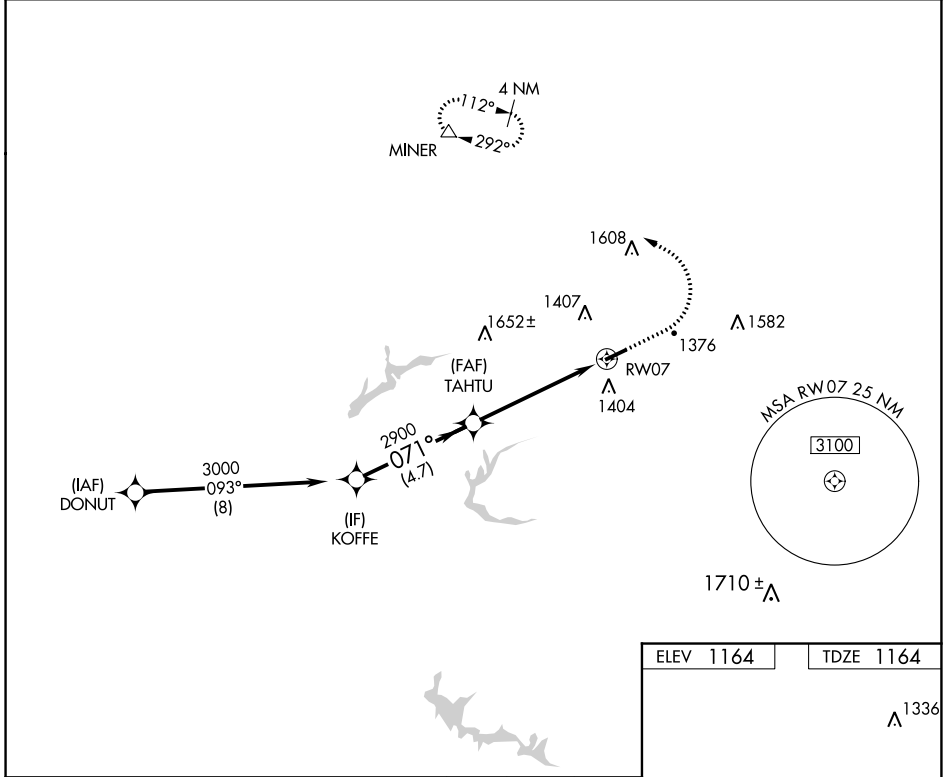
WAAS CH <b>62930</b> <b>W07A</b>	APP CRS <b>071°</b>	Rwy Idg TDZE Apt Elev	<b>4300</b> <b>1164</b> <b>1164</b>
--	------------------------	-----------------------------	---

# RNAV (GPS) RWY 7

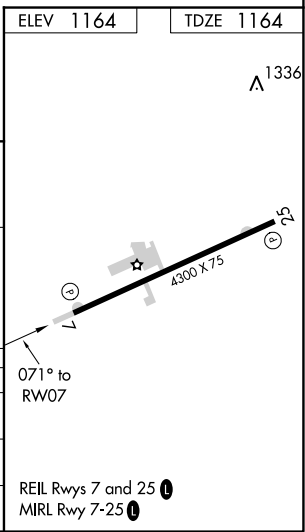
CARROLL COUNTY-TOLSON (T'SO)

RNP APCH.	Procedure NA at night. Use Akron-Canton Rgnl altimeter setting; when not received use New Philadelphia altimeter and increase all MDA 20 feet. Rwy 7 helicopter visibility reduction below 1 SM NA.	MISSED APPROACH: Climb to 2000 then climbing left turn to 3000 direct MINER and hold.
-----------	---	---

CLEVELAND APP CON★ <b>125.5 371.875</b>	UNICOM <b>122.7 (CTAF) 0</b>
--	---------------------------------



CATEGORY	4.7 NM		5.3 NM	
	A	B	C	D
LP MDA	1760-1	596 (600-1)	NA	
LNAV MDA	1820-1	656 (700-1)	NA	
<b>C</b> CIRCLING	1840-1	676 (700-1)	NA	



EC-2, 25 FEB 2021 to 25 MAR 2021

EC-2, 25 FEB 2021 to 25 MAR 2021