

WAAS CH 45605 W23A	APP CRS 229°	Rwy Idg TDZE Apt Elev	3995 1027 1070
--	------------------------	-----------------------------	---

RNAV (GPS) RWY 23

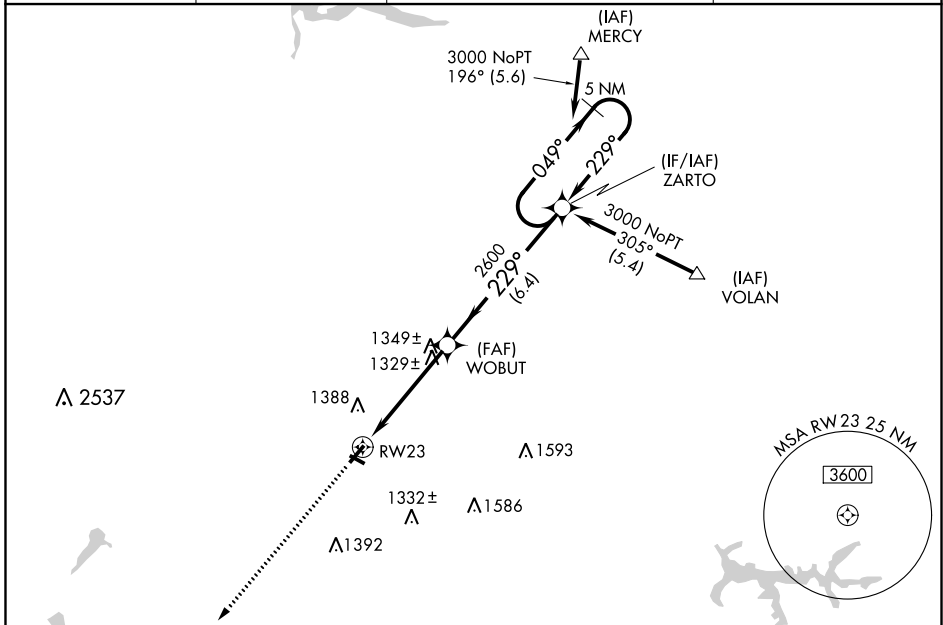
NEW CASTLE MUNI (UCP)

RNP APCH.

▽ VDP NA when using Youngstown-Warren Rgnl altimeter setting. When local altimeter setting not received, use Youngstown-Warren Rgnl altimeter setting and increase all DA 61 feet and all MDA 80 feet; increase LNAV Cat C and Circling Cat C visibility ¼ SM.

MISSED APPROACH:
Climb to 3600 direct
FIVEG and hold.

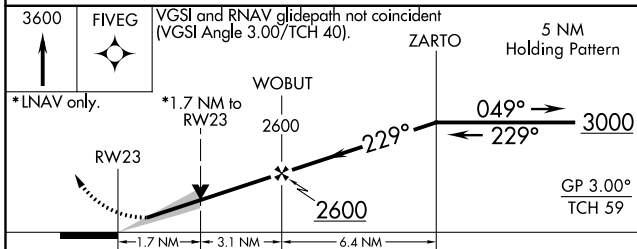
AWOS-3PT 124.175	YNG ASOS 123.75	YOUNGSTOWN APP CON ★ 133.95 322.3	UNICOM 123.0 (CTAF) ①
----------------------------	---------------------------	---	---------------------------------



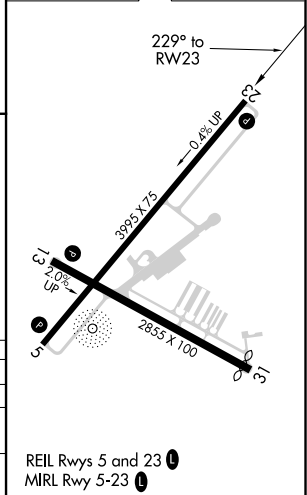
NE-4, 25 FEB 2021 to 25 MAR 2021

NE-4, 25 FEB 2021 to 25 MAR 2021

ELEV 1070	TDZE 1027
-----------	-----------



CATEGORY	A	B	C	D
LPV DA	1288-1		261 (300-1)	NA
LNAV MDA	1580-1	553 (600-1)	1580-1½ 553 (600-1½)	NA
CIRCLING	1580-1 510 (600-1)	1700-1 630 (700-1)	1700-1¾ 630 (700-1¾)	NA



REIL Rwy 5 and 23 ①
MIRL Rwy 5-23 ①