

GAVIOTA THREE DEPARTURE (GVO3 • GVO)

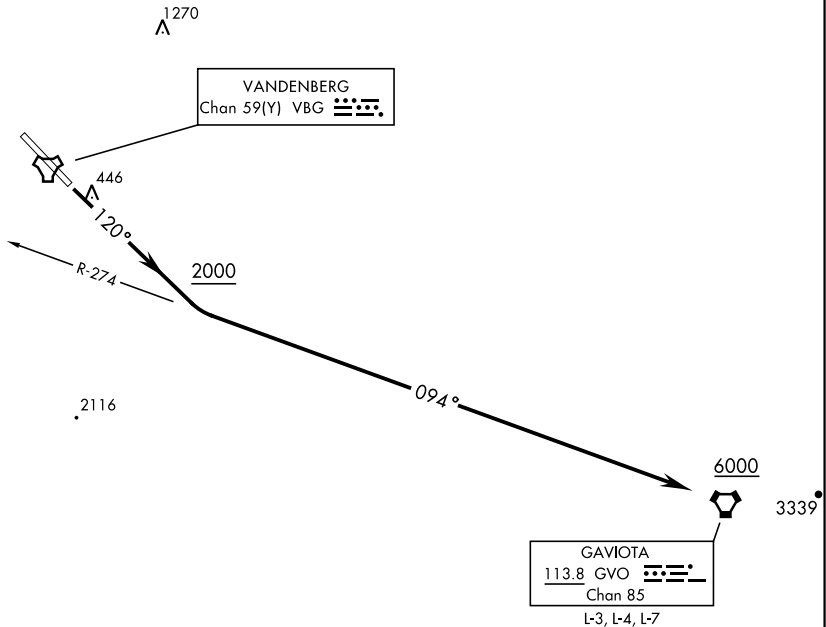
LOMPOC, CALIFORNIA

SL-770 [USAF]

Rwy	Knots	60	120	180	240	300	360
12	V/V(fpm)	330	660	990	1320	1650	1980

ATIS
 133.125 257.975
 GND CON
 121.75 275.8
 CLNC DEL
 121.75 275.8
 VANDENBERG TOWER ★
 124.95 326.2
 SANTA BARBARA DEP CON
 124.15 327.8

Minimum Climb Rate to 1500.



SW-3, 25 FEB 2021 to 25 MAR 2021

SW-3, 25 FEB 2021 to 25 MAR 2021

Use extreme caution for extensive UAS ops in the vicinity



DEPARTURE ROUTE DESCRIPTION

TAKE-OFF RWY 12: Climb on track 120° to 2000. Then climbing left turn to intercept the GVO VORTAC R-274 inbound to GVO. Cross GVO at or above 6000. Expect vectors to first filed fix/route prior to GVO.

GAVIOTA THREE DEPARTURE (GVO3 • GVO)

Amdt 1 28FEB19