

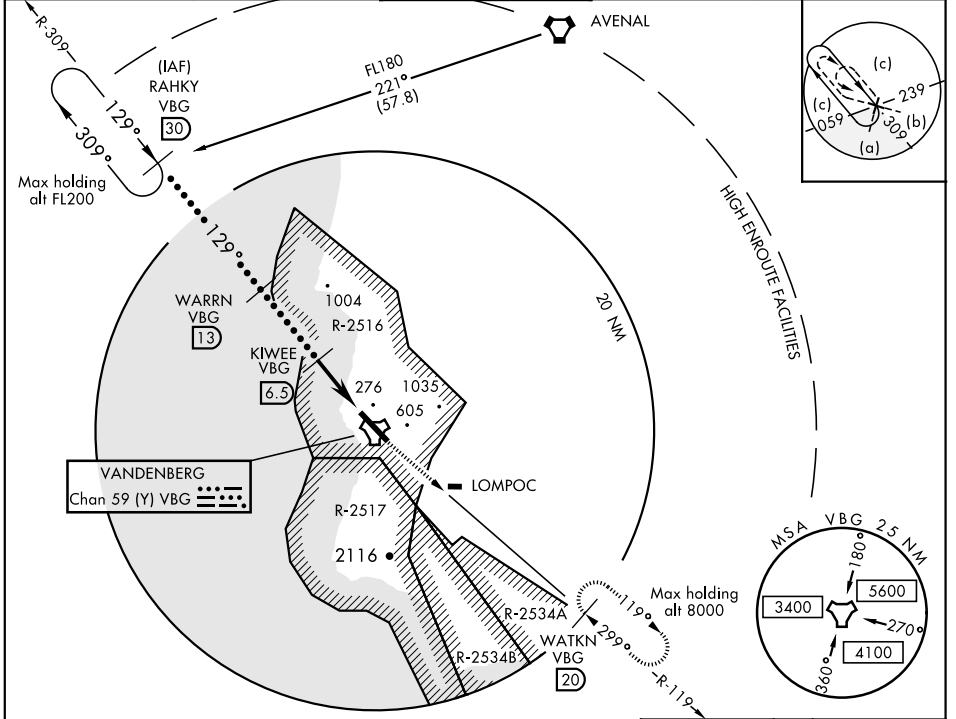
# HI-TACAN RWY 12

TACAN VBG Chan <b>59(Y)</b>	APCH CRS <b>129°</b>	Rwy Ldg <b>15,000</b> TDZE <b>265</b> Arpt Elev <b>368</b>	JAL-770 [USAF]	VANDENBERG AFB (KVBG)
--------------------------------	-------------------------	--	----------------	-----------------------

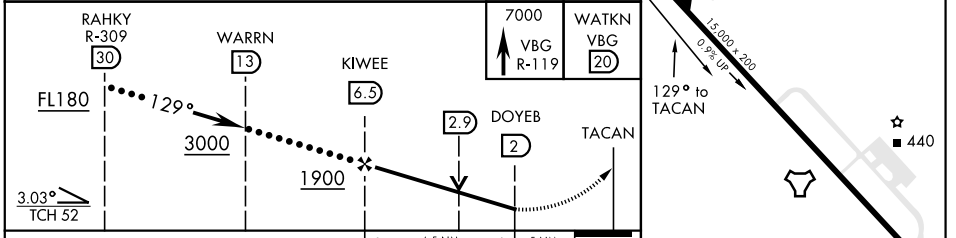
ALSF-2
 

 MISSED APPROACH: Climb out VBG TACAN R-119 until 20 DME (WATKN) and hold. Continue climb in hold maintain 7000.

ATIS <b>133.125 257.975</b>	SANTA BARBARA APP/DEP CON <b>124.15 327.8</b>	VANDENBERG TOWER ★ <b>124.950</b> (CTAF) <b>326.2</b>	GND CON <b>121.75 275.8</b>	CLNC DEL <b>121.75 275.8</b>
--------------------------------	---	--	--------------------------------	---------------------------------



ELEV <b>368</b>	TDZE <b>265</b>
-----------------	-----------------



CATEGORY	C	D	E
S-12 *	740/50	475 (400-1)	
CIRCLING	1020-1¾ 652 (700-1¾)	1180-2¾ 812 (900-2¾)	1560-3 1192 (1200-3)

HIRL Rwy 12-30

# HI-TACAN RWY 12

SW-3, 25 FEB 2021 to 25 MAR 2021

SW-3, 25 FEB 2021 to 25 MAR 2021