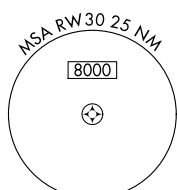
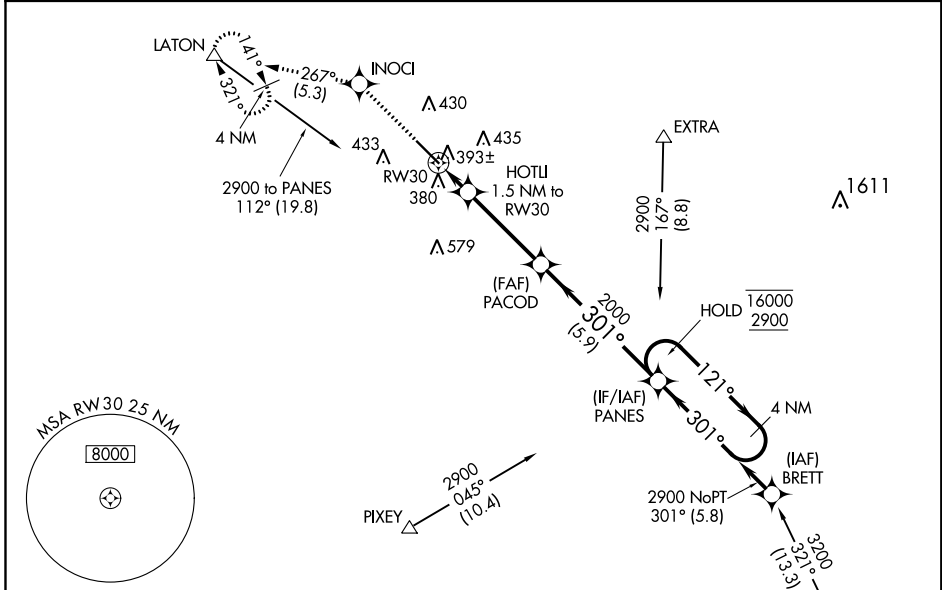


WAAS CH 77623 W30A	APP CRS 301°	Rwy Idg TDZE Apt Elev	5635 295 295
--	------------------------	-----------------------------	---

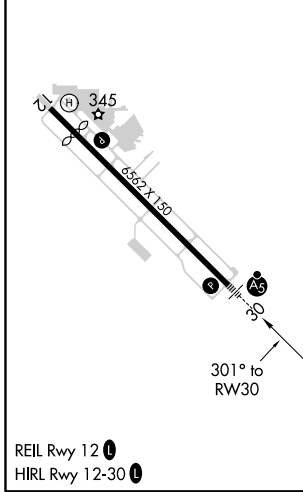
RNAV (GPS) RWY 30

VISALIA MUNI (VIS)

RNP APCH.		MALSR	MISSED APPROACH: Climb to 3000 direct INOCI and on track 267° to LATON and hold, continue climb-in-hold to 3000.
<p>▼ ▲ For uncompensated Baro-VNAV systems, LNAV/VNAV NA below -15°C or above 54°C. For inop ALS, increase LNAV/VNAV all Cats visibility to ¾ SM, LNAV Cats C/D to 1 SM.</p>			
AWOS-3PT 119.925	FRESNO APP CON 118.5	CLNC DEL 118.5	UNICOM 123.05 (CTAF) 0



ELEV 295	D	TDZE 295
----------	----------	----------



3000	INOCI	LATON	PANES	4 NM Holding Pattern
↑	✧	tr 267°	△	
*LNAV only.		HOTLI 1.5 NM to RW30	PACOD	
RW30		*1 NM to RW30	2000	
820*		301°	2000	
1 NM		0.5 NM	3.7 NM	5.9 NM
CATEGORY	A	B	C	D
LPV DA	502-½		207 (300-½)	
LNAV/VNAV DA	554-½		259 (300-½)	
LNAV MDA	660-½ 365 (400-½)		660-⅝ 365 (400-⅝)	
C CIRCLING	720-1 425 (500-1)	760-1 465 (500-1)	760-1½ 465 (500-1½)	940-2 645 (700-2)

SW-2, 25 FEB 2021 to 25 MAR 2021

SW-2, 25 FEB 2021 to 25 MAR 2021