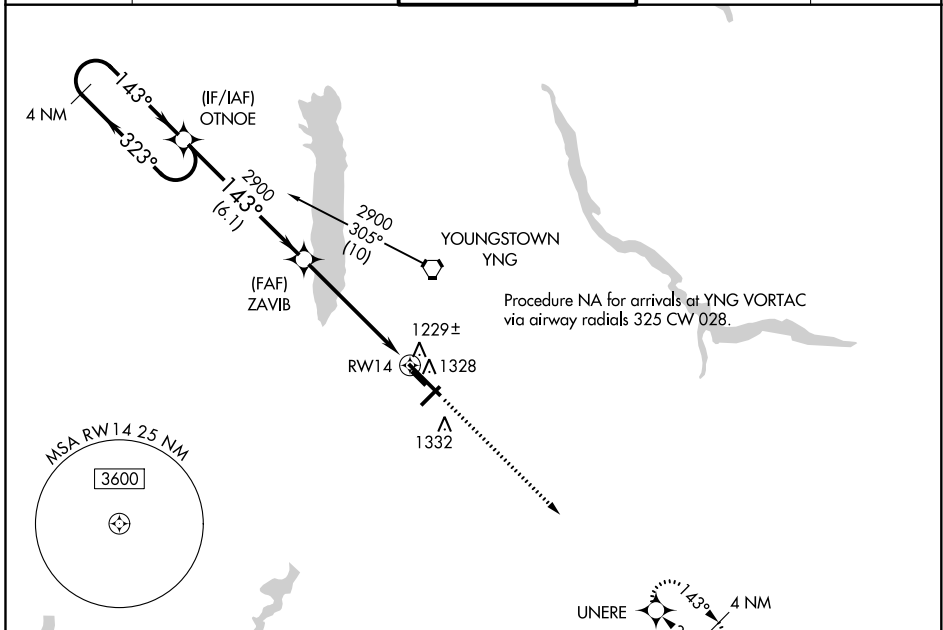


WAAS CH <b>49205</b> <b>W14A</b>	APP CRS <b>143°</b>	Rwy Idg <b>9003</b> TDZE <b>1134</b> Apt Elev <b>1192</b>
--	------------------------	---

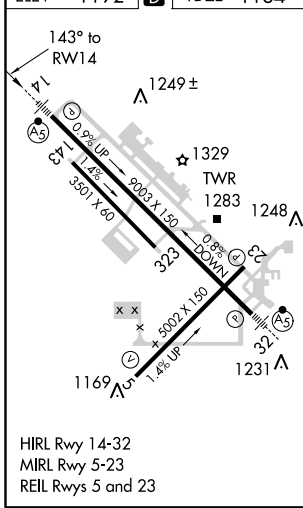
# RNAV (GPS) RWY 14

YOUNGSTOWN-WARREN RGNL (YNG)

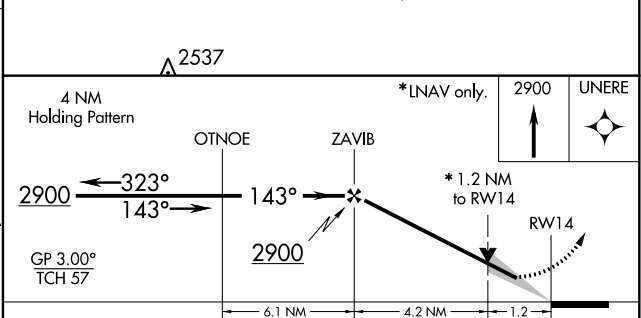
RNP APCH. ⚠ For inop ALS, increase LPV all Cats visibility to RVR 5000 and LNAV Cat D visibility to RVR 6000. For uncompensated Baro-VNAV systems, LNAV/VNAV NA below -17°C or above 46°C. Circling Rwy 5 NA at night.		MALSR 	MISSED APPROACH: Climb to 2900 direct UNERE and hold.	
ATIS <b>123.75</b>	YOUNGSTOWN APP CON * <b>133.95 322.3</b>	YOUNGSTOWN TOWER <b>119.5 263.0</b>	GND CON <b>121.9 275.8</b>	CLNC DEL <b>118.25</b>



ELEV 1192	<b>D</b>	TDZE 1134
-----------	----------	-----------



HIRL Rwy 14-32  
MIRL Rwy 5-23  
REIL Rwy 5 and 23



CATEGORY	A	B	C	D
LPV DA		1384/24	250 (200-1/2)	
LNAV/ VNAV DA		1499/40	365 (400-3/4)	
LNAV MDA	1540/24	406 (400-1/2)	1540/40 406 (400-3/4)	1540/50 406 (400-1)
<b>C</b> CIRCLING	1640-1 448 (500-1)	1660-1 468 (500-1)	1740-1 1/2 548 (600-1 1/2)	1760-2 568 (600-2)

EC-2, 25 FEB 2021 to 25 MAR 2021

EC-2, 25 FEB 2021 to 25 MAR 2021