

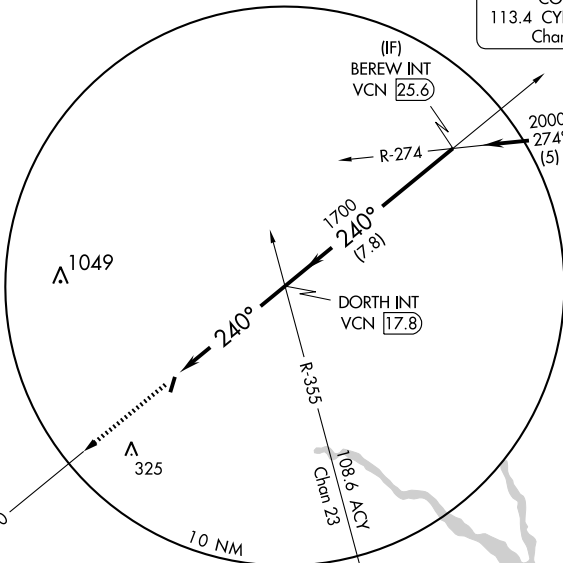
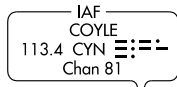
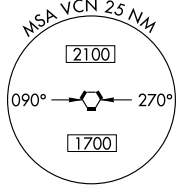
VORTAC VCN <b>115.2</b> Chan 99	APP CRS <b>240°</b>	Rwy Idg TDZE Apt Elev	<b>N/A</b> <b>N/A</b> <b>65</b>
---------------------------------------	------------------------	-----------------------------	---------------------------------------

**VOR-B**  
HAMMONTON MUNI (N81)

<b>▼</b> <b>▲</b> NA	Use Atlantic City altimeter setting, when not received use Mount Holly altimeter setting.	MISSED APPROACH: Climb to 2000 direct VCN VORTAC and hold.
-------------------------	---	--

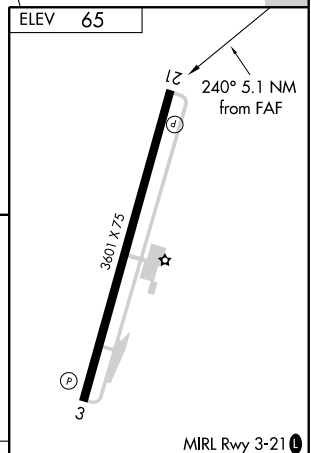
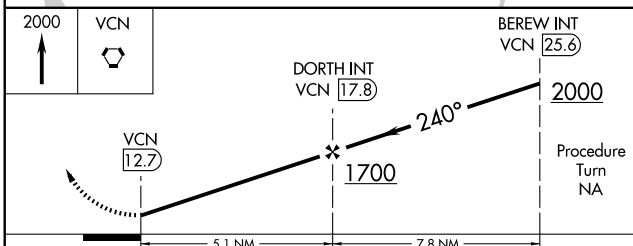
ATLANTIC CITY ASOS <b>108.6 316.15</b>	ATLANTIC CITY APP CON <b>134.25 385.5</b>	UNICOM <b>122.7 (CTAF)</b>	<b>123.5 0</b>
---	--	-------------------------------	----------------

Procedure NA for arrival on CYN VORTAC airway radials 226 CW 274.



NE-2, 30 JUN 2011 to 28 JUL 2011

NE-2, 30 JUN 2011 to 28 JUL 2011



CATEGORY	A	B	C	D	FAF to MAP 5.1 NM					
CIRCLING	560-1	495 (500-1)	560-1½ 495 (500-1½)	NA	Knots	60	90	120	150	180
					Min:Sec	5:06	3:24	2:33	2:02	1:42