

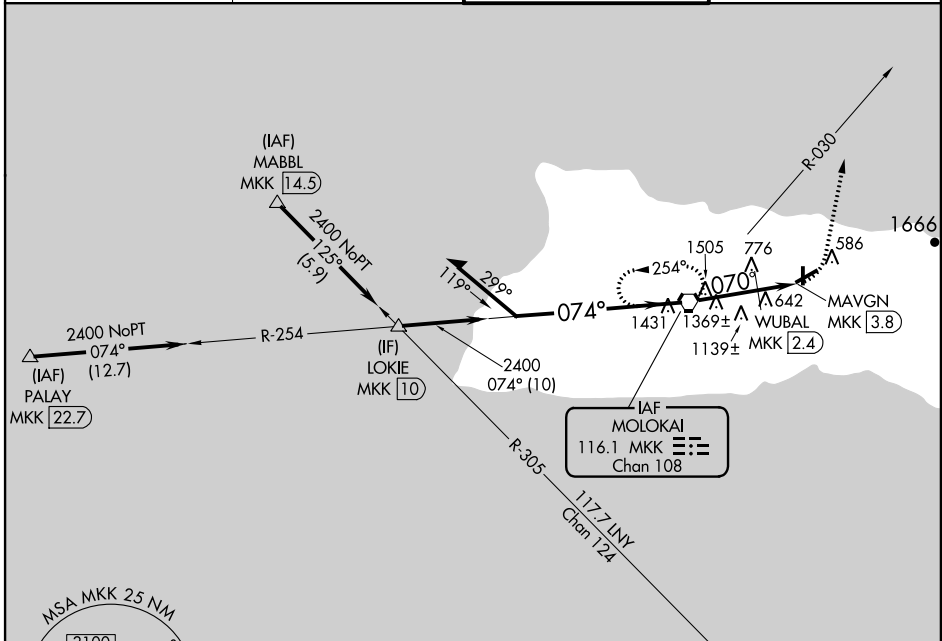
VORTAC MKK 116.1 Chan 108	APP CRS 070°	Rwy Idg TDZE Apt Elev N/A N/A 454
---	------------------------	---

VOR or TACAN-A MOLOKAI (MKK) (PHMK)

⚠ Circling to Rwy 17 and 23 NA at night

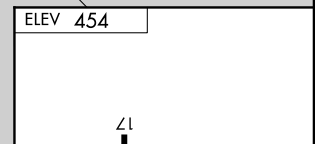
MISSED APPROACH: Climbing left turn to 3500 on heading 360° and MKK R-030 northeast bound, then left turn direct MKK VORTAC and hold.

ATIS 128.2	HCF CENTER 124.1 317.5	MOLOKAI TOWER* 125.7 (CTAF) 306.2	GND CON 121.9
----------------------	----------------------------------	---	-------------------------



PAC, 29 MAY 2014 to 24 JUL 2014

PAC, 29 MAY 2014 to 24 JUL 2014



Remain within 10 NM	MKK VORTAC		3500	MKK R-030 NE bound	MKK
	2700	254°	3500	hdg 360°	MKK
	2700	074°	2400	070°	1820
			2.4 NM		1.4 NM

CATEGORY	A	B	C	D
CIRCLING	1820-1¼ 1366 (1400-1¼)	1820-1½ 1366 (1400-1½)	1820-3	1366 (1400-3)
WUBAL FIX MINIMUMS (DME REQUIRED)				
CIRCLING	1280-1¼ 826 (900-1¼)	1280-2½ 826 (900-2½)	1440-3	986 (1000-3)

ELEV 454

REIL Rwy 5

MIRL Rws 5-23 and 17-35

FAF to MAP 3.8 NM

Knots	60	90	120	150	180
Min:Sec	3:48	2:32	1:54	1:31	1:16