

FRTZI TWO ARRIVAL (RNAV)

ST-754 (FAA)

HONOLULU INTL (HNL) (PHNL)
HONOLULU, HAWAII

PAC, 29 MAY 2014 to 24 JUL 2014

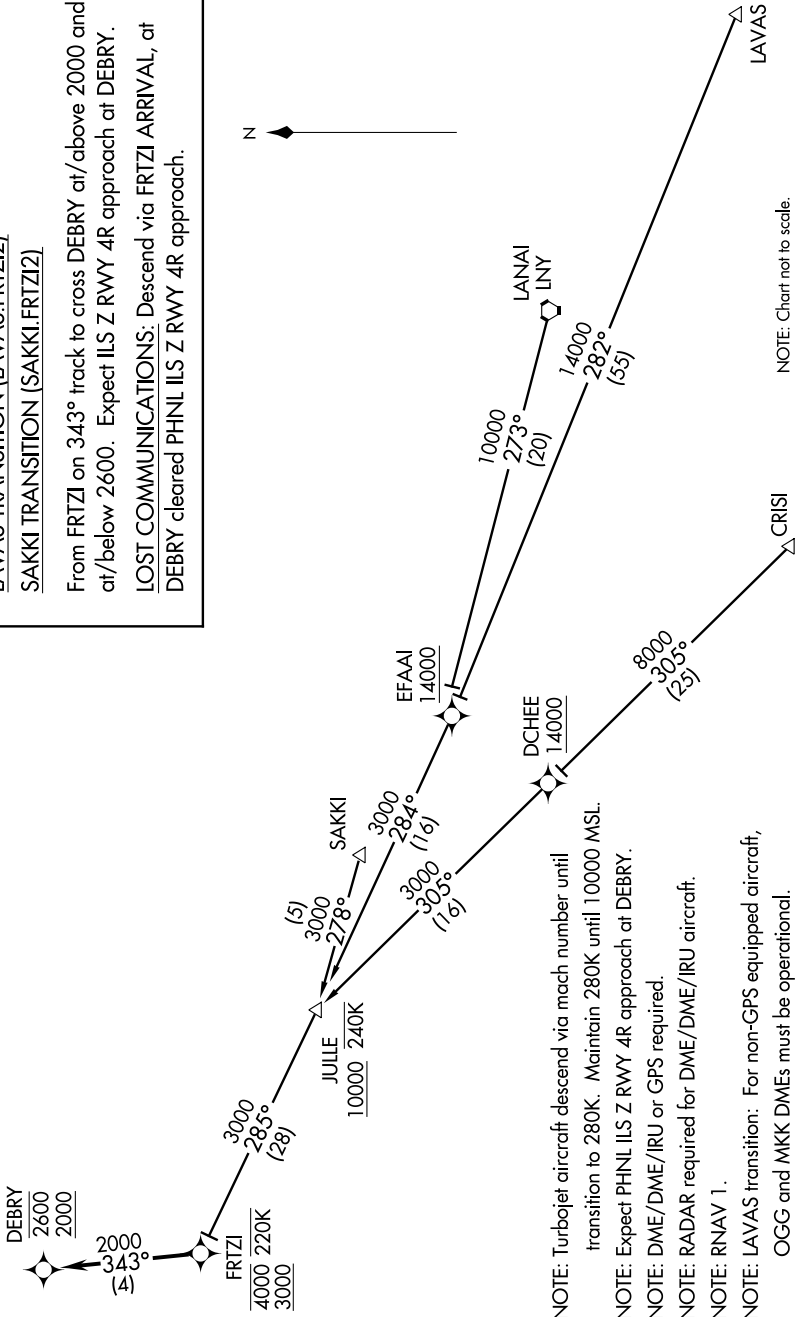
ARRIVAL ROUTE DESCRIPTION

CRISI TRANSITION (CRISI.FRTZI2)
LANAI TRANSITION (LNY.FRTZI2)
LAVAS TRANSITION (LAVAS.FRTZI2)
SAKKI TRANSITION (SAKKI.FRTZI2)

From FRTZI on 343° track to cross DEBRY at/above 2000 and at/below 2600. Expect ILS Z RWY 4R approach at DEBRY.

LOST COMMUNICATIONS: Descend via FRTZI ARRIVAL, at DEBRY cleared PHNL ILS Z RWY 4R approach.

HCF CENTER
 126.0 278.3
 119.3 307.1 (SAKKI TRANSITION)



NOTE: Chart not to scale.

NOTE: Turbojet aircraft descend via mach number until transition to 280K. Maintain 280K until 10000 MSL.

NOTE: Expect PHNL ILS Z RWY 4R approach at DEBRY.

NOTE: DME/DME/IRU or GPS required.

NOTE: RADAR required for DME/DME/IRU aircraft.

NOTE: RNAV 1.

NOTE: LAVAS transition: For non-GPS equipped aircraft, OGG and MKK DMEs must be operational.