


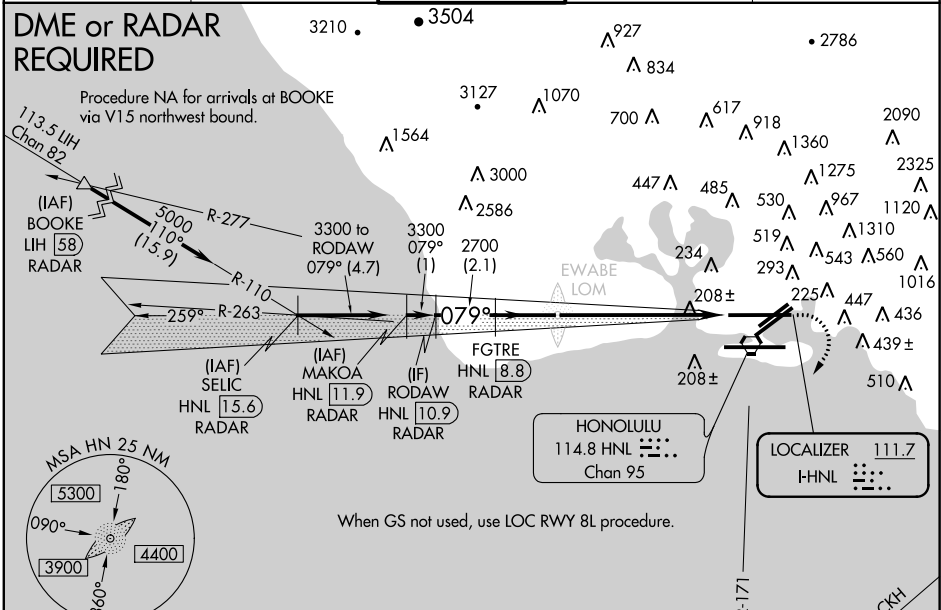
LOC I-HNL <b>111.7</b>	APP CRS <b>079°</b>	Rwy Idg <b>12312</b> TDZE <b>13</b> Apt Elev <b>13</b>
---------------------------	------------------------	--

# ILS RWY 8L

HONOLULU INTL (HNL) (PHNL)

<p><b>DME</b> from HNL VORTAC. Simultaneous reception of I-HNL and HNL DME required.</p>	<p><b>MALS/R</b></p> 	<p><b>MISSED APPROACH:</b> Climb to 500 then climbing right turn to 5000 via HNL VORTAC R-171 to ALANA INTL/HNL 13.9 DME and hold, continue climb-in-hold to 5000.</p>
--	--	--

<p><b>ATIS</b> <b>127.9 251.15</b></p>	<p><b>HCF APPROACH</b> <b>118.3 269.0</b></p>	<p><b>HONOLULU TOWER</b> <b>118.1 257.8</b></p>	<p><b>GND CON</b> <b>121.9 348.6</b></p>	<p><b>CLNC DEL</b> <b>121.4 281.4</b></p>
--	---	---	--	---

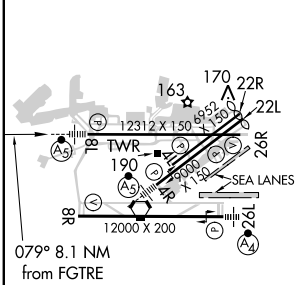


PAC, 29 MAY 2014 to 24 JUL 2014

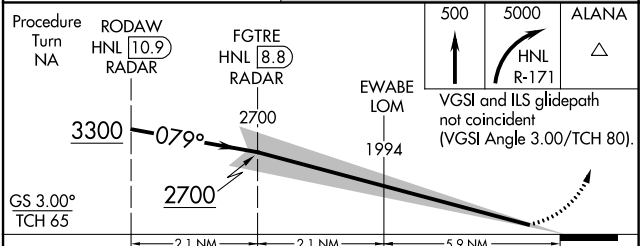
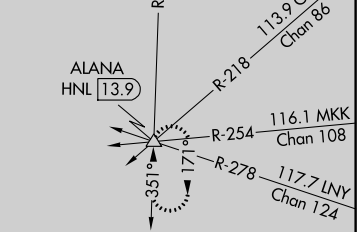
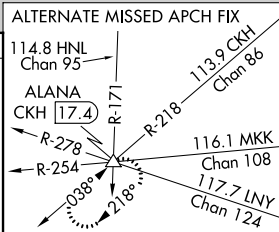
PAC, 29 MAY 2014 to 24 JUL 2014

ELEV <b>13</b>	<b>D</b>	TDZE <b>13</b>
----------------	----------	----------------

SEALANES:  
8W-28W 5000 X 300  
4W-22W 3000 X 150



MIRL Rwy 4L-22R  
REIL Rwy 4L, 8R, 22L, 22R and 26R  
HIRL Rwy 4R-22L, 8L-26R and 8R-26L



CATEGORY	A	B	C	D
S-ILS 8L	213-1/2 200 (200-1/2)			