

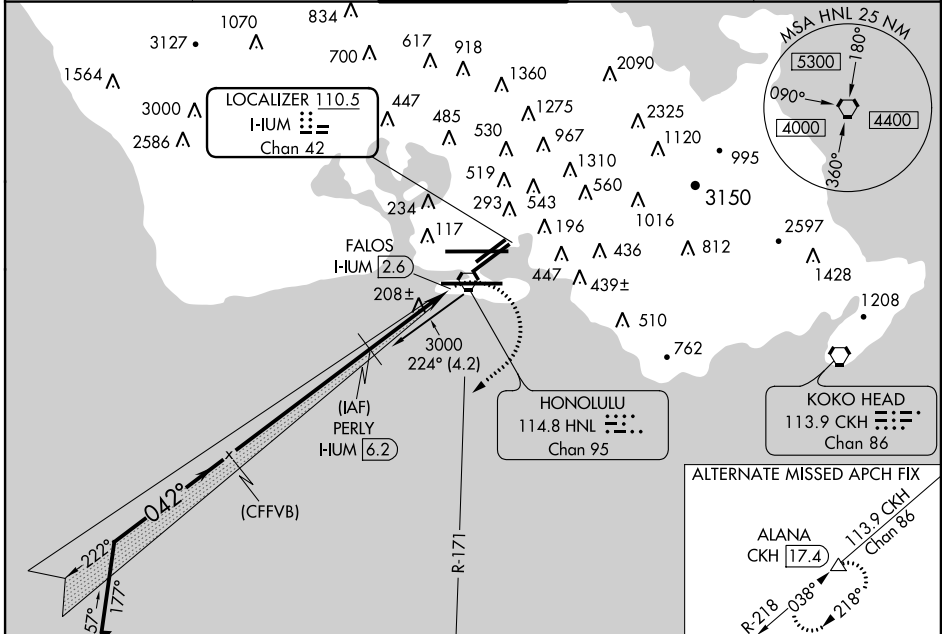
LOC/DME HUM 110.5 Chan 42	APP CRS 042°	Rwy Idg 8950 TDZE 9 Apt Elev 13
---	------------------------	--

LOC/DME RWY 4R

HONOLULU INTL (HNL) (PHNL)

For inoperative MALSR, increase Cat E visibility to 1 3/8 mile. Circling Cat A, B, C, NA northwest of airport between Rwy's 8L-26R and 4L-22R. Circling Cat D, E, NA north of Rwy 8L-26R.	MALSR	MISSED APPROACH: Climbing right turn to 3000 heading 220° and HNL VORTAC R-171 to ALANA INT/HNL 13.9 DME and hold.

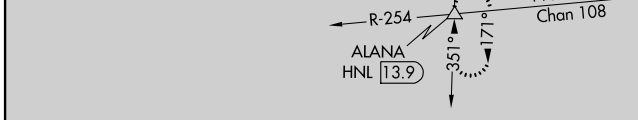
ATIS 127.9 251.15	HCF APPROACH 118.3 269.0	HONOLULU TOWER 118.1 257.8	GND CON 121.9 348.6	CLNC DEL 121.4 281.4
-----------------------------	------------------------------------	--------------------------------------	-------------------------------	--------------------------------



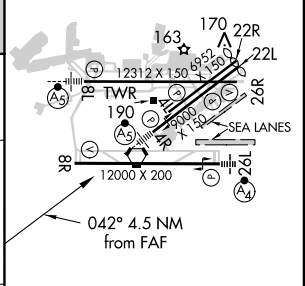
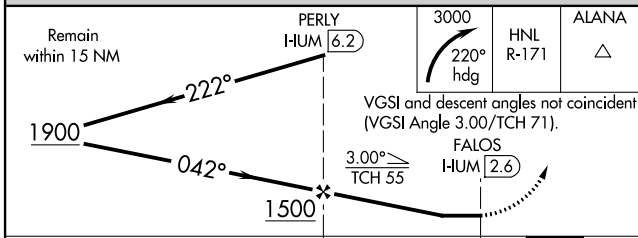
PAC, 29 MAY 2014 to 24 JUL 2014

PAC, 29 MAY 2014 to 24 JUL 2014

ELEV 13		TDZE 9
---------	--	--------



SEALANES:
8W-26W 5000 X 300
4W-22W 3000 X 150



CATEGORY	A	B	C	D	E
S-4R	460-3/4	451 (500-3/4)	460-7/8	451 (500-7/8)	
CIRCLING	620-1 1/4	607 (700-1 1/4)	620-13/4	820-2 1/2	1760-3
			607 (700-13/4)	807 (900-2 1/2)	1747 (1800-3)

MIRL Rwy 4L-22R
REIL Rwy's 4L, 8R, 22L, 22R and 26R
HIRL Rwy's 4R-22L, 8L-26R and 8R-26L