

REEEF FOUR ARRIVAL (RNAV)

ST-754 (FAA)

HONOLULU INTL (HNL) (PHNL)

HONOLULU, HAWAII

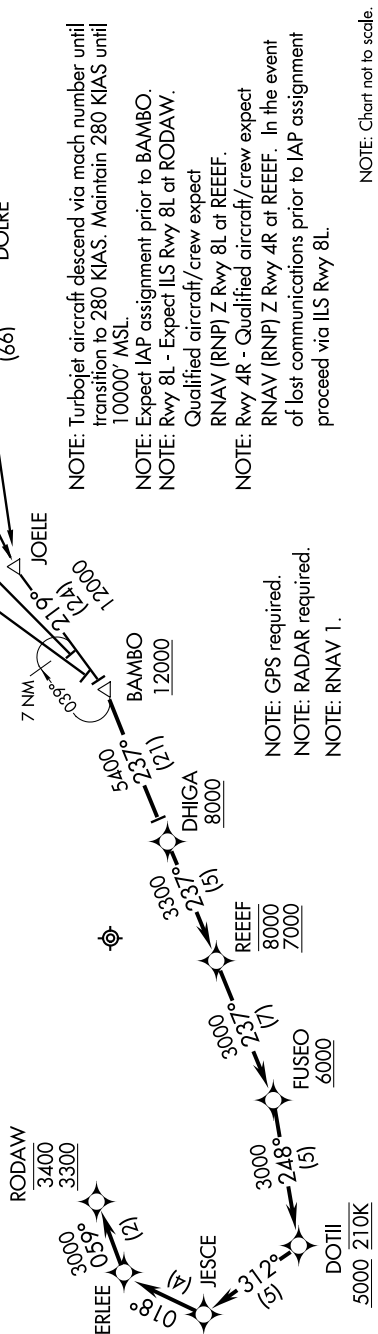
PAC, 29 MAY 2014 to 24 JUL 2014

ARRIVAL ROUTE DESCRIPTION

- APACK TRANSITION (APACK.REEEF4)
- BITTA TRANSITION (BITTA.REEEF4)
- CLUTS TRANSITION (CLUTS.REEEF4)
- DENNS TRANSITION (DENNS.REEEF4)
- ZIGIE TRANSITION (ZIGIE.REEEF4)

From BAMBO FIX as depicted to RODAW WP. Cross DHIGA at/above 8000, cross REEF at/above 7000, and at/below 8000, cross FUSEO at/above 6000, cross DOTII at/above 5000 at 210K, cross RODAW at/above 3300 and at/below 3400.

LOST COMMUNICATIONS: Descend via the REEF Arrival, at RODAW cleared PHNL ILS RWY 8L approach.



NOTE: Turbojet aircraft descend via mach number until transition to 280 KIAS. Maintain 280 KIAS until 10000' MSL.

NOTE: Expect IAP assignment prior to BAMBO.
 NOTE: Rwy 8L - Expect ILS Rwy 8L at RODAW.
 Qualified aircraft/crew expect
 RNAV (RNP) Z Rwy 8L at REEF.

NOTE: Rwy 4R - Qualified aircraft/crew expect
 RNAV (RNP) Z Rwy 4R at REEF. In the event of lost communications prior to IAP assignment proceed via ILS Rwy 8L.

NOTE: GPS required.
 NOTE: RADAR required.
 NOTE: RNAV 1.

NOTE: Chart not to scale.

REEEF FOUR ARRIVAL (RNAV)