

APP CRS	Rwy Idg	12312
079°	TDZE	13
	Apt Elev	13

RNAV (RNP) Z RWY 8L

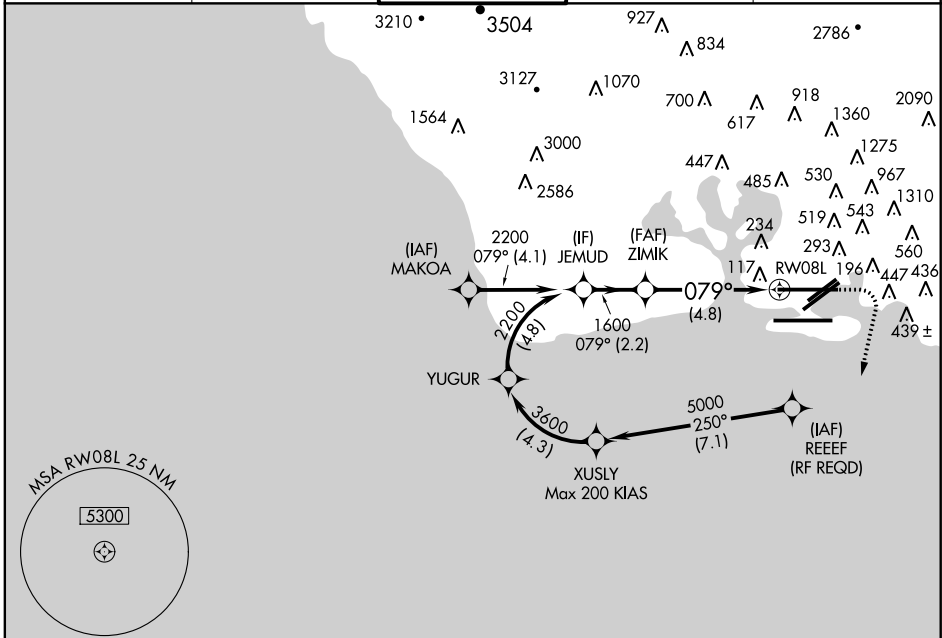
HONOLULU INTL (HNL) (PHNL)

▽ For uncompensated Baro-VNAV systems, procedure NA below 16°C (61°F) or above 43°C (110°F). For inoperative MALS/R, increase RNP 0.30 all Cats visibility to 1 mile. GPS required.



MISSED APPROACH: Climb to 420 then climbing right turn to 3000 direct ALANA and hold.

ATIS 127.9 251.15	HCF APPROACH 118.3 269.0	HONOLULU TOWER 118.1 257.8	GND CON 121.9 348.6	CLNC DEL 121.4 281.4
-----------------------------	------------------------------------	--------------------------------------	-------------------------------	--------------------------------

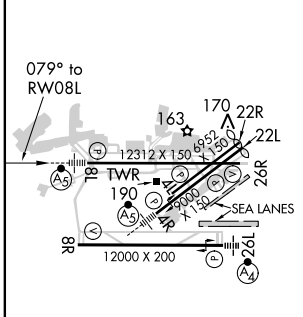


PAC, 29 MAY 2014 to 24 JUL 2014

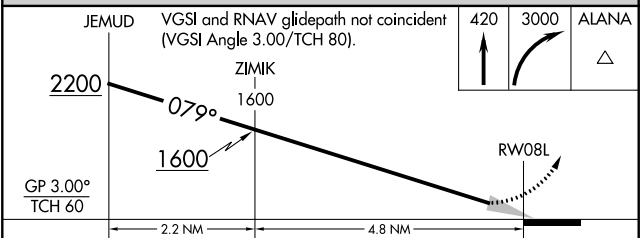
PAC, 29 MAY 2014 to 24 JUL 2014

ELEV 13	D	TDZE 13
---------	----------	---------

SEALANES:
8W-26W 5000 X 300
4W-22W 3000 X 150



MIRL Rwy 4L-22R
REIL Rwy 4L, 8R, 22L, 22R and 26R
HIRL Rwy 4R-22L, 8L-26R and 8R-26L



CATEGORY	A	B	C	D
RNP 0.30 DA	345-½ 332 (400-½)			

AUTHORIZATION REQUIRED