

VOR/DME EWO 110.8 Chan 45	APP CRS 132°	Rwy Idg TDZE Apt Elev N/A N/A 921
---	------------------------	---

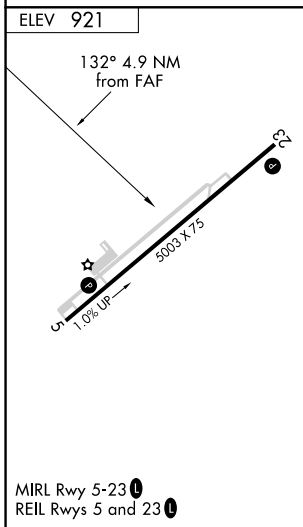
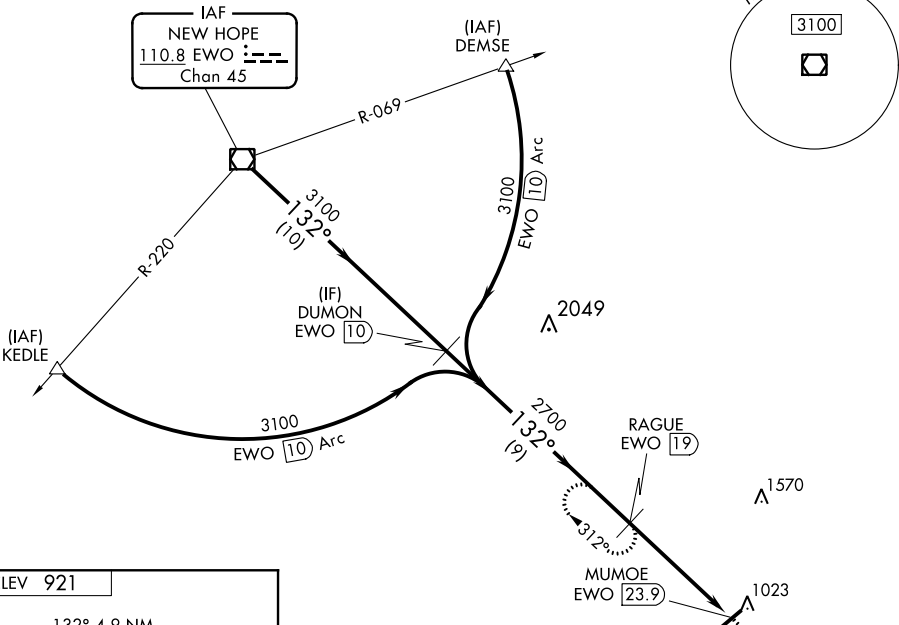
VOR/DME-A
TAYLOR COUNTY (AAS)

NA When local altimeter setting not received, use Somerset altimeter setting: increase all MDA 100 feet; increase Cat C visibility ¼ mile and Cat D visibility ½ mile.

MISSED APPROACH: Climbing right turn to 3100 on heading 360° and on EWO R-132 to RAGUE/19 DME and hold.

AWOS-3 121.125	INDIANAPOLIS CENTER 121.175 353.65	UNICOM 122.7 (CTAF)
--------------------------	--	-------------------------------

DME REQUIRED



EWO VOR/DME 3100	DUMON EWO 10	3100 hdg 360°	EWO R-132	RAGUE EWO 19
3100 — 132° — 3100		2700	MUMOE EWO 23.9	
10 NM		9 NM	4.9 NM	
CATEGORY	A	B	C	D
C CIRCLING	1540-1	619 (700-1)	1540-1¾ 619 (700-1¾)	1660-2¼ 739 (800-2¼)

SE-1, 25 FEB 2021 to 25 MAR 2021

SE-1, 25 FEB 2021 to 25 MAR 2021