

LOC/DME I-ABY <b>108.5</b> Chan <b>22</b>	APP CRS <b>047°</b>	Rwy Idg <b>6601</b> TDZE <b>196</b> Apt Elev <b>196</b>
---	------------------------	---

# ILS or LOC RWY 5

SOUTHWEST GEORGIA RGNL (ABY)

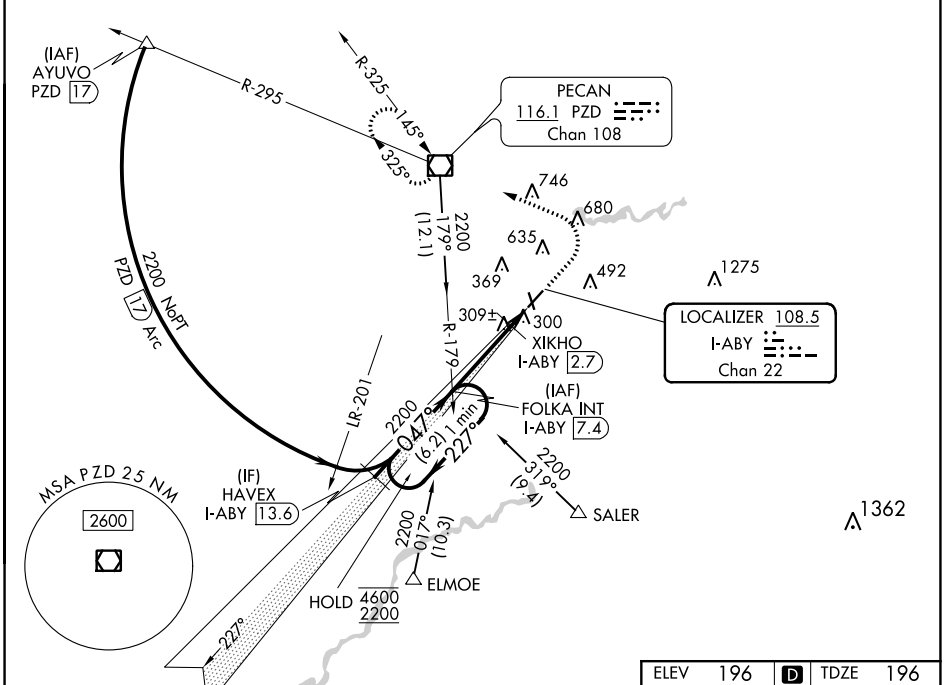
From ELMOE and SALER: RNAV-1 GPS required.

⚠ For inop ALS, increase S-LOC 5 Cats C/D visibility to 1½ SM and XIKHO fix minimums S-LOC 5 Cats C/D visibility to RVR 5500.

MALSR

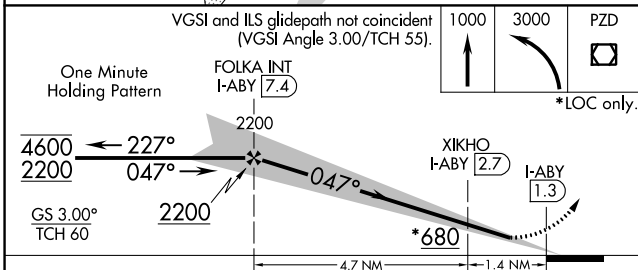
MISSED APPROACH: Climb to 1000 then climbing left turn to 3000 direct PZD VOR/DME and hold.

ATIS <b>133.05</b>	JACKSONVILLE CENTER <b>125.75 226.8</b>	ALBANY TOWER * <b>120.25 (CTAF) 0336.4</b>	GND CON <b>121.9 348.6</b>	UNICOM <b>122.95</b>
-----------------------	--	---	-------------------------------	-------------------------



SE-4, 25 FEB 2021 to 25 MAR 2021

SE-4, 25 FEB 2021 to 25 MAR 2021



ELEV 196		TDZE 196
----------	--	----------

1000	3000	PZD
------	------	-----

\*LOC only.

047° 6.1 NM from FAF

HIRL Rwy 5-23

MIRL Rwy 17-35

REIL Rws 17 and 23

XIKHO FIX MINIMUMS (DME REQUIRED)				
S-LOC 5	560/24	364 (400-½)	560/35	364 (400-¾)
	640-1	660-1	940-2¼	940-2½
	444 (500-1)	464 (500-1)	744 (800-2¼)	744 (800-2½)

FAF to MAP 6.1 NM					
Knots	60	90	120	150	180
Min:Sec	6:06	4:04	3:03	2:26	2:02