

WAAS CH <b>65919</b> <b>W01A</b>	APP CRS <b>007°</b>	Rwy Idg TDZE <b>511</b> Apt Elev <b>516</b>
--	------------------------	---

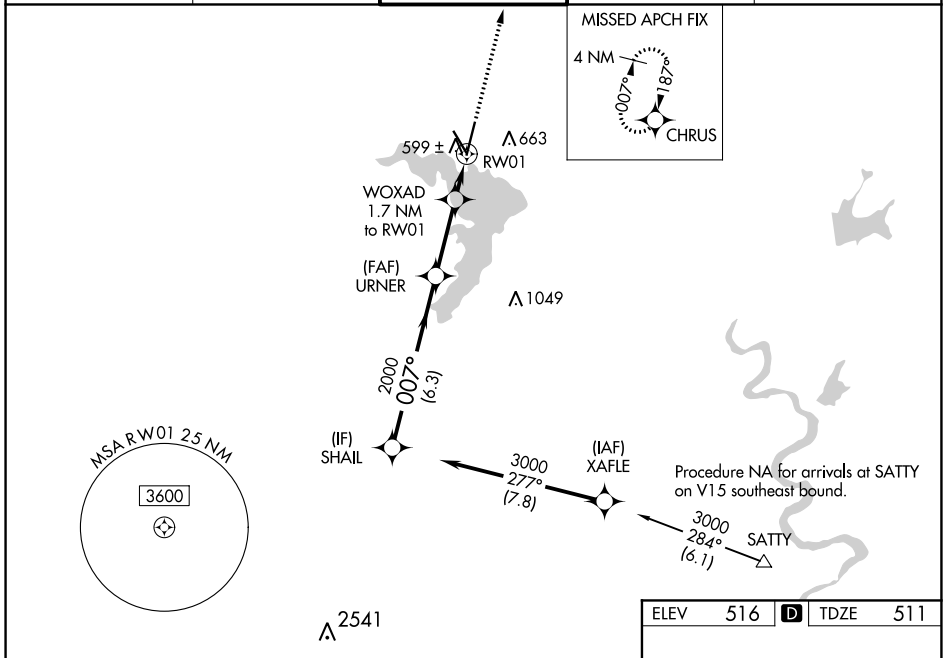
# RNAV (GPS) RWY 1

WACO RGNL (ACT)

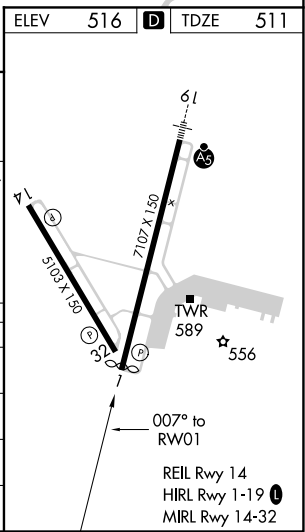
**ASR** For uncompensated Baro-VNAV systems, LNAV/VNAV NA below -7°C (19°F) or above 54°C (130°F). DME/DME RNP-0.3 NA. When local altimeter setting not received, use McGregor Executive altimeter setting and increase all DA 31 feet and all MDA 40 feet; increase LPV all Cats and LNAV/VNAV all Cats visibility 1/8 mile and Circling Cat D 1/4 mile. Baro-VNAV and VDP NA with McGregor Executive altimeter setting. Helicopter visibility reduction below 3/4 SM NA.

**MISSED APPROACH:** Climb to 3000 direct CHRUS and hold.

ATIS <b>123.85</b>	WACO APP CON ★ <b>127.65 227.125</b>	WACO TOWER ★ <b>119.3 (CTAF) 0 257.8</b>	GND CON <b>121.9</b>	UNICOM <b>122.95</b>
-----------------------	---	---	-------------------------	-------------------------



GP 3.00° TCH 55	SHAIL	URNER	WOXAD 1.7 NM to RWY 1	CHRUS
	3000	2000	* 0.9 NM to RWY 1	* LNAV only.
	6.3 NM	2.8 NM	0.8 NM	0.9 NM
ANGLE	007°	1100		
CATEGORY	A	B	C	D
LPV DA		761-3/4	250 (300-3/4)	
LNAV/VNAV DA		782-7/8	271 (300-7/8)	
LNAV MDA		860-1	349 (400-1)	
CIRCLING	940-1 424 (500-1)	980-1 464 (500-1)	1020-1 1/2 504 (600-1 1/2)	1160-2 644 (700-2)



SC-3, 25 FEB 2021 to 25 MAR 2021

SC-3, 25 FEB 2021 to 25 MAR 2021