

WAAS CH <b>69420</b> <b>W32A</b>	APP CRS <b>322°</b>	Rwy Idg TDZE Apt Elev	<b>5103</b> <b>516</b> <b>516</b>
--	------------------------	-----------------------------	---

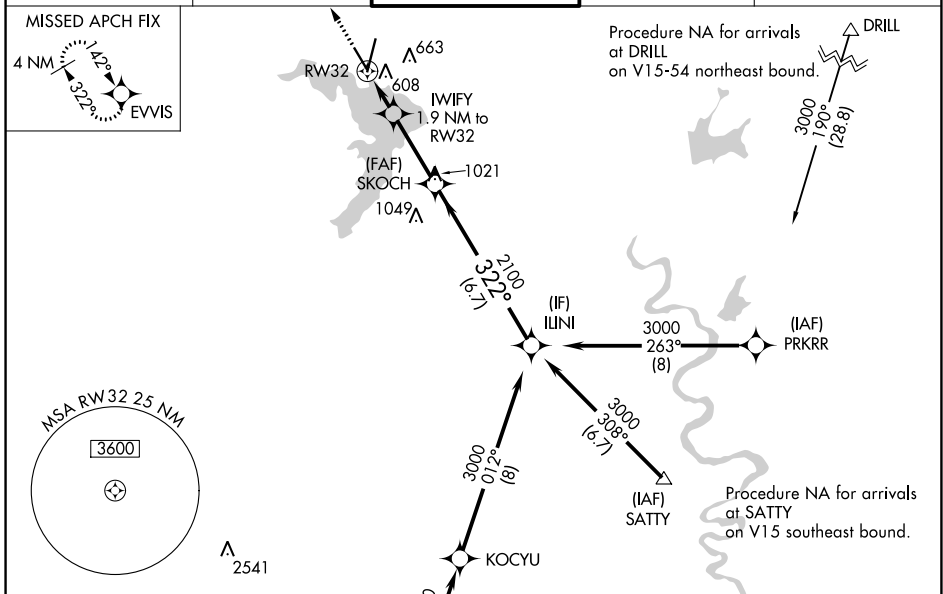
# RNAV (GPS) RWY 32

WACO RGNL (ACT)

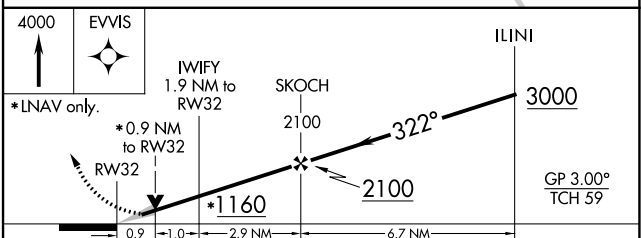
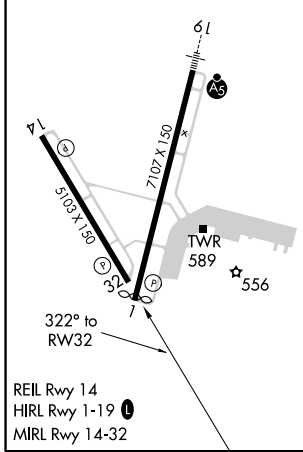
**ASR** **⚠** DME/DME RNP-0.3 NA. When local altimeter setting not received use Mc Gregor Executive altimeter setting and increase all DA 31 feet and all MDA 40 feet; increase LPV and LNAV/VNAV all Cats and LNAV Cats C/D visibility 1/8 mile and Circling Cat D visibility 1/4 mile. For uncompensated Baro-VNAV systems, LNAV/VNAV NA below -13°C (9°F) or above 54°C (130°F). Baro-VNAV NA when using Mc Gregor Executive altimeter setting. VDP NA with Mc Gregor Executive altimeter setting.

**MISSED APPROACH:** Climb to 4000 direct EVVIS and hold, continue climb-in-hold to 4000.

ATIS <b>123.85</b>	WACO APP CON * <b>127.65 227.125</b>	WACO TOWER * <b>119.3(CTAF) 257.8</b>	GND CON <b>121.9</b>	UNICOM <b>122.95</b>
-----------------------	---	--	-------------------------	-------------------------



ELEV 516	<b>D</b>	TDZE 516
----------	----------	----------



CATEGORY	A	B	C	D
LPV DA		766-3/4	250 (300-3/4)	
LNAV/VNAV DA		773-3/4	257 (300-3/4)	
LNAV MDA		860-1	344 (400-1)	
<b>C</b> CIRCLING	940-1 424 (500-1)	980-1 464 (500-1)	1020-1 1/2 504 (600-1 1/2)	1160-2 644 (700-2)

SC-3, 25 FEB 2021 to 25 MAR 2021

SC-3, 25 FEB 2021 to 25 MAR 2021