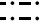


(HOCUT5.HOCUT) 20030
HOCUT FIVE DEPARTURE

CALIFORNIA REDWOOD COAST-HUMBOLDT COUNTY (ACV)
 AL-519 (FAA)
 ARCATA/EUREKA, CALIFORNIA

OAKLAND FSS
 122.6
 SEATTLE CENTER
 124.85 306.3

CRESCENT CITY
 109.0 CEC 
 Chan 27
 N41°46.77' - W124°14.45'
 L-2, H-3

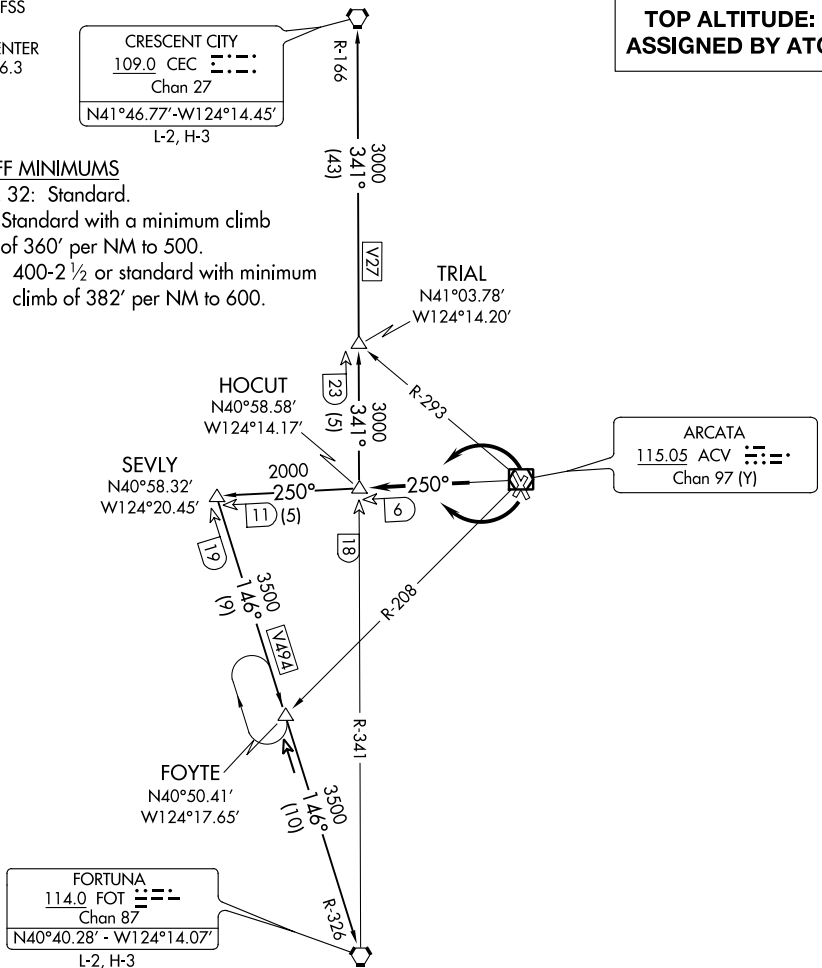
**TOP ALTITUDE:
 ASSIGNED BY ATC**

TAKEOFF MINIMUMS

Rwy 19, 32: Standard.
 Rwy 1: Standard with a minimum climb
 of 360' per NM to 500.
 Rwy 14: 400-2 1/2 or standard with minimum
 climb of 382' per NM to 600.

SW-2, 25 FEB 2021 to 25 MAR 2021

SW-2, 25 FEB 2021 to 25 MAR 2021



NOTE: Chart not to scale.

DEPARTURE ROUTE DESCRIPTION

TAKEOFF RUNWAYS 1 and 32: Climbing left turn on ACV R-250, thence. . . .
TAKEOFF RUNWAYS 14 and 19: Climbing right turn on ACV R-250, thence. . . .
 . . . on (transition) or (assigned route).

CRESCENT CITY TRANSITION (HOCUT5.CEC): From over HOCUT INT on FOT R-341
 and CEC R-166 to CEC VORTAC.

FORTUNA TRANSITION (HOCUT5.FOT): From over HOCUT INT on ACV R-250 to
 SEVLY INT, then via FOT R-326 to FOT VORTAC.

HOCUT FIVE DEPARTURE
 (HOCUT5.HOCUT) 12OCT17

ARCATA/EUREKA, CALIFORNIA
 CALIFORNIA REDWOOD COAST-HUMBOLDT COUNTY (ACV)