

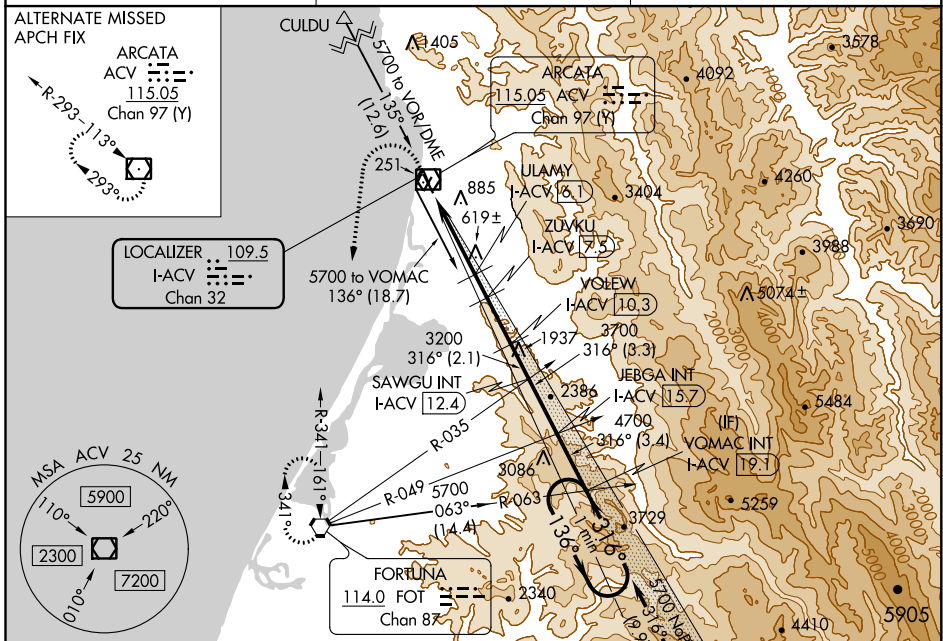
LOC/DME I-ACV 109.5 Chan 32	APP CRS 316°	Rwy Idg TDZE Apt Elev	5846 221 222
---	------------------------	-----------------------------	---

ILS or LOC RWY 32

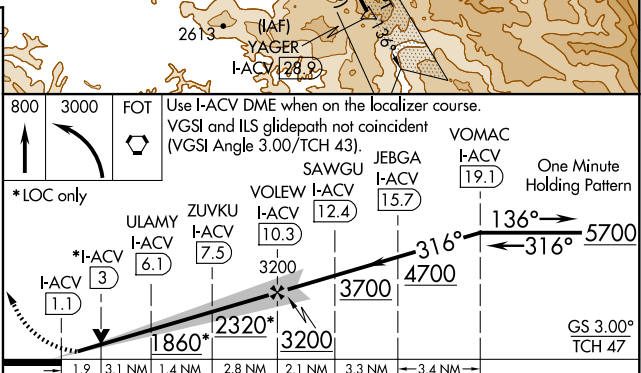
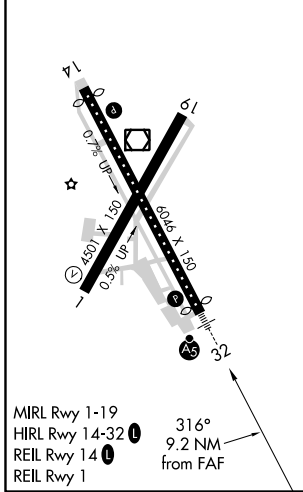
CALIFORNIA REDWOOD COAST-HUMBOLDT COUNTY (ACV)

NA Circling NA northeast of Rwy 14-32. DME required.	MALSR 	MISSED APPROACH: Climb to 800 then climbing left turn to 3000 direct FOT VORTAC and hold.
--	------------------	--

ASOS 118.525	SEATTLE CENTER 124.85 306.3	UNICOM 123.0 (CTAF)
-------------------------------	--	--------------------------------------



ELEV 222	D	TDZE 221
-----------------	----------	-----------------



CATEGORY	A	B	C	D
S-ILS 32	441/18 220 (300-1/2)			
S-LOC 32	880/24	659 (700-1/2)	880-1 3/8	659 (700-1 3/8)
C CIRCLING	880-1	658 (700-1)	880-1 7/8	880-2 658 (700-2)

SW-2, 25 FEB 2021 to 25 MAR 2021

SW-2, 25 FEB 2021 to 25 MAR 2021