

WAAS CH <b>62801</b> <b>W14A</b>	APP CRS <b>136°</b>	Rwy Idg TDZE Apt Elev	<b>5601</b> <b>205</b> <b>222</b>
--	------------------------	-----------------------------	---

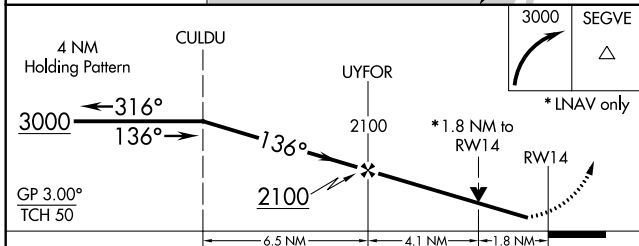
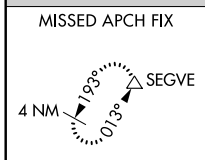
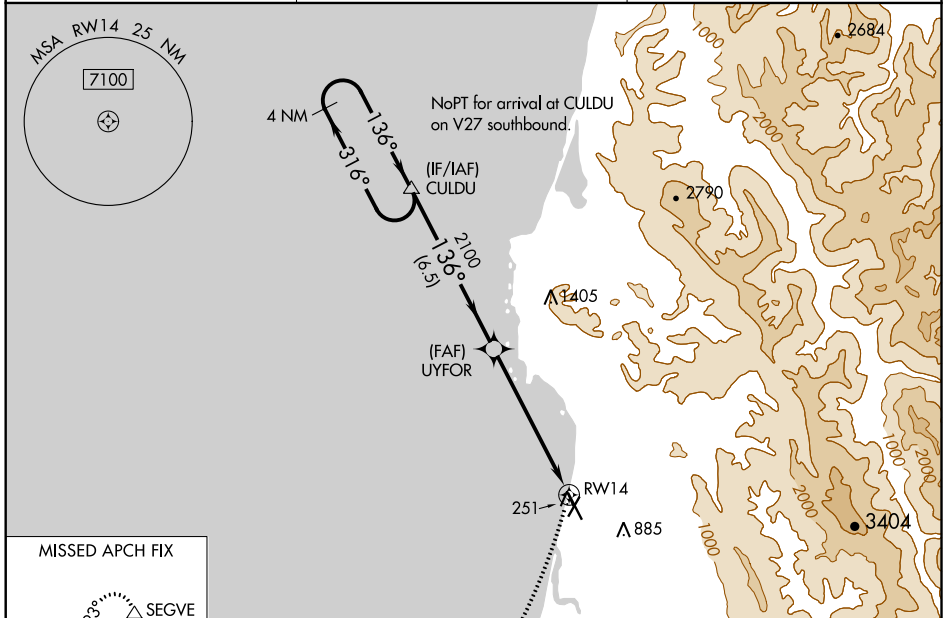
# RNAV (GPS) RWY 14

CALIFORNIA REDWOOD COAST-HUMBOLDT COUNTY (ACV)

For uncompensated Baro-VNAV systems, LNAV/VNAV NA below -2°C (29°F) or above 54°C (130°F). Circling NA northeast of Rwy 14-32. DME/DME RNP-0.3 NA. Rwy 14 helicopter visibility reduction below ¼ SM NA.

MISSED APPROACH: Climbing right turn to 3000 direct SEGVE and hold.

ASOS <b>118.525</b>	SEATTLE CENTER <b>124.85 306.3</b>	UNICOM <b>123.0 (CTAF)</b>
------------------------	---------------------------------------	-------------------------------



ELEV 222	<b>D</b>	TDZE 205
----------	----------	----------

MIRL Rwy 1-19  
HIRL Rwy 14-32  
REIL Rwy 14  
REIL Rwy 1

CATEGORY	A	B	C	D
LPV DA	455/45		250 (300-¾)	
LNAV/VNAV DA	570-1¼		365 (400-1¼)	
LNAV MDA	820/55 615 (600-1)		820-1¾ 615 (600-1¾)	
<b>C</b> CIRCLING	820-1 598 (600-1)		840-1¾ 618 (700-1¾) 880-2 658 (700-2)	

SW-2, 25 FEB 2021 to 25 MAR 2021

SW-2, 25 FEB 2021 to 25 MAR 2021