


WAAS CH 61012 W18A	APP CRS 177°	Rwy Idg 6203 TDZE 1016 Apt Elev 1016
--	------------------------	---

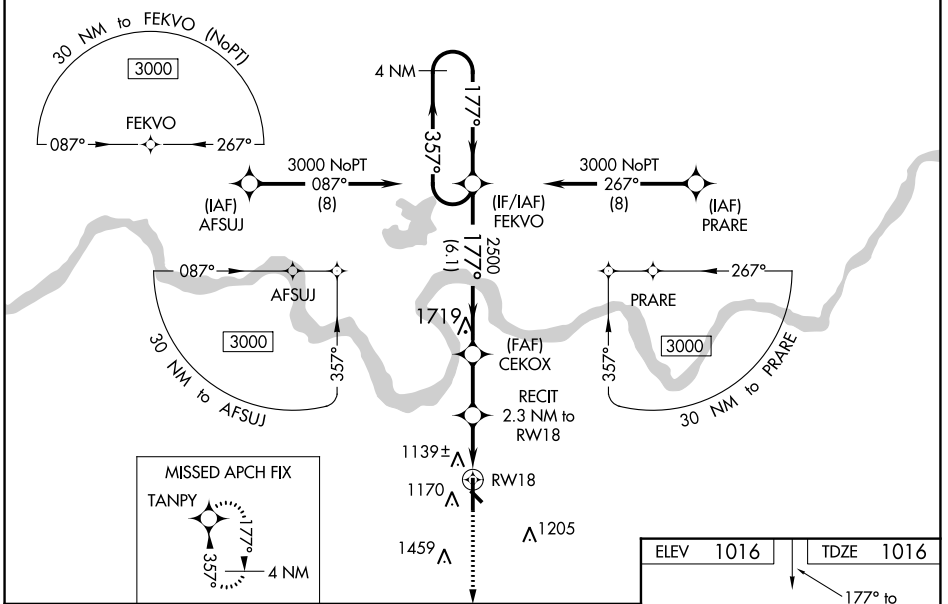
RNAV (GPS) RWY 18

ADA RGNL (ADH)

⚠ Inop table does not apply to LPV. For uncompensated Baro-VNAV systems, LNAV/VNAV NA below -17°C (2°F) or above 54°C (130°F). Baro-VNAV and VDP NA when using Seminole altimeter setting. Circling Rwy 31 NA at night. Rwy 18 helicopter visibility reduction below 3/4 SM NA. DME/DME RNP-0.3 NA. For inop ALS, increase LNAV/VNAV Cats A and B visibility 1/2 SM. For inop ALS when using Seminole altimeter setting; increase LPV all Cats visibility to 1 SM and LNAV/VNAV all Cats to 1/2 SM. When local altimeter setting not received, use Seminole altimeter setting: increase LPV DA to 1332 feet, LNAV/VNAV DA to 1386 and all MDA 80 feet. Increase LPV all Cats visibility 1/2 SM, increase LNAV/VNAV all Cats and LNAV Cat C and D visibility 1/2 SM. Increase Circling Cats C/D visibility 1/2 SM.

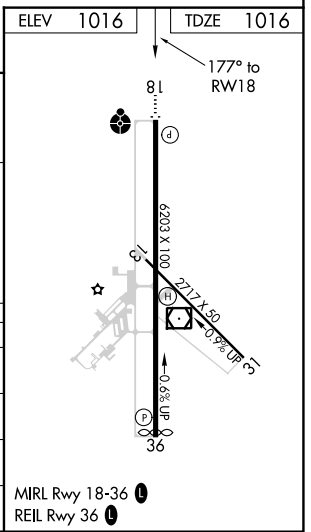
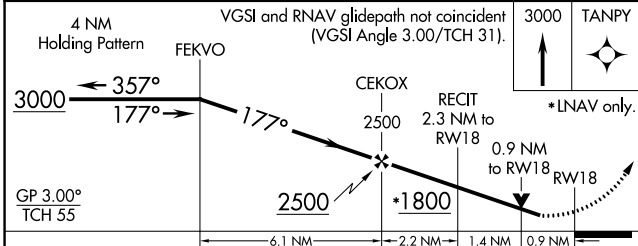
ODALS  **MISSED APPROACH:** Climb to 3000 direct TANPY and hold.

AWOS-3 118.725	FORT WORTH CENTER 132.2 338.35	UNICOM 122.8 (CTAF) 0
--------------------------	--	---------------------------------



SC-1, 25 FEB 2021 to 25 MAR 2021

SC-1, 25 FEB 2021 to 25 MAR 2021



CATEGORY	A	B	C	D
LPV DA		1266-3/4	250 (300-3/4)	
LNAV/VNAV DA		1320-7/8	304 (400-7/8)	
LNAV MDA	1400-3/4	384 (400-3/4)	1400-1	384 (400-1)
C CIRCLING	1520-1 504 (600-1)	1640-1 624 (700-1)	1820-2 1/4 804 (900-2 1/4)	1820-2 1/2 804 (900-2 1/2)