

WAAS CH 70412 W36A	APP CRS 357°	Rwy ldg 6103 TDZE 995 Apt Elev 1016
--	------------------------	--

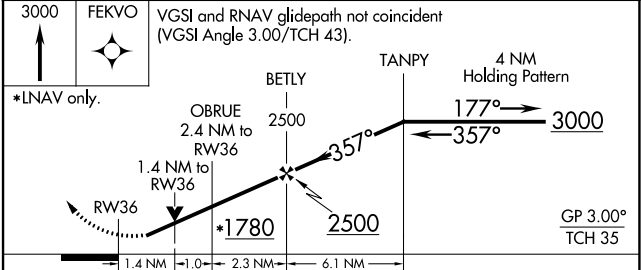
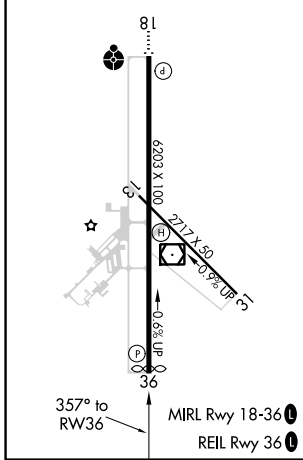
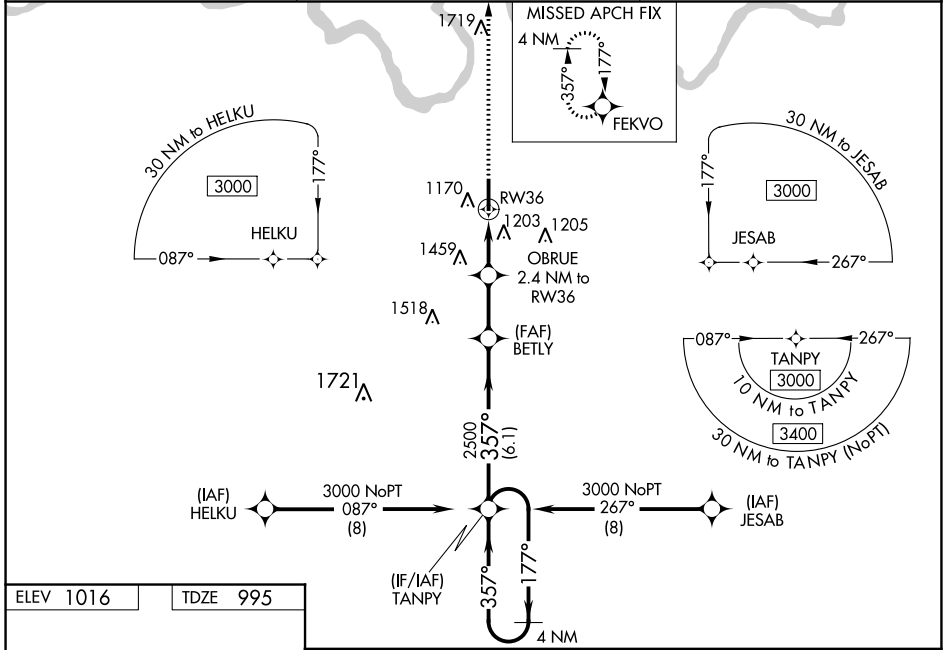
RNAV (GPS) RWY 36

ADA RGNL (ADH)

⚠ For uncompensated Baro-VNAV systems, LNAV/VNAV NA below -17°C (2°F) or above 54°C (130°F). Baro-VNAV and VDP NA when using Seminole altimeter setting. Circling Rwy 31 NA at night. Rwy 36 helicopter visibility reduction below 3/4 SM NA. DME/DME RNP-0.3 NA. When local altimeter setting not received, use Seminole altimeter setting: increase LPV DA to 1311 feet, LNAV/VNAV DA to 1600 feet and all MDA 80 feet. Increase LPV all Cats and LNAV Cats C and D visibility 1/2 SM, increase LNAV/VNAV all Cats visibility to 2 1/2 SM. Increase Circling Cats C/D visibility 1/2 SM.

MISSED APPROACH: Climb to 3000 direct FEKVO and hold.

AWOS-3 118.725	FORT WORTH CENTER 132.2 338.35	UNICOM 122.8 (CTAF) 0
--------------------------	--	---------------------------------



CATEGORY	A	B	C	D
LPV DA		1245-7/8	250 (300-7/8)	
LNAV/VNAV DA		1534-1 7/8	539 (600-1 7/8)	
LNAV MDA	1460-1	465 (500-1)	1460-1 3/8	465 (500-1 3/8)
<input checked="" type="checkbox"/> CIRCLING	1520-1 504 (600-1)	1640-1 624 (700-1)	1820-2 1/4 804 (900-2 1/4)	1820-2 1/2 804 (900-2 1/2)

SC-1, 25 FEB 2021 to 25 MAR 2021

SC-1, 25 FEB 2021 to 25 MAR 2021