

# ILS RWY 19R (CAT III)

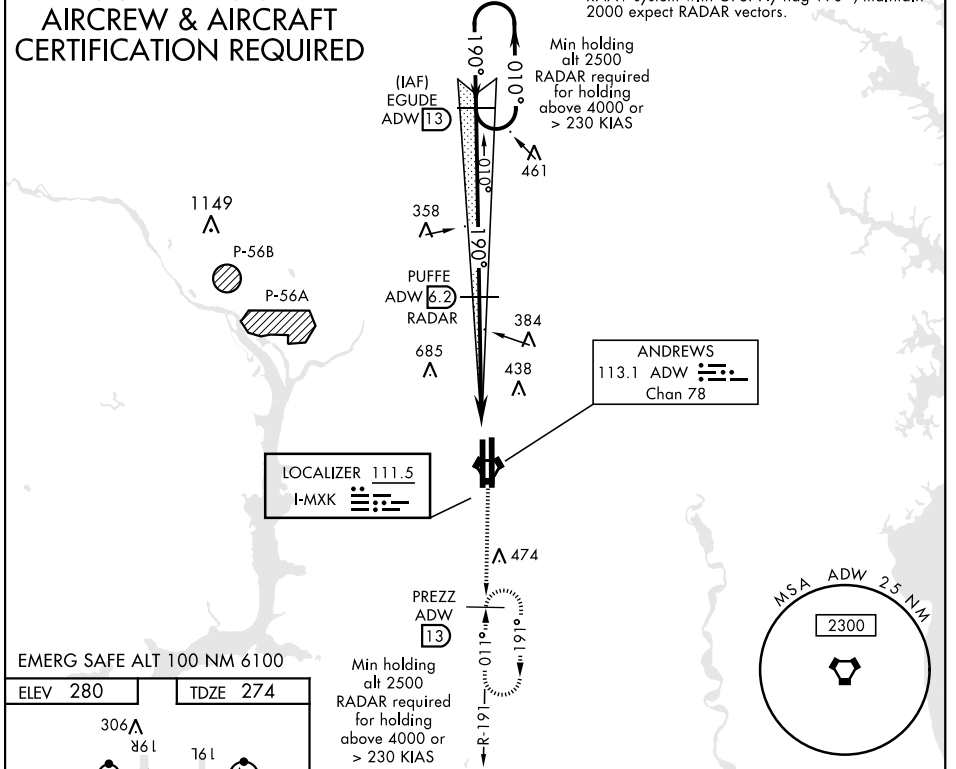
LOC I-MXK <b>111.5</b>	APCH CRS <b>190°</b>	Rwy Idg TDZE Arprt Elev <b>9318</b> <b>274</b> <b>280</b>	AL-561 [USAF]	JOINT BASE ANDREWS (KADW)
---------------------------	-------------------------	--	---------------	---------------------------

ATC RADAR or DME required.	ALSIF-2	† MISSED APPROACH: Climbing to 2500, intercept ADW VORTAC R-191 to PREZZ and hold.
----------------------------	---------	--

ATIS <b>133.675 251.05</b>	POTOMAC APP CON <b>128.0 335.5</b>	ANDREWS TOWER <b>118.4 349.0</b>	GND CON <b>121.8 275.8</b>	CLNC DEL <b>127.55 285.475</b>	CPDLC
-------------------------------	---------------------------------------	-------------------------------------	-------------------------------	-----------------------------------	-------

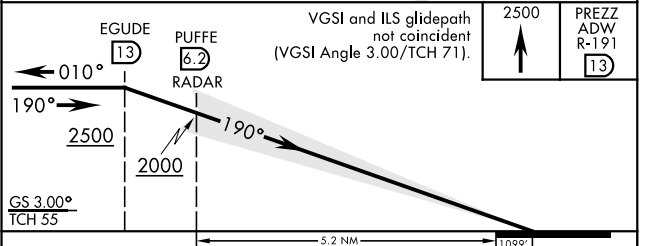
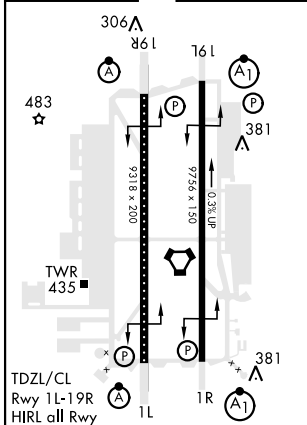
## CATEGORY III ILS-SPECIAL AIRCREW & AIRCRAFT CERTIFICATION REQUIRED

† For aircraft not equipped with TACAN or suitable RNAV system with GPS: Fly hdg 190°, maintain 2000 expect RADAR vectors.



EMERG SAFE ALT 100 NM 6100

ELEV 280	TDZE 274
----------	----------



CATEGORY	A	B	C	D	E
S-ILS 19R		CAT IIIa		RVR 07	
S-ILS 19R		CAT IIIb		RVR 06	
S-ILS 19R		CAT IIIc		NA	

# ILS RWY 19R (CAT III)

NE-3, 25 FEB 2021 to 25 MAR 2021

NE-3, 25 FEB 2021 to 25 MAR 2021