

CAMP SPRINGS, MARYLAND

ILS RWY 1L (CAT II)

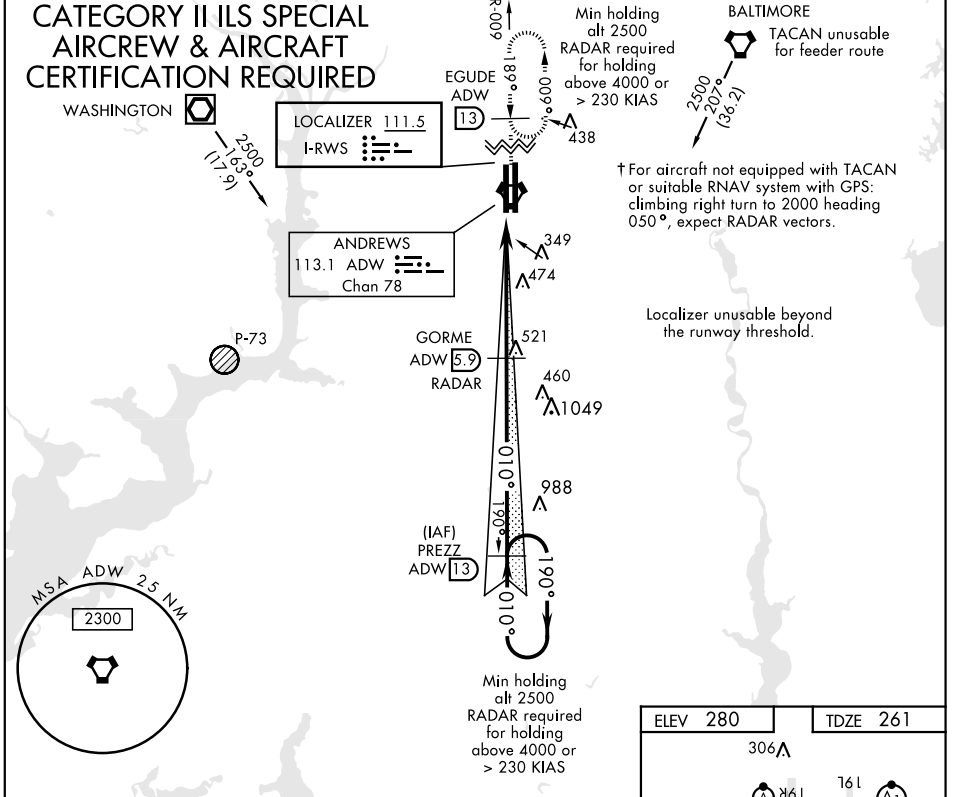
JOINT BASE ANDREWS (KADW)

LOC I-RWS 111.5	APCH CRS 010°	Rwy ldg TDZE Arprt Elev 9318 261 280	AL-561 [USAF]
---------------------------	-------------------------	--	---------------

RADAR or DME required. ALS-F-2		† MISSED APPROACH: Climbing to 2500, intercept ADW VORTAC R-009 to EGUDE and hold.		
-----------------------------------	--	--	--	--

ATIS 133.675 251.05	POTOMAC APP CON 128.0 335.5	ANDREWS TOWER 118.4 349.0	GND CON 121.8 275.8	CLNC DEL 127.55 285.475	CPDLC
-------------------------------	---------------------------------------	-------------------------------------	-------------------------------	-----------------------------------	-------

CATEGORY II ILS SPECIAL AIRCREW & AIRCRAFT CERTIFICATION REQUIRED

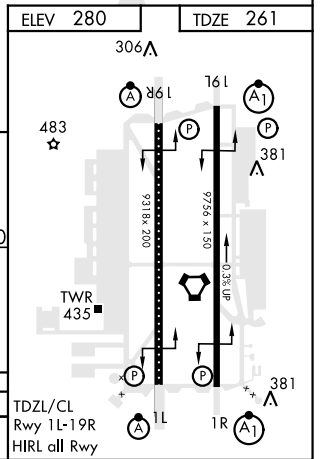
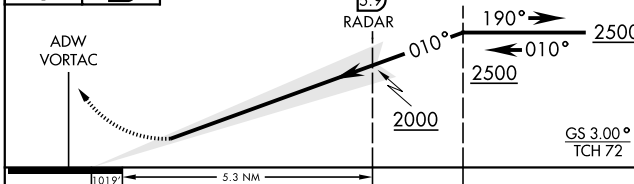


NE-3, 25 FEB 2021 to 25 MAR 2021

NE-3, 25 FEB 2021 to 25 MAR 2021

EMERG SAFE ALT 100 NM 6100

2500 ↑	EGUDE ADW R-009 13	VGSI and ILS glidepath not coincident [VGSI Angle 3.00/TCH 72].
--------	--------------------	---



CATEGORY	A	B	C	D	E
S-ILS 1L	RA 108/12		100	DA 361	