

CAMP SPRINGS, MARYLAND

ILS RWY 1L (CAT III)

LOC I-RWS 111.5	APCH CRS 010°	Rwy ldg TDZE Arpt Elev 9318 261 280
---------------------------	-------------------------	---

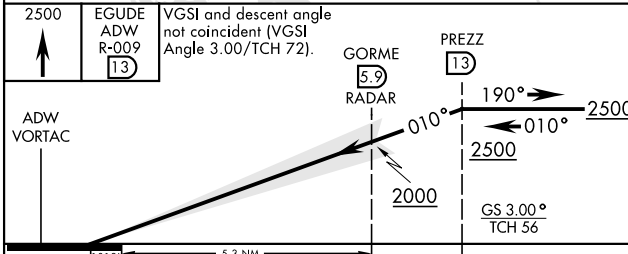
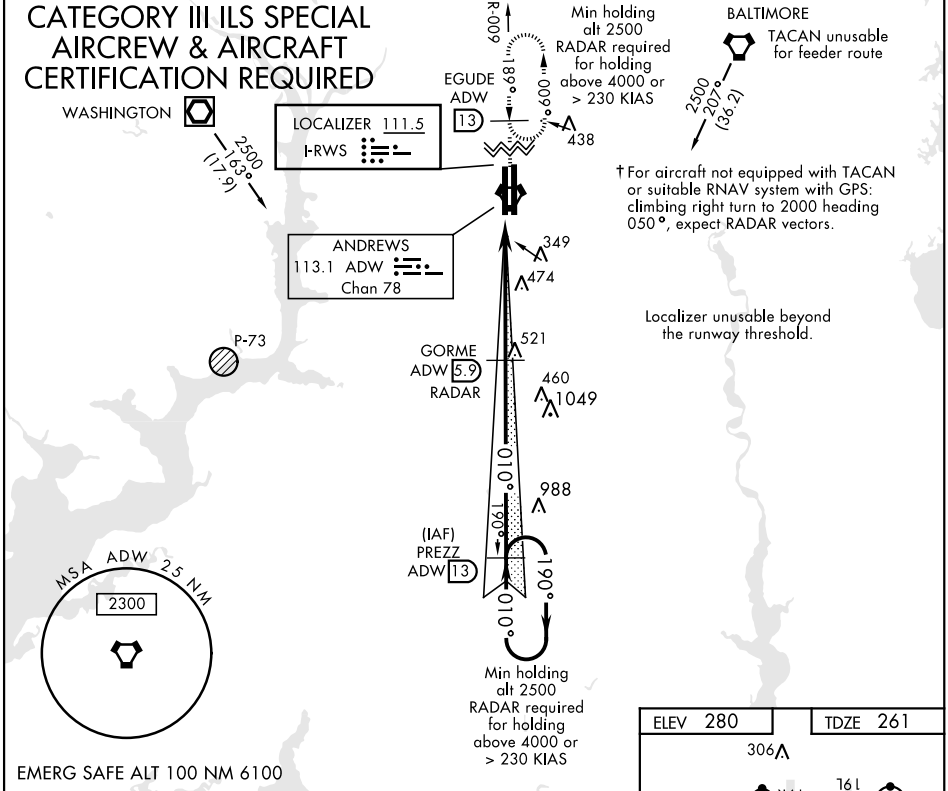
AL-561 [USAF]

JOINT BASE ANDREWS (KADW)

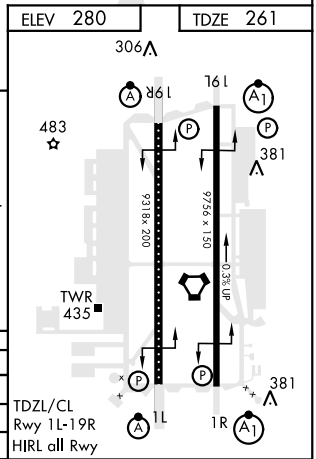
RADAR or DME required.		ALSIF-2	† MISSED APPROACH: Climbing to 2500, intercept ADW VORTAC R-009 to EGUDE and hold.		
------------------------	--	---------	--	--	--

ATIS 133.675 251.05	POTOMAC APP CON 128.0 335.5	ANDREWS TOWER 118.4 349.0	GND CON 121.8 275.8	CLNC DEL 127.55 285.475	CPDLC
-------------------------------	---------------------------------------	-------------------------------------	-------------------------------	-----------------------------------	-------

CATEGORY III ILS SPECIAL AIRCREW & AIRCRAFT CERTIFICATION REQUIRED



2500	EGUDE ADW R-009	VGS1 and descent angle not coincident (VGS1 Angle 3.00/TCH 72).	
↑	13	GORME 5.9 RADAR	PREZZ 13
ADW VORTAC		010°	190°
		2000	2500
		GS 3.00°	TCH 56
CATEGORY	A	B	C
S-ILS 1L	S-ILS 1L CAT IIIa		RVR 07
S-ILS 1L	S-ILS 1L CAT IIIb		RVR 06
S-ILS 1L	S-ILS 1L CAT IIIc		NA



CAMP SPRINGS, MARYLAND

38° 49' N-76° 52' W

JOINT BASE ANDREWS (KADW)

Amtd 2 05DEC19

ILS RWY 1L (CAT III)

NE-3, 25 FEB 2021 to 25 MAR 2021

NE-3, 25 FEB 2021 to 25 MAR 2021