

CAMP SPRINGS, MARYLAND

ILS or LOC RWY 19L

LOC I-GQZ 110.5	APCH CRS 190°	Rwy ldg TDZE Arprt Elev	9756 279 280
---------------------------	-------------------------	-------------------------------	---

AL-561 (USAF)

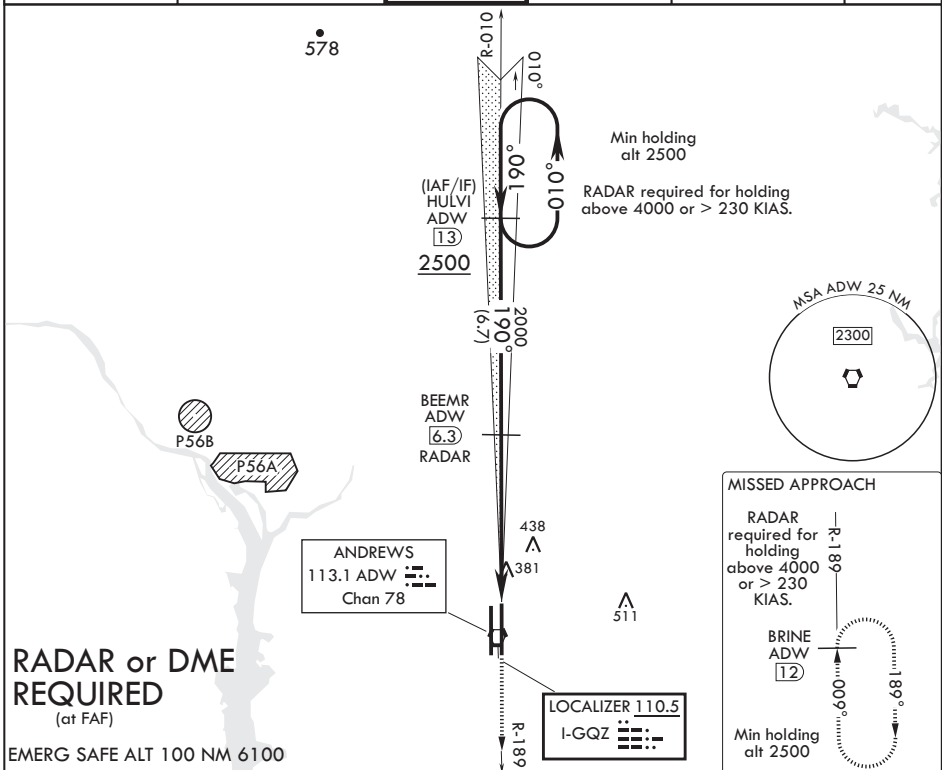
JOINT BASE ANDREWS (KADW)

▼ * When ALS inop, increase RVR to 40, vis to 3/4.
 ** When ALS inop, increase CAT A/B RVR to 55, vis to 1 mile;
 CAT C/D RVR to 60, vis to 1 1/8 mile.
 *** Circling not authorized W of Rwy 1L-19R.



MISSED APPROACH: Climb to 2500 via ADW R-189 to BRINE/ADW 12 DME and hold.

ATIS 133.675 251.05	POTOMAC APP CON 128.0 335.5	TOWER 118.4 349.0	GND CON 121.8 275.8	CLNC DEL 127.55 285.475	CPDLC
-------------------------------	---------------------------------------	-----------------------------	-------------------------------	-----------------------------------	-------



NE-3, 25 FEB 2021 to 25 MAR 2021

NE-3, 25 FEB 2021 to 25 MAR 2021

	HULVI 13	BEEMR 6.3 RADAR	2500 ADW R-189	BRINE ADW 12	ELEV 280	TDZE 279
	2500	190°	190°	190°	190° 5.2NM from FAF	BCN 483
	2000	2000	2000	2000	9218 x 200	TWR 435
	5.2 NM	0.1	0.1	0.1	9736 x 150	11L 1R
CATEGORY	A	B	C	D	E	
S-ILS 19L*		479/24	200	(200-1/2)		
S-LOC 19L**	680/24	401 (400-1/2)	680/40	401 (400-3/4)		
CIRCLING***	780-1	500 (500-1)	780-1 1/2	500 (500-1 1/2)	840-2	560 (600-2)
	FAF to MAP 5.2 NM					
	Knots	60	90	120	150	180
	Min:Sec	5:12	3:28	2:36	2:05	1:44

CAMP SPRINGS, MARYLAND

38°49'N - 76°52'W

JOINT BASE ANDREWS (KADW)

Orig 15AUG19

ILS or LOC RWY 19L