

CAMP SPRINGS, MARYLAND

ILS or LOC RWY 19R

LOC I-MXK 111.5	APCH CRS 190°	Rwy Idg 9318
		TDZE 274
		Arprt Elev 280

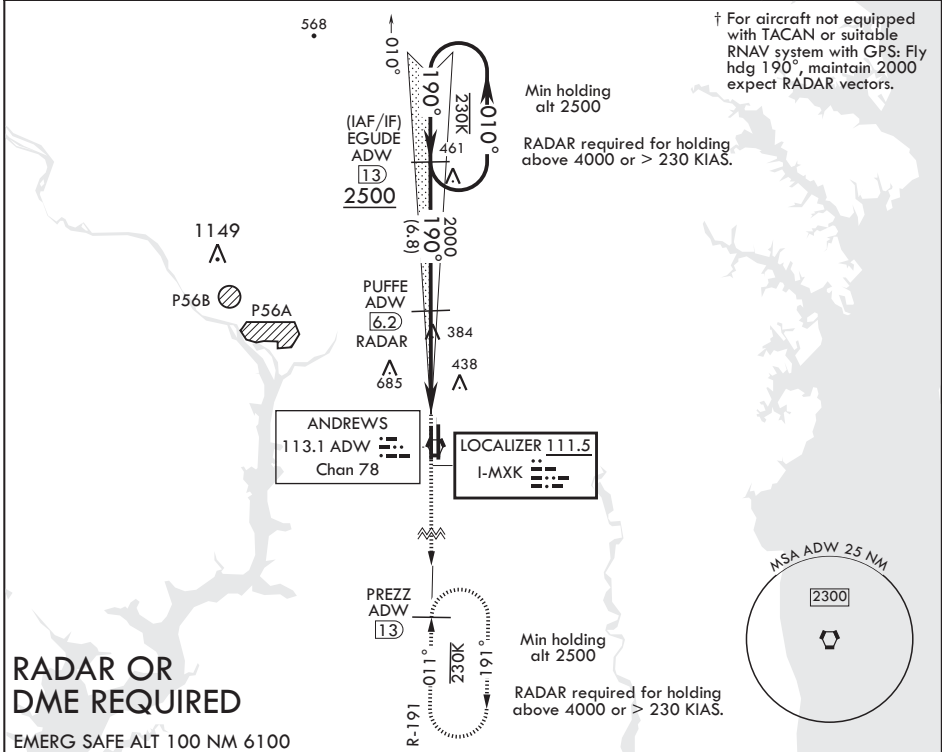
AL-561 (USAF)

JOINT BASE ANDREWS (KADW)

⚠ * When ALS inop, increase RVR to 40, vis to 3/4 mile.
When TDZL/CL inop, increase RVR to 24.
** When ALS inop, increase CAT AB RVR to 55, vis to 1 mile,
CAT CDE RVR to 60, vis to 1 1/8 miles.
*** Circling NA West of Rwy 1L-19R.

ALS-F-2
† MISSED APPROACH: Climb to 2500, intercept ADW VORTAC R-191 to PREZZ and hold.

ATIS 133.675 251.05	POTOMAC APP CON 128.0 335.5	TOWER 118.4 349.0	GND CON 121.8 275.8	CLNC DEL 127.55 285.475	CPDLC
-------------------------------	---------------------------------------	-----------------------------	-------------------------------	-----------------------------------	-------



VGSi and ILS glidepath not coincident (VGSi Angle 3.00/TCH 71). GS 3.00° TCH 55	ELEV 280		TDZE 274		
	2500 ADW R-191		PREZZ ADW (13)		
2500 ← 010° 190° →	EGUDE (13)	PUFFE (6.2) RADAR	† LOC only	VORTAC	
2000	4.7 NM	BARLE (1.5)	0.5	430 A	
CATEGORY	A	B	C	D	E
S-ILS 19R*	474/18		200	(200-1/2)	
S-LOC 19R**	660/24	386 (400-1/2)	660/35	386	(400-5/8)
CIRCLING***	780-1	500 (500-1)	780-1 1/2 500 (500-1 1/2)	840-2	560 (600-2)
HIRL all Rwys TDZL/CL Rwys 1L, 19R					
FAF to MAP 4.7 NM					
Knots	60	90	120	150	180
Min:Sec	4:42	3:08	2:21	1:53	1:34

CAMP SPRINGS, MARYLAND

38°49'N - 76°52'W

JOINT BASE ANDREWS (KADW)

Amdt 3 15AUG19

ILS or LOC RWY 19R

NE-3, 25 FEB 2021 to 25 MAR 2021

NE-3, 25 FEB 2021 to 25 MAR 2021