

CAMP SPRINGS, MARYLAND

ILS or LOC RWY 1L

LOC I-RWS 111.5	APCH CRS 010°	Rwy Idg 9318
		TDZE 261
		Arprt Elev 280

AL-561 (USAF)

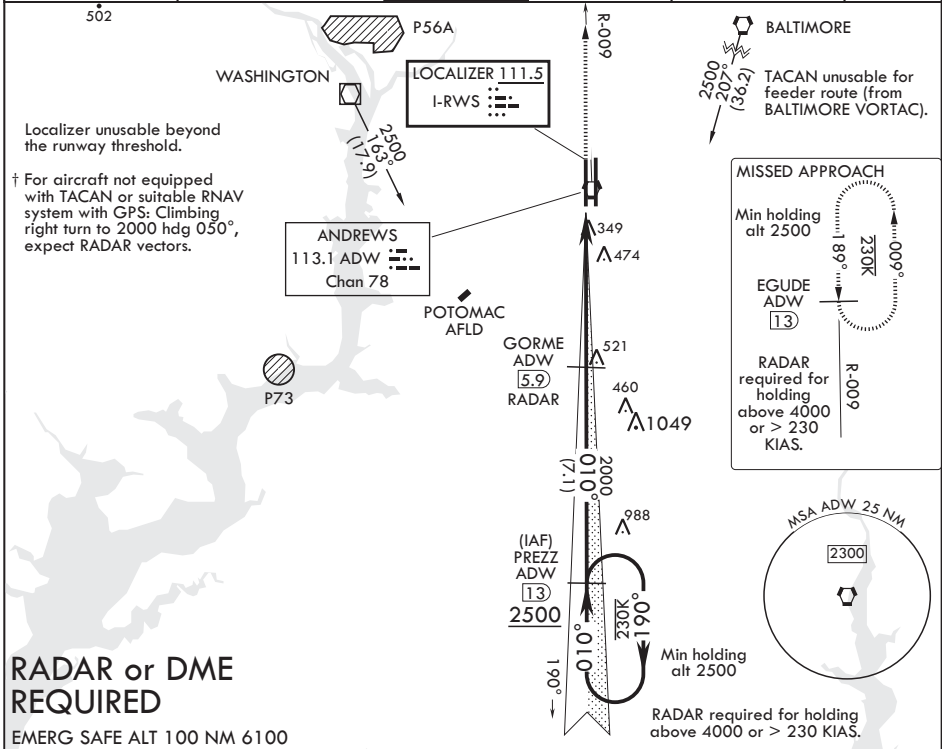
JOINT BASE ANDREWS (KADW)

⚠ MISSED APPROACH: Climbing to 2500, intercept ADW VORTAC R-009 to EGUDE and hold.

ALS-2

* When ALS inop increase RVR to 40, vis to 3/4 mile. When TDZL/CL inop, increase RVR to 24.
 ** When ALS inop, increase CAT AB RVR to 55, vis to 1 mile, CAT CDE RVR to 60, vis to 1 1/8 miles.
 *** Circling not authorized W of Rwy 1L-19R.

ATIS 133.675 251.05	POTOMAC APP CON 128.0 335.5	TOWER 118.4 349.0	GND CON 121.8 275.8	CLNC DEL 127.55 285.475	CPDLC
-------------------------------	---------------------------------------	-----------------------------	-------------------------------	-----------------------------------	-------



RADAR or DME REQUIRED

EMERG SAFE ALT 100 NM 6100

2500 ← 190° 010° → VGS1 and ILS glidepath not coincident (VGS1 Angle 3.00/TCH 72). GS 3.00° TCH 56	PREZZ 13		GORME 5.9 RADAR		2500 ADW R-009	EGUDE ADW 13	ELEV 280	TDZE 261
	2000 ‡ LOC only ‡ 1.7 VORTAC GUTRE 8 -5.1 NM 0.2							
CATEGORY	A	B	C	D	E			
S-ILS 1L*	461/18		200	(200-1/2)				
S-LOC 1L**	680/24	419 (400-1/2)	680/40	419	(400-3/4)			
C CIRCLING***	780-1	500 (500-1)	780-1 1/2 500 (500-1 1/2)	840-2	560 (600-2)			
						HIRL all Rwys TDZL/CL Rwys 1L, 19R FAF to MAP 5.1 NM Knots 60 90 120 150 180 Min:Sec 5:06 3:24 2:33 2:02 1:42		

CAMP SPRINGS, MARYLAND

38°49'N - 76°52'W

JOINT BASE ANDREWS (KADW)

Amdt 4 15AUG19

ILS or LOC RWY 1L

NE-3, 25 FEB 2021 to 25 MAR 2021

NE-3, 25 FEB 2021 to 25 MAR 2021