

CAMP SPRINGS, MARYLAND

RNAV (GPS) RWY 19L

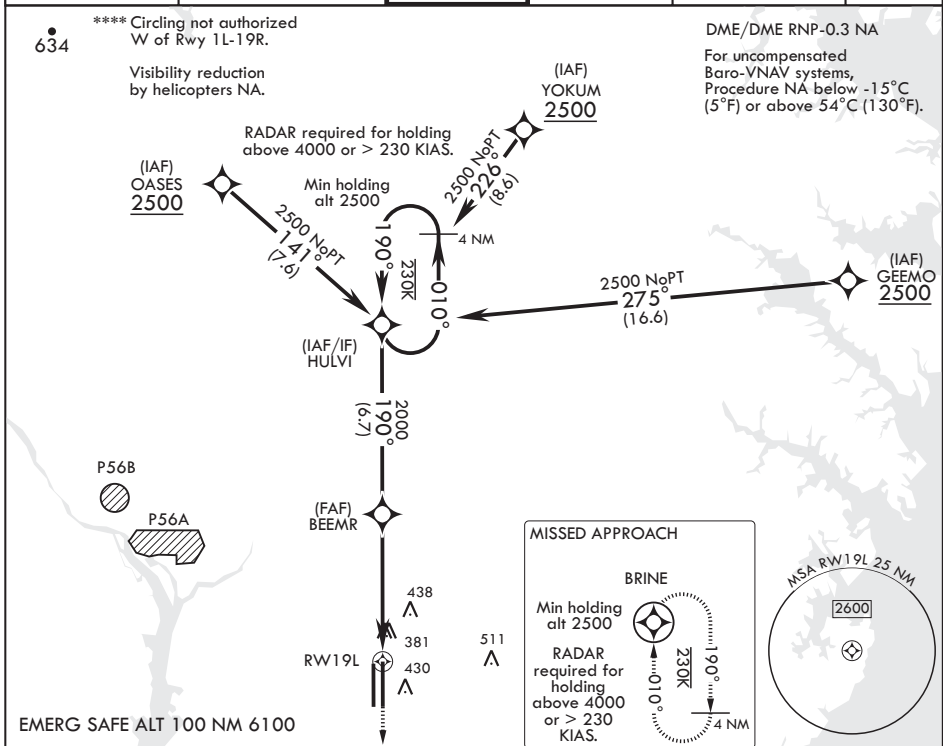
WAAS CH 52203 W19A	APCH CRS 190°	Rwy ldg TDZE 279	9756 279 280
--------------------------	------------------	------------------------	--------------------

AL-561 (USAF)

JOINT BASE ANDREWS (KADW)

<p>▼ *** Circling not authorized W of Rwy 1L-19R.</p> <p>*** When ALS inop, increase RVR to 40, vis to 3/4 mile. *** When ALS inop, increase CAT AB RVR to 55, vis to 1 mile; CAT CDE RVR to 60, vis to 1 1/8 miles.</p>	<p>ALS-1</p>	<p>MISSED APPROACH: Climb to 2500 direct BRINE and hold.</p>
---	--------------	--

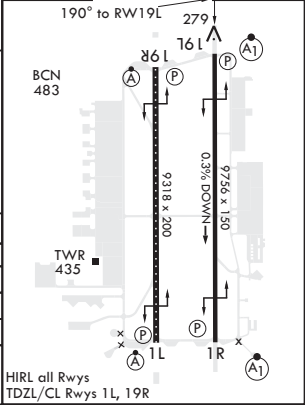
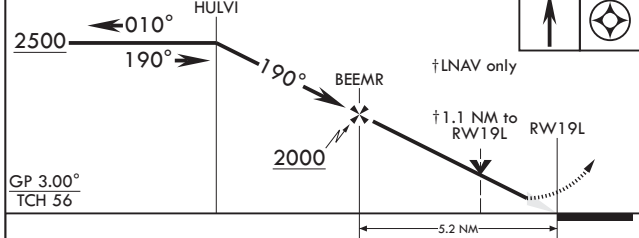
ATIS 133.675 251.05	POTOMAC APP CON 128.0 335.5	TOWER 118.4 349.0	GND CON 121.8 275.8	CLNC DEL 127.55 285.475	CPDLC
------------------------	--------------------------------	----------------------	------------------------	----------------------------	-------



NE-3, 25 FEB 2021 to 25 MAR 2021

NE-3, 25 FEB 2021 to 25 MAR 2021

EMERG SAFE ALT 100 NM 6100	2500	BRINE	ELEV 280	TDZE 279
----------------------------	------	-------	----------	----------



CATEGORY	A	B	C	D	E
LPV DA*	479/24		200	(200-1/2)	
RNAV/VNAV DA**	680/40		401	(400-3/4)	
RNAV MDA***	680/24	401 (400-1/2)	680/40	401	(400-3/4)
C CIRCLING****	780-1	500 (500-1)	780-1 1/2 500 (500-1 1/2)	840-2	560 (600-2)

CAMP SPRINGS, MARYLAND
Orig 15AUG19

38°49'N - 76°52'W

JOINT BASE ANDREWS (KADW)

RNAV (GPS) RWY 19L

HIRL all Rwys
TDZL/CL Rwys 1L, 19R