

CAMP SPRINGS, MARYLAND

RNAV (GPS) RWY 19R

WAAS CH 52204 W19B	APCH CRS 190°	Rwy ldg TDZE Arprt Elev	9318 274 280
--------------------------	------------------	-------------------------------	--------------------

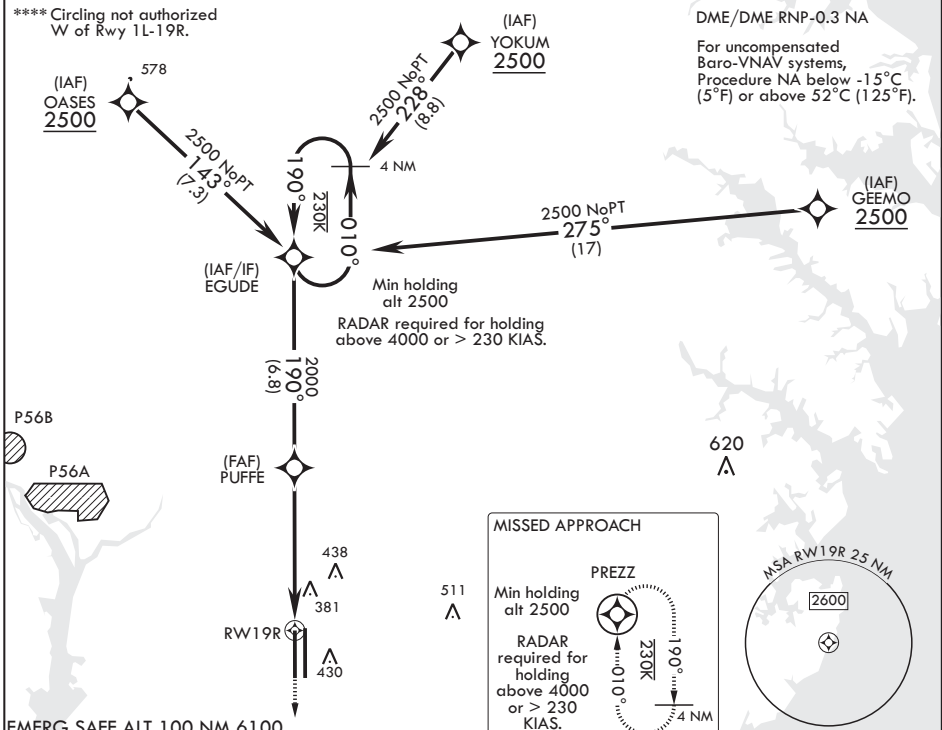
AL-561 (USAF)

JOINT BASE ANDREWS (KADW)

V * When ALS inop, increase RVR to 40, vis to 3/4. When TDZ/CL lights inop, increase RVR to 24.
 ** When ALS inop, increase vis to 1 1/4 miles.
 *** When ALS inop, increase CAT AB RVR to 55, vis to 1 mile; CAT CDE vis to 1 1/4 miles.

ALSF-2 MISSED APPROACH: Climb to 2500 direct PREZZ and hold.

ATIS 133.675 251.05	POTOMAC APP CON 128.0 335.5	TOWER 118.4 349.0	GND CON 121.8 275.8	CLNC DEL 127.55 285.475	CPDLC
------------------------	--------------------------------	----------------------	------------------------	----------------------------	-------



NE-3, 25 FEB 2021 to 25 MAR 2021

NE-3, 25 FEB 2021 to 25 MAR 2021

GP 3.00° TCH 55 CATEGORY LPV DA* LNAV/VNAV DA** LNAV MDA*** C CIRCLING****	EGUDE		VGSI and RNAV glidepath not coincident (VGSI Angle 3.00/TCH 70.62).			2500	PREZZ	ELEV 280	TDZE 274
	2500		PUFFE		RWY 19R				
	190°		190°		190°		190° to RWY 19R 36L 16L 9318 x 200 0.3° P/D M/N 15R		
	2000		11.1 NM to RWY 19R		5.2 NM		BCN 483 TWR 435 1L 1R		
	A		B		C		D		E
474/18		200		(200-1/2)					
697/40		423		(500-3/4)					
700/24 426 (500-1/2)		700/40 426 (500-3/4)							
780-1 500 (500-1)		780-1 1/2 500 (500-1 1/2)		840-2 560 (600-2)		HIRL all Rwys TDZL/CL Rwys 1L, 19R			

CAMP SPRINGS, MARYLAND

38°49'N - 76°52'W

JOINT BASE ANDREWS (KADW)

Orig 15AUG19

RNAV (GPS) RWY 19R