

CAMP SPRINGS, MARYLAND

# RNAV (GPS) RWY 1R

WAAS CH 52206 W01B	APCH CRS 010°	Rwy ldg TDZE Arprt Elev	9756 265 280
--------------------------	------------------	-------------------------------	--------------------

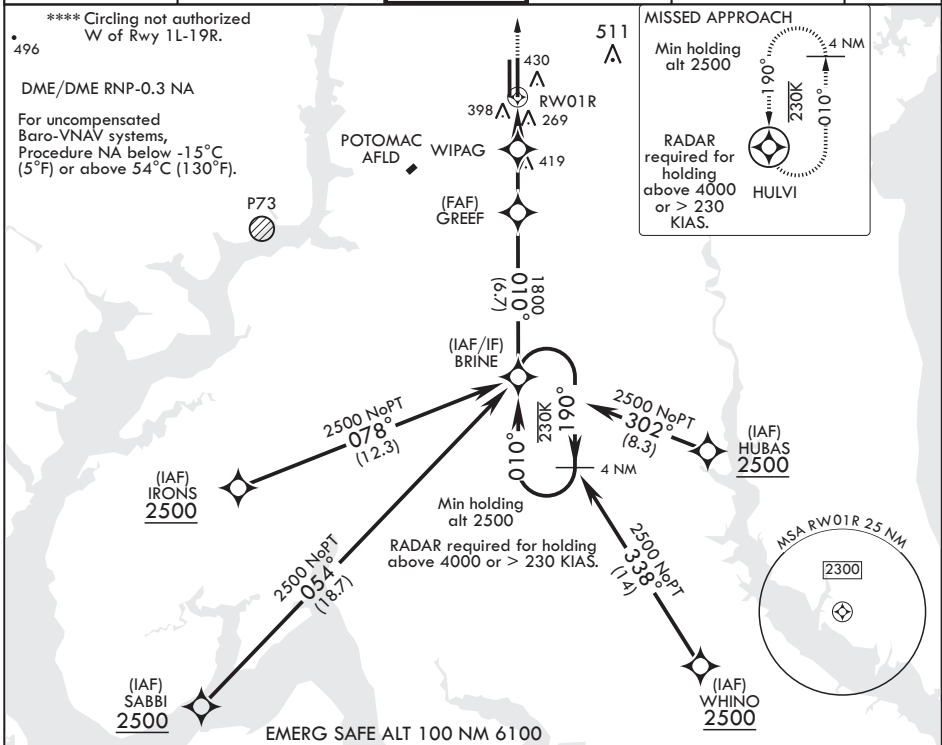
AL-561 (USAF)

JOINT BASE ANDREWS (KADW)

▼ \* When ALS inop increase RVR to 40, vis to 3/4 mile.  
 \*\* When ALS inop, increase RVR to 60, vis to 1 1/8 miles.  
 \*\*\* When ALS inop, increase CAT AB RVR to 55, vis to 1 mile;  
 CAT CDE RVR to 60, vis to 1 1/8 miles.

ALSF-1 MISSED APPROACH: Climb to 2500 direct HULVI and hold.

ATIS 133.675 251.05	POTOMAC APP CON 128.0 335.5	TOWER 118.4 349.0	GND CON 121.8 275.8	CLNC DEL 127.55 285.475	CPDLC
------------------------	--------------------------------	----------------------	------------------------	----------------------------	-------



BRINE	VGSI and RNAV glidepath not coincident (VGSI Angle 3.00/TCH 61).	2500	HULVI	ELEV 280	TDZE 265
2500	190°	010°	1800	190°	010°
GP 3.00° TCH 47	GREEF	WIPAG	1.1 NM to RWY 01R	RWY 01R	2500
		2.6 NM	2.1 NM		
CATEGORY	A	B	C	D	E
LPV DA*	465/24		200	(200-1/2)	
RNAV/VNAV DA**	660/35		395	(400-5/8)	
RNAV MDA***	660/24 395 (400-1/2)		660/35 395 (400-5/8)		
CIRCLING****	780-1 500 (500-1)		780-1 1/2 500 (500-1 1/2)	840-2 560 (600-2)	

BCN 483  
 TWR 435  
 196  
 9318 x 200  
 9756 x 150  
 0.3% UP  
 252  
 1R  
 010° to RWY 01R  
 HIRL all Rwy's TDZL/CL Rwy's 1L, 19R

CAMP SPRINGS, MARYLAND

38°49'N - 76°52'W

JOINT BASE ANDREWS (KADW)

Amdt 2 10OCT19

# RNAV (GPS) RWY 1R

NE-3, 25 FEB 2021 to 25 MAR 2021

NE-3, 25 FEB 2021 to 25 MAR 2021