

CAMP SPRINGS, MARYLAND

TACAN RWY 19L

VORTAC ADW 113.1 Chan 78	APCH CRS 195°	Rwy ldg TDZE 279 Arpt Elev 280	9756
--------------------------------	------------------	---	------

AL-561 (USAF)

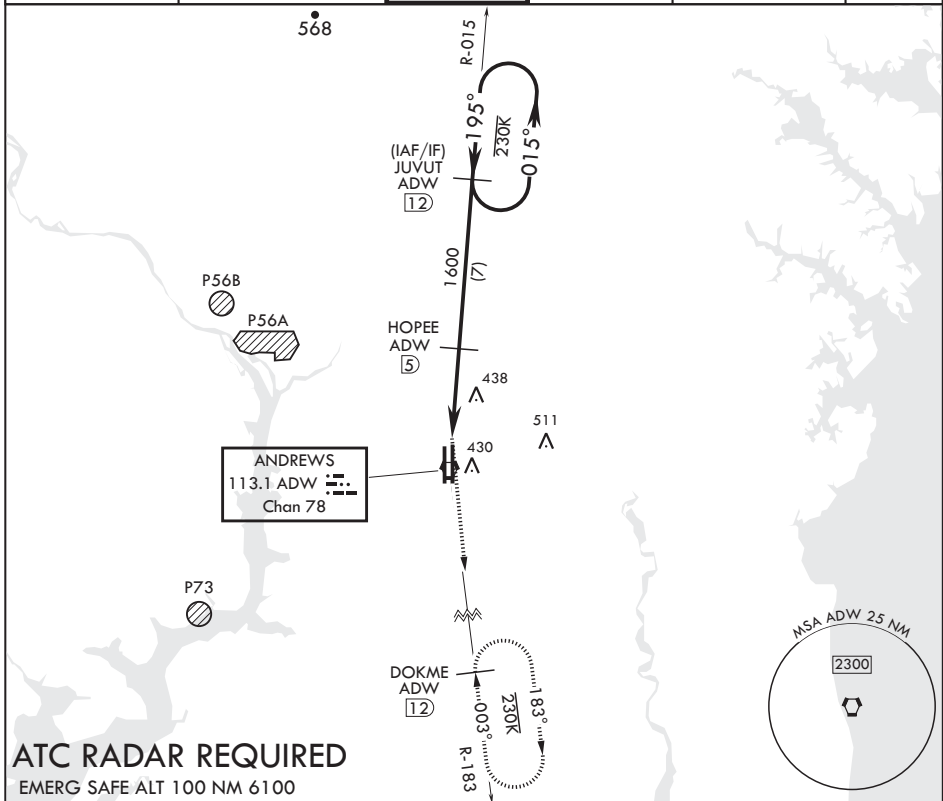
JOINT BASE ANDREWS (KADW)

⚠ * When ALS inop, increase CAT AB RVR to 55, vis to 1 mile, CAT CDE vis to 1 3/8 miles.
 ** Circling not authorized W of Rwy 1L-19R.



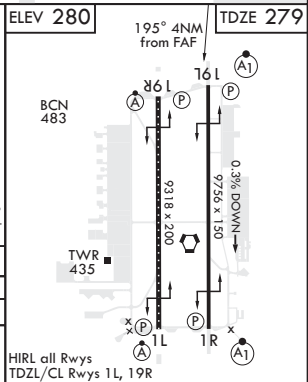
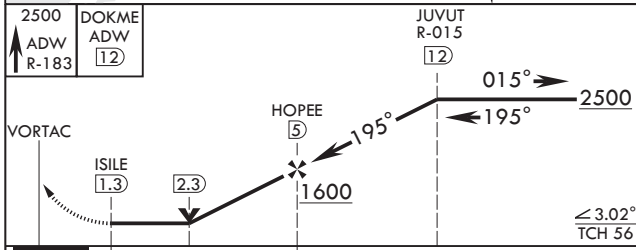
MISSED APPROACH: Climbing to 2500 via ADW VORTAC R-183 to DOKME and hold.

ATIS 133.675 251.05	POTOMAC APP CON 128.0 335.5	TOWER 118.4 349.0	GND CON 121.8 275.8	CLNC DEL 127.55 285.475	CPDLC
------------------------	--------------------------------	----------------------	------------------------	----------------------------	-------



ATC RADAR REQUIRED

EMERG SAFE ALT 100 NM 6100



CATEGORY	A	B	C	D	E
S-19L*	740/24 461 (500-1/2)		740/50	461 (500-1)	
C CIRCLING**	780-1 501 (600-1)		780-1/2 501 (600-1/2)	840-2 561 (600-2)	

CAMP SPRINGS, MARYLAND
Amdt 2 02MAR17

38°49'N - 76°52'W

JOINT BASE ANDREWS (KADW)

TACAN RWY 19L

NE-3, 25 FEB 2021 to 25 MAR 2021

NE-3, 25 FEB 2021 to 25 MAR 2021