

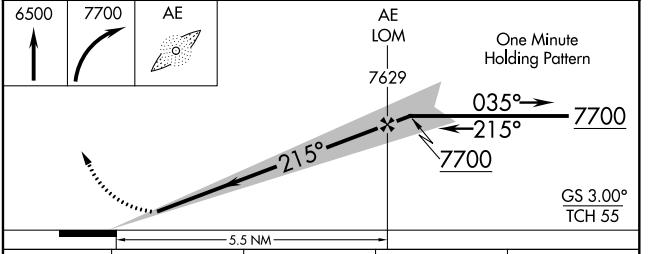
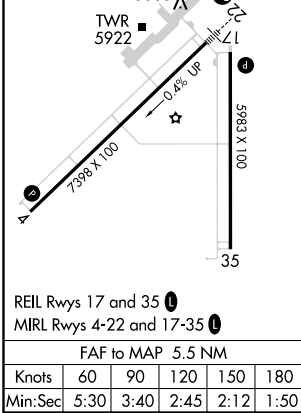
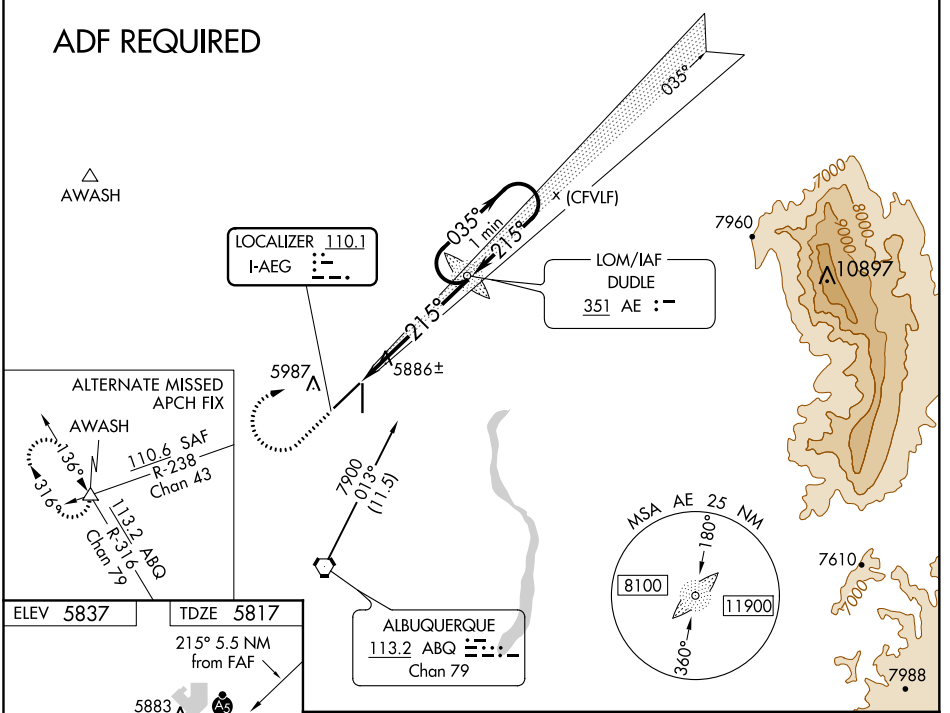
LOC I-AEG 110.1	APP CRS 215°	Rwy Idg 7398 TDZE 5817 Apt Elev 5837
---------------------------	------------------------	--

ILS or LOC RWY 22

DOUBLE EAGLE II (A/E/G)

<p>NA Autopilot coupled approach NA. When local altimeter setting not received, use Albuquerque Intl Support altimeter setting and increase all DA 94 feet, increase all MDA 100 feet, and increase visibility S-LOC 22 Cats C/D 1/4 mile, Circling Cats C/D 1/2 mile. For inop MALSRS when using Albuquerque Intl Support altimeter setting, increase visibility S-ILS 22 all Cats 3/8 mile.</p>		<p>MALSRS</p>	<p>MISSED APPROACH: Climb to 6500 then climbing right turn 7700 direct DUDLE LOM and hold.</p>	
<p>AWOS-3PT 119.025</p>	<p>ALBUQUERQUE APP CON 127.4 253.5</p>	<p>DOUBLE EAGLE II TOWER * 120.15 (CTAF)</p>	<p>GND CON 121.625</p>	<p>CLNC DEL 124.8 (When twr closed)</p>

ADF REQUIRED



CATEGORY	A	B	C	D
S-ILS 22	6017-1/2 200 (200-1/2)			
S-LOC 22	6140-1/2 323 (400-1/2)			
<input checked="" type="checkbox"/> CIRCLING	6400-1 563 (600-1)	6420-1 1/2 583 (600-1 1/2)		6640-2 1/2 803 (900-2 1/2)

SW-1, 25 FEB 2021 to 25 MAR 2021

SW-1, 25 FEB 2021 to 25 MAR 2021