

LOC I-ERJ <b>110.1</b>	APP CRS <b>141°</b>	Rwy Idg <b>9352</b> TDZE <b>85</b> Apt Elev <b>89</b>
---------------------------	------------------------	---

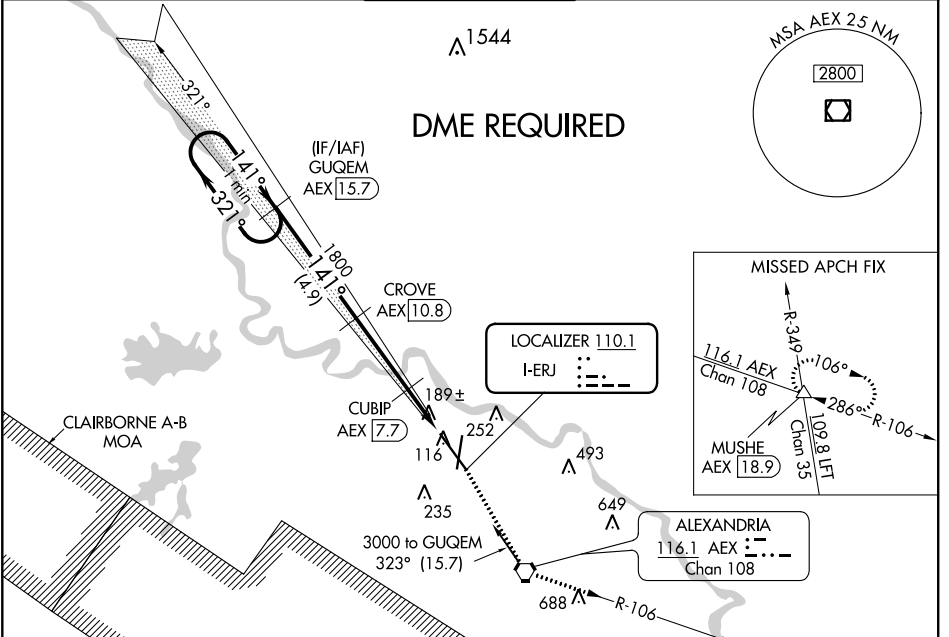
# ILS or LOC RWY 14

ALEXANDRIA INTL (AEX)

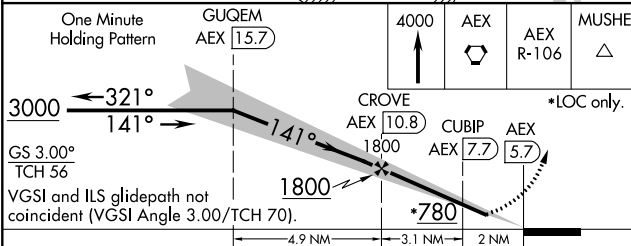
▼ DME from AEX VORTAC. Simultaneous reception of I-ERJ and AEX DME required. When R-3801 B active, RADAR and DME required. DME required. \*\* RVR 1800 authorized with use of FD or AP or HUD to DA.

SSALR MISSED APPROACH: Climb to 4000 direct AEX VORTAC and on AEX VORTAC R-106 to MUSHE INT/18.9 DME and hold.

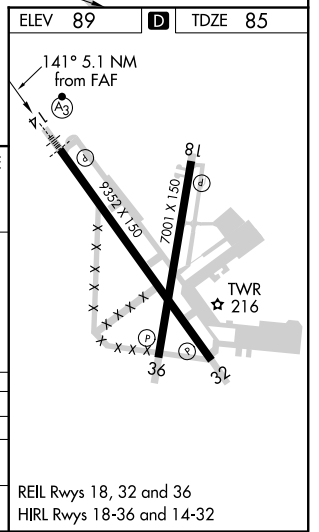
ASOS <b>123.975</b>	POLK APP CON <b>125.4 254.8</b>	ALEXANDRIA TOWER <b>127.35 (CTAF) 269.2</b>	GND CON <b>121.9 372.0</b>	CLNC DEL <b>121.9</b>
------------------------	------------------------------------	--	-------------------------------	--------------------------



One Minute Holding Pattern	GUGEM AEX 15.7	4000	AEX	AEX R-106	MUSHE
----------------------------	----------------	------	-----	-----------	-------



CATEGORY	A	B	C	D
S-ILS 14 **	285/24		200 (200-½)	
S-LOC 14	460/24		375 (400-½)	
CIRCLING	540-1	560-1	560-1½	640-2
	451 (500-1)	471 (500-1)	471 (500-1½)	551 (600-2)



SC-4, 25 FEB 2021 to 25 MAR 2021

SC-4, 25 FEB 2021 to 25 MAR 2021