

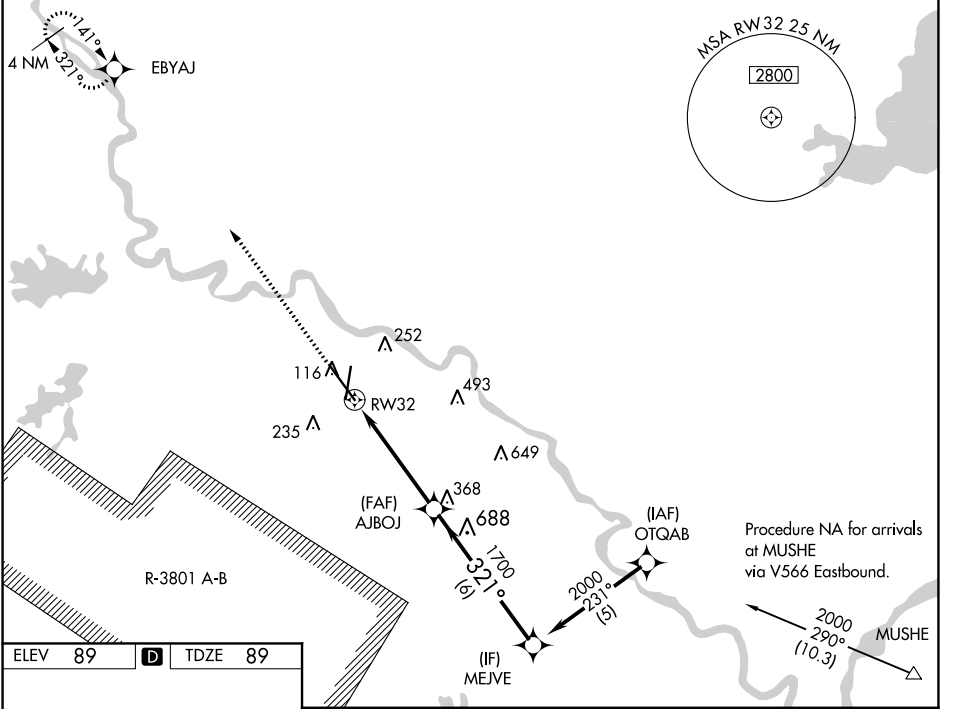
WAAS CH <b>50110</b> <b>W32A</b>	APP CRS <b>321°</b>	Rwy Idg <b>9352</b> TDZE <b>89</b> Apt Elev <b>89</b>
--	------------------------	---

# RNAV (GPS) RWY 32

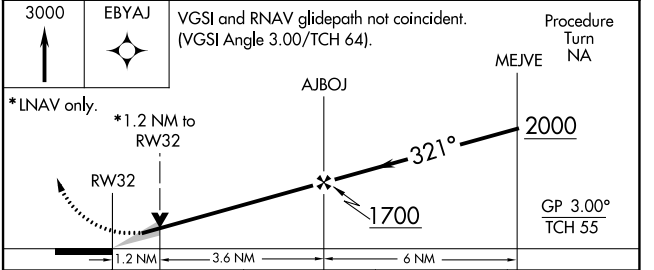
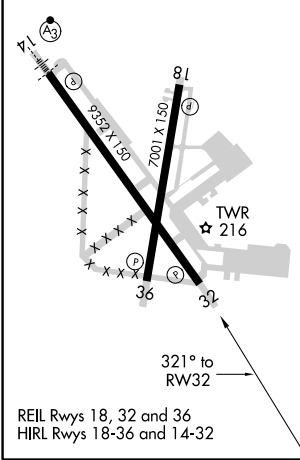
ALEXANDRIA INTL (AEX)

<p><b>▼</b> DME/DME RNP-0.3 NA. Baro-VNAV NA below -1.5°C (5°F) When R-3801A-B active, RADAR required.</p>	<p>MISSED APPROACH: Climb to 3000 direct EBYAJ WP and hold.</p>
--	---

ASOS <b>123.975</b>	POLK APP CON <b>125.4 254.8</b>	ALEXANDRIA TOWER <b>127.35 (CTAF) 269.2</b>	GND CON <b>121.9 372.0</b>	CLNC DEL <b>121.9</b>
------------------------	------------------------------------	--	-------------------------------	--------------------------



ELEV <b>89</b>	<b>D</b>	TDZE <b>89</b>
----------------	----------	----------------



CATEGORY	A	B	C	D
LPV DA		340/50	251 (300-1)	
LNAV/VNAV DA		460/60	371 (400-1¼)	
LNAV MDA	520/50	431 (500-1)	520/60 431 (500-1¼)	520-1½ 431 (500-1½)
CIRCLING	540-1¼ 451 (500-1¼)	560-1¼ 471 (500-1¼)	560-1½ 471 (500-1½)	640-2 551 (600-2)

SC-4, 25 FEB 2021 to 25 MAR 2021

SC-4, 25 FEB 2021 to 25 MAR 2021