

WAAS CH 58100 W36A	APP CRS 006°	Rwy Idg 7001 TDZE 87 Apt Elev 89
--	------------------------	---

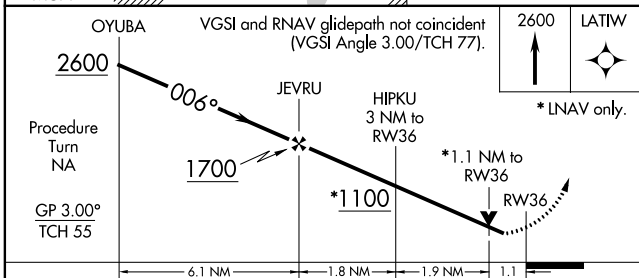
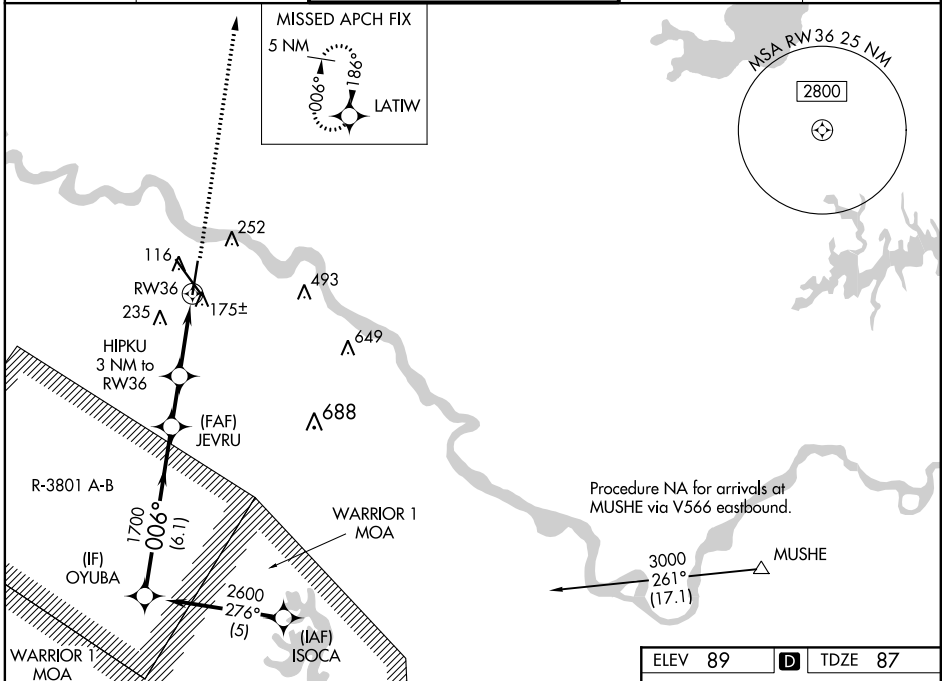
RNAV (GPS) RWY 36

ALEXANDRIA INTL (AEX)

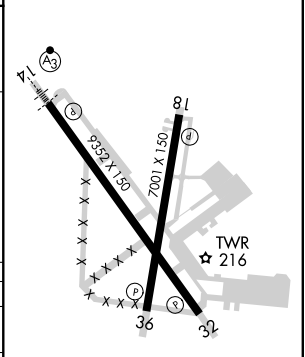
▼ DME/DME RNP-0.3 NA. When R-3801 A-B in use, procedure NA. For uncompensated Baro-VNAV systems, LNAV/VNAV NA below -15°C (5°F) or above 48°C (119°F). Rwy 36 helicopter visibility reduction below ¾ SM NA.

MISSED APPROACH: Climb to 2600 direct LATIW and hold.

ASOS 123.975	POLK APP CON 125.4 254.8	ALEXANDRIA TOWER 127.35 (CTAF) 269.2	GND CON 121.9 372.0	CLNC DEL 121.9
------------------------	------------------------------------	---	-------------------------------	--------------------------



ELEV 89	D	TDZE 87
---------	----------	---------



CATEGORY	A	B	C	D
LPV DA	391-1 304 (400-1)			
LNAV/VNAV DA	425-1¼ 338 (400-1¼)			
LNAV MDA	500-1 413 (500-1)	500-1¼ 413 (500-1¼)		
CIRCLING	540-1¼ 451 (500-1¼)	560-1¼ 471 (500-1¼)	560-1½ 471 (500-1½)	640-2 551 (600-2)

006° to RW36

REIL Rwy 18, 32 and 36
HIRL Rwy 18-36 and 14-32

SC-4, 25 FEB 2021 to 25 MAR 2021

SC-4, 25 FEB 2021 to 25 MAR 2021