

WAAS CH 69408 W34A	APP CRS 342°	Rwy Idg 5498 TDZE 299 Apt Elev 300
--	------------------------	---

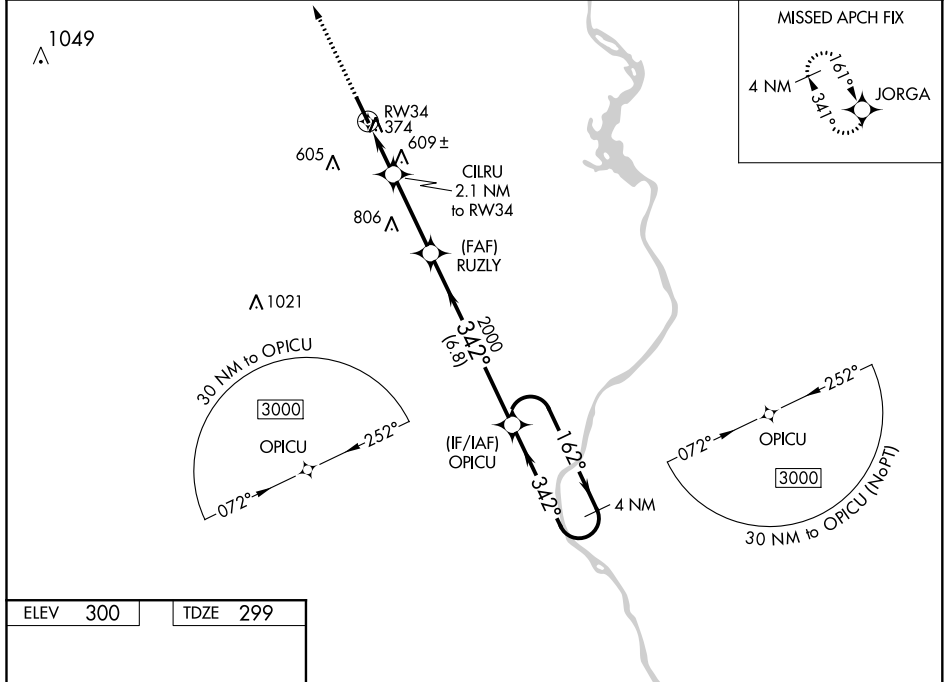
RNAV (GPS) RWY 34

ANSON COUNTY-JEFF CLOUD FIELD (A/F/P)

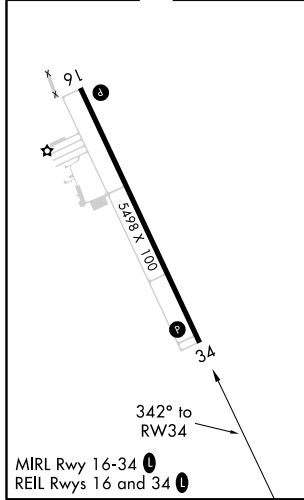
⚠ When VGSI inop, Circling Rwy 16 NA at night. Baro-VNAV NA when using Rockingham altimeter setting. For uncompensated Baro-VNAV systems, LNAV/VNAV NA below -15°C (5°F) or above 42°C (107°F). DME/DME RNP-0.3 NA. When local altimeter setting not received, use Rockingham altimeter setting: increase LPV DA to 598 and LPV all Cats visibility 1/8 mile; increase LNAV/VNAV DA to 1005 and LNAV/VNAV all Cats visibility 1/4 mile; increase all MDA 60 feet and LNAV Cats C/D and Circling Cat C visibility 1/8 mile.

MISSED APPROACH:
Climb to 3000 direct JORGA and hold.

AWOS-3 119,325	CHARLOTTE APP CON 120.05 307.8	UNICOM 122.8 (CTAF) 0
--------------------------	--	---------------------------------



ELEV 300	TDZE 299
----------	----------



3000	JORGA	VGSI and RNAV glidepath not coincident (VGSI Angle 3.00/TCH 45).	4 NM	
			OPICU Holding Pattern	
*LNAV only	CILRU 2.1 NM to RW34	RUZLY 2000	162° → 3000	
			← 342°	
			GP 3.00° TCH 42	
CATEGORY	A	B	C	D
LPV DA	549-7/8		250 (300-7/8)	
LNAV/VNAV DA	956-2 1/4		657 (700-2 1/4)	
LNAV MDA	860-1	561 (600-1)	860-1 1/2	561 (600-1 1/2)
CIRCLING	860-1	560 (600-1)	880-1 1/2	980-2 1/4
			580 (600-1 1/2)	680 (700-2 1/4)

SE-2, 25 FEB 2021 to 25 MAR 2021

SE-2, 25 FEB 2021 to 25 MAR 2021