

ALLEGHENY NINE DEPARTURE

**TOP ALTITUDE:
3000**

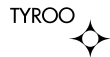
ATIS
120.55
GND CON
121.7
ALLEGHENY TOWER
121.1 239.0
PITTSBURGH DEP CON
119.35 285.575 337.4

BRIGGS
112.4 BSV :--:
Chan 71
N40°44.44'-W81°25.93'
L-29, H-10

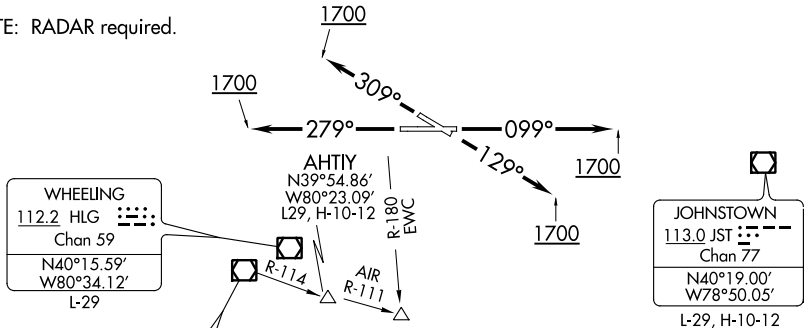
AKRON
114.4 ACO :--:
Chan 91
N41°06.47'
W81°12.09'
L-30, H-10

FRANKLIN
109.6 FKL :--:
N41°26.31'
W79°51.40'
L-30, H-10

ELLWOOD CITY
115.8 EWC :--:
Chan 105
N40°49.50'-W80°12.69'
L-29, H-10



NOTE: RADAR required.



WHEELING
112.2 HLG :--:
Chan 59
N40°15.59'
W80°34.12'
L-29

BELLAIRE
117.1 AIR :--:
Chan 118
N40°01.02'
W80°49.03'
L-29, H-10-12

KEMAN
N39°51.63'
W80°02.50'
H-10-12

JOHNSTOWN
113.0 JST :--:
Chan 77
N40°19.00'
W78°50.05'
L-29, H-10-12

TAKEOFF MINIMUMS
Rwys 10, 28, 31: Standard.
Rwy 13: Standard with minimum
climb of 205' per NM to 1800.

PARKERSBURG
108.6 JPU :--:
Chan 23
N39°26.47'-W81°22.49'
L-29, H-10-12

MORGANTOWN
111.6 MGW :--:
Chan 53
N39°33.40'-W79°51.62'
L-29, H-10-12

ELKINS
114.2 EKN :--:
Chan 89
N38°54.87'-W80°05.96'
L-29, H-10-12

DEPARTURE ROUTE DESCRIPTION

TAKEOFF RUNWAY 10: Climb heading 099° until 1700 thence....

TAKEOFF RUNWAY 13: Climb heading 129° until 1700 thence....

TAKEOFF RUNWAY 28: Climb heading 279° until 1700 thence....

TAKEOFF RUNWAY 31: Climb heading 309° until 1700 thence....

....expect vectors to assigned route/fix. Maintain 3000. Expect further clearance to requested altitude 10 minutes after departure.

NOTE: Chart not to scale.

ALLEGHENY NINE DEPARTURE

NE-4, 25 FEB 2021 to 25 MAR 2021

NE-4, 25 FEB 2021 to 25 MAR 2021