

WAAS CH 65625 W28A	APP CRS 279°	Rwy ldg TDZE 1251 Apt Elev 1252	6501
--	------------------------	---	-------------

RNAV (GPS) RWY 28

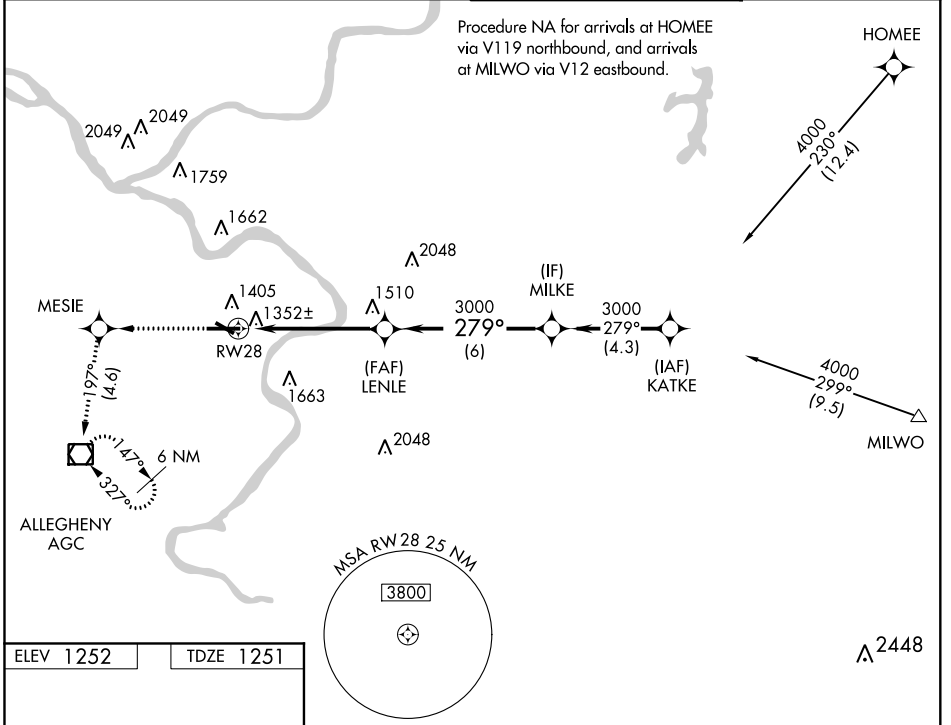
ALLEGHENY COUNTY (AGC)

Baro-VNAV NA below -17°C (2°F).
DME/DME RNP-0.3 NA.
For inoperative MALSRS, increase LPV visibility to RVR 5000 all Cats.

MALSRS

MISSED APPROACH: Climb to 3000 direct MESIE and via 197° track to AGC VOR/DME and hold.

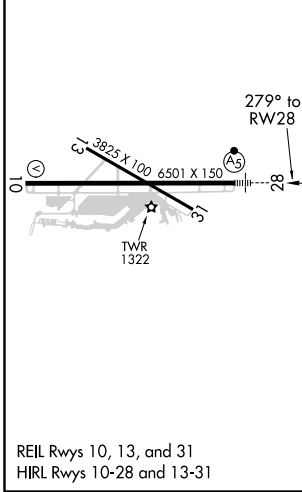
ATIS 120.55	PITTSBURGH APP CON 119.35 285.575	ALLEGHENY TOWER 121.1 239.0	GND CON 121.7
-----------------------	---	---------------------------------------	-------------------------



NE-4, 25 FEB 2021 to 25 MAR 2021

NE-4, 25 FEB 2021 to 25 MAR 2021

ELEV 1252	TDZE 1251
-----------	-----------



3000	MESIE	tr 197°	AGC	LENLE	MILKE	Procedure Turn NA
3000				3000	3000	GP 3.00° TCH 51
				*1.3 NM to RWY 28		
				*LNAV only.		
				-1.3	4 NM	6 NM
CATEGORY	A	B	C	D		
LPV DA		1563/24	312 (400-½)			
LNAV/VNAV DA		1625/40	374 (400-¾)			
LNAV MDA	1700/24	449 (500-½)	1700/40 449 (500-¾)	1700/50 449 (500-1)		
CIRCLING	1720-1¼	468 (500-1¼)	1980-2 728 (800-2)	1980-2¼ 728 (800-2¼)		