

WAAS CH <b>53334</b> <b>W09A</b>	APP CRS <b>090°</b>	Rwy Idg TDZE <b>1478</b> Apt Elev <b>1478</b>
--	------------------------	---

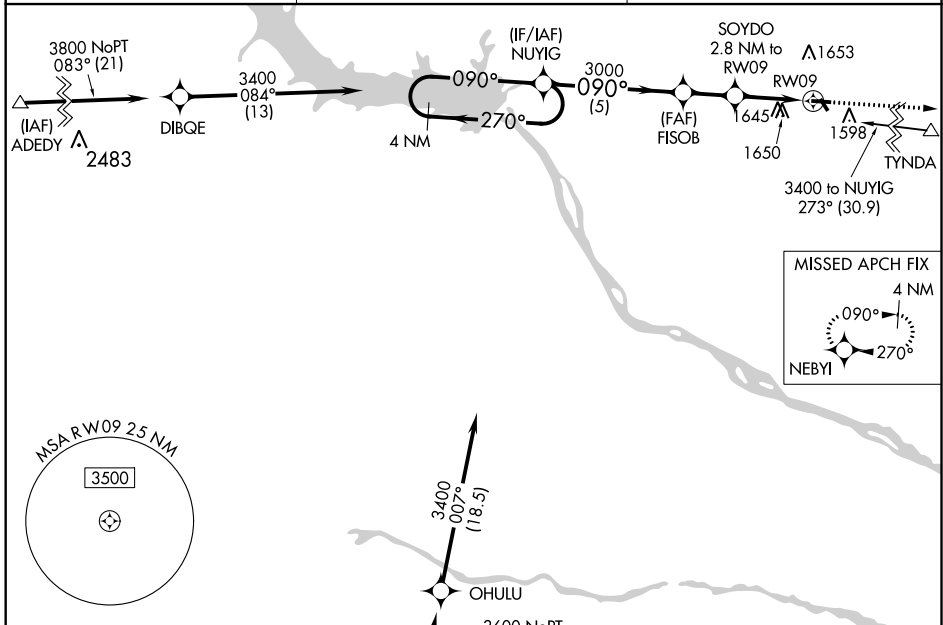
# RNAV (GPS) RWY 9

WAGNER MUNI (AGZ)

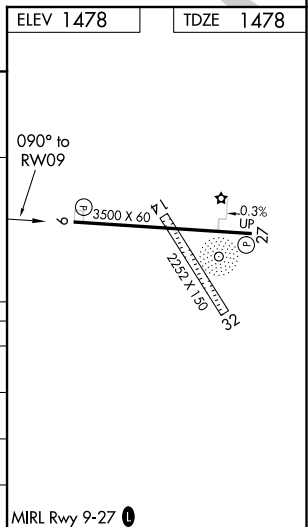
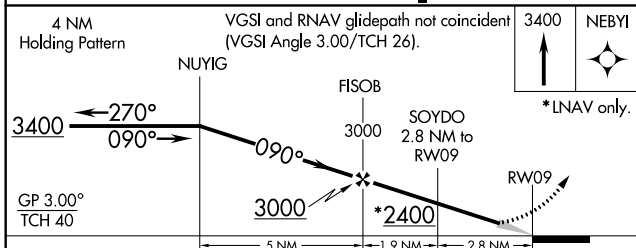
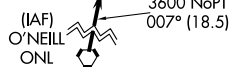
**NA** Circling NA to Rwy's 14 and 32. Baro-VNAV NA. DME/DME RNP-0.3 NA. Use Yankton altimeter setting; when not received use O'Neill altimeter setting and increase all DA 51 feet, all MDA 60 feet and increase LPV all Cats visibility ½ mile, and LNAV/VNAV all Cats visibility ½ mile.

MISSED APPROACH: Climb to 3400 direct NEBYI and hold.

YKN AWOS-3PT <b>119.05</b>	MINNEAPOLIS CENTER <b>128.0 257.95</b>	AUNICOM <b>122.8</b> (CTAF) <b>1</b>
-------------------------------	---	---



Procedure NA for arrivals on ONL VORTAC airway radials 055 CW 083.



CATEGORY	A	B	C	D
LPV DA	1847-1¼	369 (400-1¼)		NA
LNAV/VNAV DA	2053-2	575 (600-2)		NA
LNAV MDA	2020-1	542 (600-1)		NA
<b>C</b> CIRCLING	2080-1	602 (700-1)		NA

NC-1, 25 FEB 2021 to 25 MAR 2021

NC-1, 25 FEB 2021 to 25 MAR 2021