

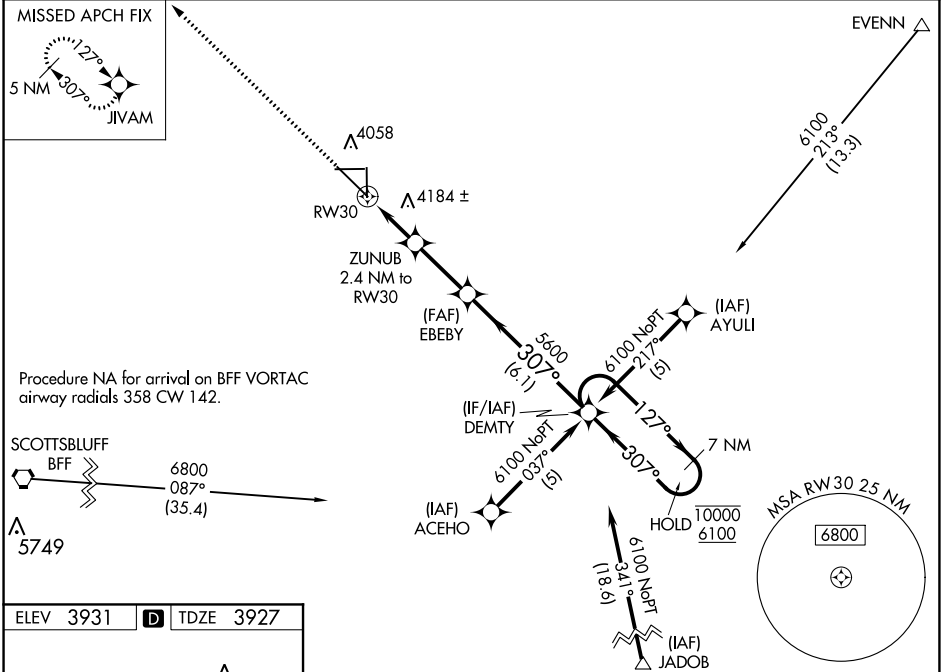
WAAS CH <b>82102</b> <b>W30A</b>	APP CRS <b>307°</b>	Rwy Idg <b>9202</b> TDZE <b>3927</b> Apt Elev <b>3931</b>
--	------------------------	---

# RNAV (GPS) RWY 30

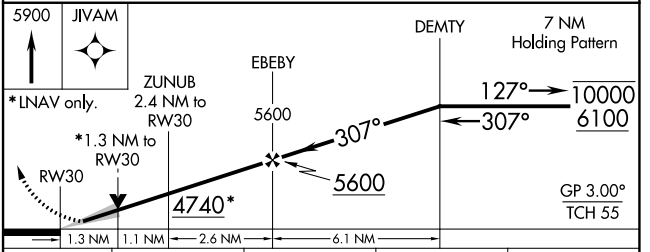
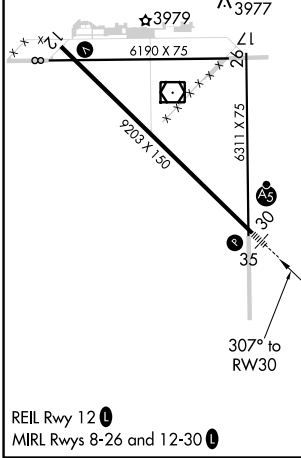
ALLIANCE MUNI (AIA)

RNP APCH.	MALSR 	MISSED APPROACH: Climb to 5900 direct JIVAM and hold.
For uncompensated Baro-VNAV systems, LNAV/VNAV NA below -22°C or above 50°C. For inop ALS, increase LNAV/VNAV visibility all Cats to 7/8 SM and LNAV/VNAV Cats C/D visibility to 1 3/8 SM.		

ASOS <b>135.075</b>	DENVER CENTER <b>127.95 338.2</b>	UNICOM <b>123.0 (CTAF) 0</b>
------------------------	--------------------------------------	---------------------------------



ELEV 3931	<b>D</b>	TDZE 3927
-----------	----------	-----------



	A	B	C	D
CATEGORY				
LPV DA		4127-1/2	200 (200-1/2)	
LNAV/VNAV DA		4221-1/2	294 (300-1/2)	
LNAV MDA	4400-1/2	473 (500-1/2)	4400-1	473 (500-1)
CIRCLING	4400-1 469 (500-1)	4500-1 569 (600-1)	4520-1 1/2 589 (600-1 1/2)	4520-2 589 (600-2)

NC-2, 25 FEB 2021 to 25 MAR 2021

NC-2, 25 FEB 2021 to 25 MAR 2021