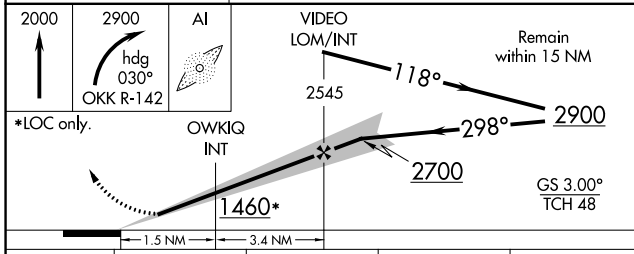
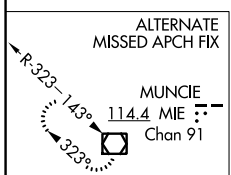
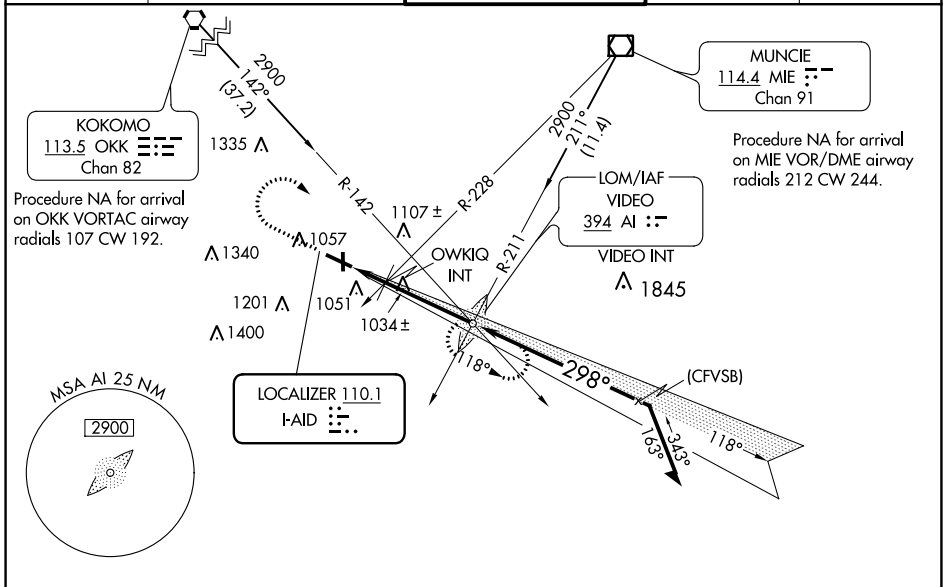


LOC I-AID 110.1	APP CRS 298°	Rwy Idg TDZE Apt Elev	5320 919 919
---------------------------	------------------------	-----------------------------	---

ILS or LOC RWY 30

ANDERSON MUNI-DARLINGTON FIELD (AID)

	Rwy 30 helicopter visibility reduction below 3/4 SM NA.		MISSED APPROACH: Climb to 2000 then climbing right turn to 2900 heading 030° and OKK VORTAC R-142 to VIDEO LOM and hold.	
			AWOS-3 128.55	INDIANAPOLIS APP CON 120.65 317.8



ELEV 919	TDZE 919
REIL Rwy 12 MIRL Rwys 12-30 and 18-36 FAF to MAP 4.9 NM	
Knots	60 90 120 150 180
Min:Sec	4:54 3:16 2:27 1:58 1:38

CATEGORY	A	B	C	D
S-ILS 30	1209-3/4 290 (300-3/4)			
S-LOC 30	1360-3/4 441 (500-3/4)	1360-1 441 (500-1)		
CIRCLING	1360-1 441 (500-1)	1400-1 481 (500-1)	1520-1 3/4 601 (700-1 3/4)	1520-2 601 (700-2)

EC-2, 25 FEB 2021 to 25 MAR 2021

EC-2, 25 FEB 2021 to 25 MAR 2021