

RNAV (GPS) RWY 20

ATLANTIC MUNI (AIO)

WAAS CH 82528 W20A	APP CRS 198°	Rwy Idg TDZE Apt Elev	5000 1151 1165
--	------------------------	-----------------------------	---

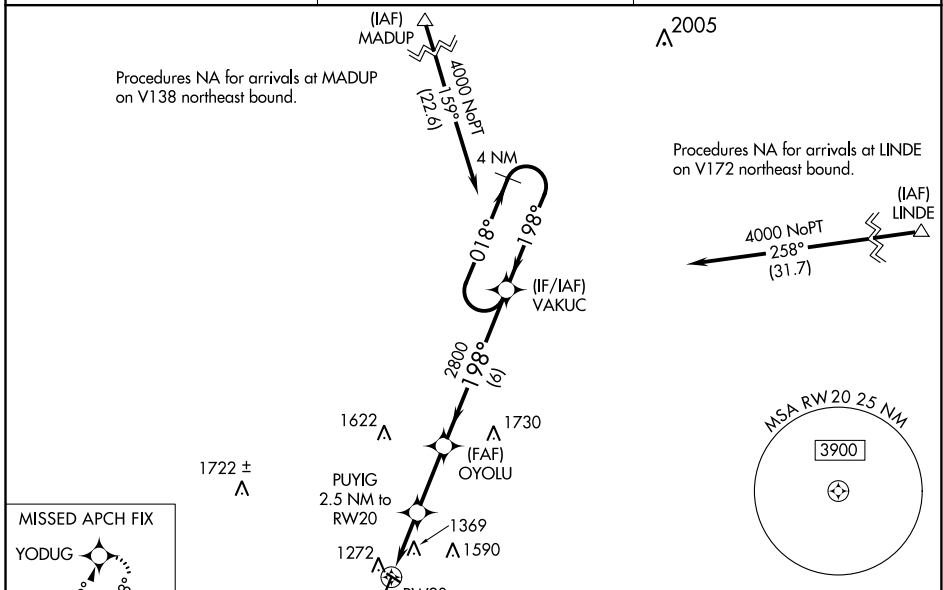
▽ DME/DME RNP -0.3 NA. Baro-VNAV and VDP NA when using Harlan altimeter setting.
▲ For uncompensated Baro-VNAV systems, LNAV/VNAV NA below -17°C (2°F) or above 54°C (130°F). When local altimeter setting not received, use Harlan altimeter setting: increase LPV DA to 1496 feet, LNAV/VNAV DA to 1780 feet, and all MDA 60 feet; increase LPV all Cats visibility 1/2 SM, LNAV/VNAV all Cats visibility 1/2 SM, LNAV Cat C visibility 1/4 SM, and increase circling Cat C visibility 1/4 SM. Circling Rwy 12, 30 NA at night.

MISSED APPROACH:
 Climb to 4000 direct YODUG and hold.

AWOS-3
127.825

MINNEAPOLIS CENTER
119.6 290.4

UNICOM
122.7 (CTAF)



4000 YODUG VGSI and RNAV glidepath not coincident. (VGSI Angle 3.00/TCH 31).

PUYIG 2.5 NM to RW20

OYOLU 2800

VAKUC 4 NM Holding Pattern

*LNAV only

*1.6 NM to RW20

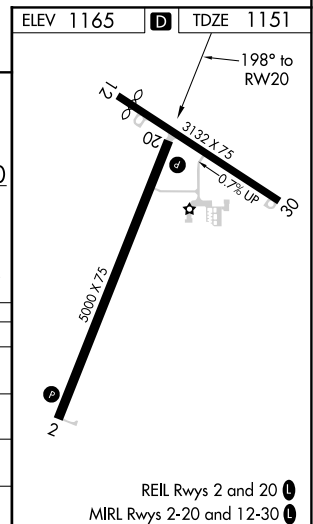
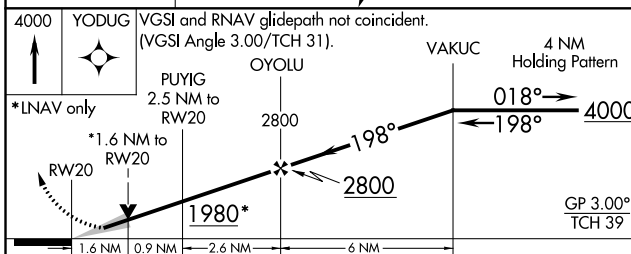
1980*

198°

2800

4000

GP 3.00° TCH 39



CATEGORY	A	B	C	D
LPV DA	1447-1 296 (300-1)			NA
LNAV/VNAV DA	1733-2 582 (600-2)			NA
LNAV MDA	1680-1 529 (600-1)	1680-1½ 529 (600-1½)		NA
CIRCLING	1760-1 595 (600-1)	1780-1¾ 615 (700-1¾)		NA

NC-3, 25 FEB 2021 to 25 MAR 2021

NC-3, 25 FEB 2021 to 25 MAR 2021