

WAAS CH <b>49121</b> W24A	APP CRS <b>242°</b>	Rwy Idg TDZE <b>5503</b> <b>1448</b>	Apt Elev <b>1448</b>
---------------------------------	------------------------	--	-------------------------

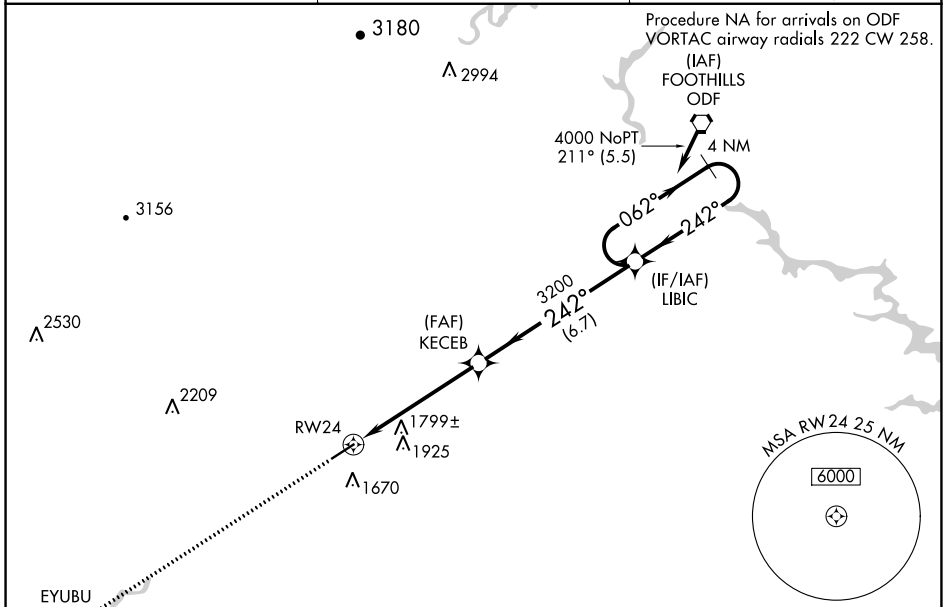
# RNAV (GPS) RWY 24

HABERSHAM COUNTY (AJR)

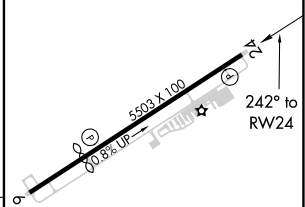
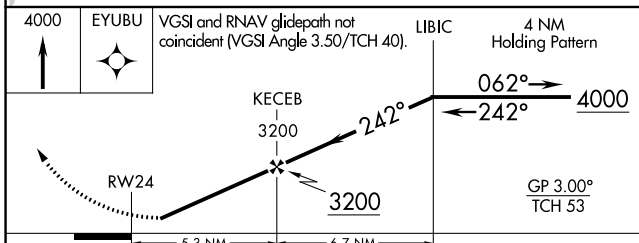
**▼** DME/DME RNP-0.3 NA. Rwy 24 helicopter visibility reduction below 1 SM NA. When local altimeter setting not received use Gainesville altimeter setting and increase all DA 69 feet and all MDA 80 feet: increase visibility LPV and LNAV/VNAV all Cats ¼ mile, LNAV Cat C and D ½ mile, Circling Cat C and D ¼ mile. When VGSI inop, Straight-in/Circling Rwy 24 procedure NA at night. Baro-VNAV NA when using Gainesville altimeter setting. For uncompensated Baro-VNAV systems, LNAV/VNAV NA below -17°C (2°F) or above 34°C (93°F).

**▲ NA** MISSED APPROACH: Climb to 4000 direct EYUBU and hold.

AWOS-3 <b>119.175</b>	ATLANTA CENTER <b>134.8 379.95</b>	UNICOM <b>122.7 (CTAF) 0</b>
--------------------------	---------------------------------------	---------------------------------



ELEV 1448	TDZE 1448
-----------	-----------



CATEGORY	A	B	C	D
LPV DA		1852-1 <sup>3</sup> / <sub>8</sub>	404 (500-1 <sup>3</sup> / <sub>8</sub> )	
LNAV/VNAV DA		2154-2 <sup>1</sup> / <sub>2</sub>	706 (800-2 <sup>1</sup> / <sub>2</sub> )	
LNAV MDA	2060-1	612 (700-1)	2060-1 <sup>3</sup> / <sub>4</sub>	612 (700-1 <sup>3</sup> / <sub>4</sub> )
CIRCLING	2060-1 612 (700-1)	2100-1 652 (700-1)	2100-1 <sup>3</sup> / <sub>4</sub> 652 (700-1 <sup>3</sup> / <sub>4</sub> )	2240-2 <sup>1</sup> / <sub>2</sub> 792 (800-2 <sup>1</sup> / <sub>2</sub> )

MIRL Rwy 6-24 0

SE-4, 25 FEB 2021 to 25 MAR 2021

SE-4, 25 FEB 2021 to 25 MAR 2021