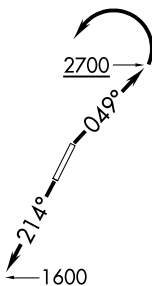


# BEAVY FIVE DEPARTURE (RNAV)

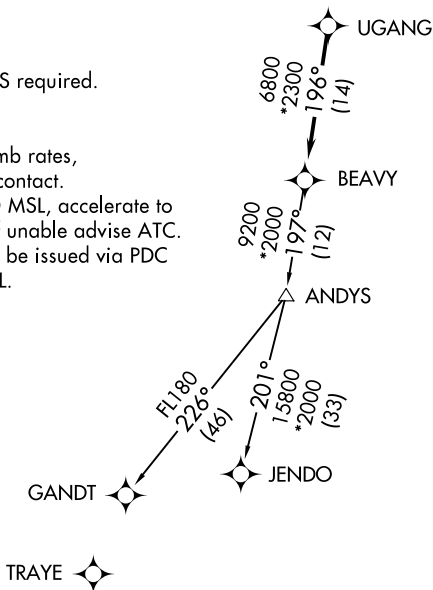
ASOS  
135.725  
CLNC DEL  
127.2  
UNICOM (CTAF)  
123.0  
CHARLOTTE DEP CON  
120.05 257.2

**TOP ALTITUDE:  
3000**



TAKEOFF MINIMUMS  
Rwys 3, 21: Standard.

- NOTE: For turbojets only.
- NOTE: DME/DME/IRU or GPS required.
- NOTE: RNAV 1.
- NOTE: RADAR required.
- NOTE: If unable to accept climb rates, advise ATC on initial contact.
- NOTE: Upon reaching 10000 MSL, accelerate to and maintain 280K, if unable advise ATC.
- NOTE: Transponder code will be issued via PDC or Charlotte CLNC DEL.



NOTE: Chart not to scale.

## DEPARTURE ROUTE DESCRIPTION

TAKEOFF RWY 3: Climb heading 049° to 2700 before turning left.  
TAKEOFF RWY 21: Climb heading 214° to 1600 before proceeding north.

Climb on heading assigned by ATC, expect RADAR vectors to UGANG, then on track 196° to BEAVY. Then on assigned transition. Maintain 3000, expect clearance to filed altitude within 10 minutes after departure.

GANDT TRANSITION (BEAVY5.GANDT)  
JENDO TRANSITION (BEAVY5.JENDO)

# BEAVY FIVE DEPARTURE (RNAV)

SE-2, 25 FEB 2021 to 25 MAR 2021

SE-2, 25 FEB 2021 to 25 MAR 2021