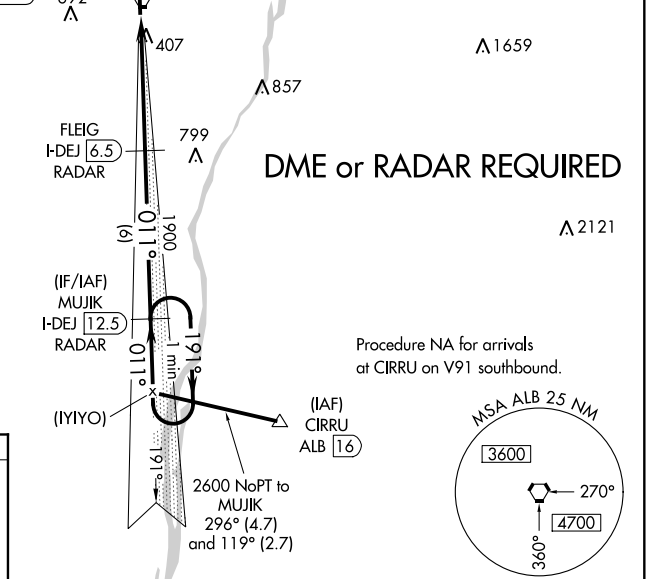
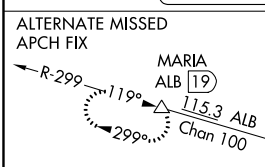
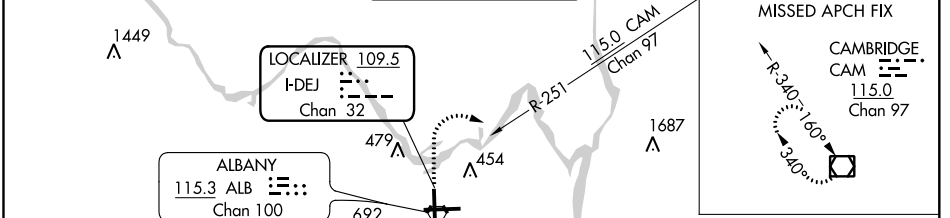


LOC/DME I-DEJ 109.5 Chan 32	APP CRS 011°	Rwy Idg TDZE Apt Elev	8500 284 285
--	------------------------	-----------------------------	---

ILS RWY 1 (SA CAT II)
ALBANY INTL (ALB)

DME or RADAR required. Reduced Lighting: Requires specific OPSPEC, MSPEC, or LOA approval and use of autoland or HUD to touchdown.	MALSR	MISSED APPROACH: Climb to 800 then climbing right turn to 5000 and on CAM VOR/DME R-251 to CAM VOR/DME and hold.
--	-------	--

D-ATIS 120.45	ALBANY APP CON 132.825 307.2	ALBANY TOWER 119.5 257.8	GND CON 121.7 348.6	CLNC DEL 127.50
-------------------------	--	------------------------------------	-------------------------------	---------------------------



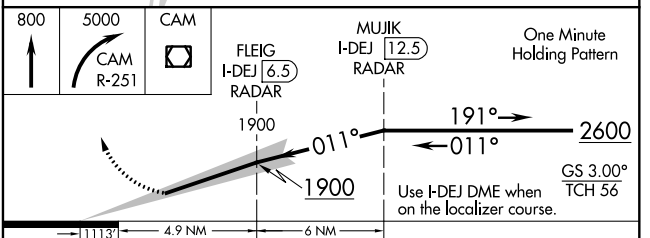
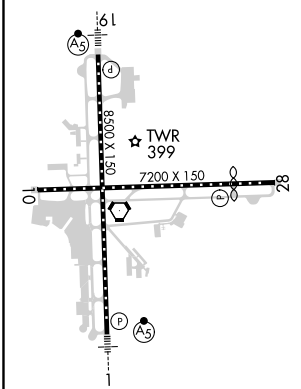
DME or RADAR REQUIRED

Procedure NA for arrivals at CIRRU on V91 southbound.

NE-2, 25 FEB 2021 to 25 MAR 2021

NE-2, 25 FEB 2021 to 25 MAR 2021

ELEV 285	D	TDZE 284
----------	----------	----------



CATEGORY	A	B	C	D
S-ILS 1	RA 100/12 100 DA 384			

SA CATEGORY II ILS - SPECIAL AIRCREW & AIRCRAFT CERTIFICATION REQUIRED